

GREAT CHART WITH SINGLETON PARISH COUNCIL



In This Newsletter

Latest on

- 2024-25 Budget
- 2024 Events
- 2024 Meeting Dates and Venues
- 2023 In Review

- Updates from Clubs and Groups
- Useful Contact Info
- Reporting information

DATES FOR YOUR DIARY

- Council meeting dates
 - 12th February
 - 11th March
 - 15th April
- Pop Up Cafe
 - 14th February
 - 13th March
 - 17th April



INSIDE THIS EDITION



Parish Council Meeting Dates 2024	Page 3
Thoughts from the Chairman	Page 4
Parish Council News, Projects & Events	Pages 5 - 8
Budget 2024-25	Page 9
2023 In Review	Pages 10 - 11
Singleton Environment Centre	Page 12
Singleton Community Fridge	Page 13
Advertisements	Page 14
Reporting - what? who to? and how?	Page 15
Local Amenities	Page 16
Group Reports	Pages 17 - 20
Useful Information	Pages 21 - 22
Councillor Contact Details	Pages 23 - 24

Keep In Touch



www.greatchartsingleton-pc.gov.uk



[greatchartwithsingletonparishcouncil](https://www.facebook.com/greatchartwithsingletonparishcouncil)



[gcwspc](https://www.instagram.com/gcwspc)



theclerk@greatchartsingleton-pc.gov.uk

01233 616923

Photo Credits

Page 1 - Sweet Chestnut by Caroline Brookshaw-Robinson.
All other photos are either council's own or provided with the relevant article

Newsletter Advertising and Articles

This newsletter is produced by Great Chart with Singleton Parish Council and is distributed to every house within the Parish and also included on our website and social media pages.

We welcome submissions for articles and events from local clubs, groups and businesses that benefit those living within our parish.

Any views or opinions included in this newsletter are solely those of the authors and do not necessarily represent those of the Parish Council.

We are able to offer advertising and sponsorship opportunities for local businesses.

Please contact the Clerk using the contact details above for more information.



PARISH COUNCIL MEETINGS 2024



The Parish Council meets on the 2nd Monday of the month at 7:30pm to discuss local issues and to make decisions. The meeting venue alternates between Singleton Village Hall, Great Chart Village Hall and the new Chilmington Cabin within the Hodsons part of the development. The dates and venues for 2024 are confirmed below, why not come along to a meeting to find out more about the Parish Council's activities, and have your say. For more information on agendas and minutes please visit our website

www.greatchartsingleton-pc.gov.uk and click on The Council tab

The dates for 2024 meetings are:

15th January 2024 - Singleton Village Hall

12th February 2024 - Great Chart Village Hall

11th March 2024 - Chilmington Cabin

15th April 2024 - Great Chart Village Hall

13th May 2024 - Singleton Village Hall

20th May 2024 - Singleton Village Hall

10th June 2024 - Chilmington Cabin

8th July 2024 - Singleton Village Hall

9th September 2024 - Great Chart Village Hall

14th October 2024 - Chilmington Cabin

11th November 2024 - Great Chart Village Hall

9th December - Singleton Village Hall

If between planned meetings an urgent issue arises, an Extraordinary Meeting can be called. These are announced at least three days in advance and are publicised on our website and social media.



THOUGHTS FROM THE CHAIRMAN



HAPPY NEW YEAR!

By the time this copy of the parish magazine reaches you, we will be a few weeks into 2024, so first let me wish you all a very Happy New Year! I hope it's a good one for everybody.

There are two particular issues the council is trying to resolve currently: the access to Chilmington Green Primary School and the abysmal traffic situation in The Street in Great Chart and along the Great Chart bypass.

I'm delighted to see that Kent County Council (KCC) is finally taking some action to try and improve the situation with access to Chilmington Primary School. Closing part of the road to traffic while repairs are carried out to what is a dreadful road surface, should at least make the road a little safer, but there is still some way to go to provide safe *pedestrian* access from the Singleton side of the parish.

The Parish Council has been trying to resolve this issue with Kent County Council for many months, and a record of our correspondence can be found at

www.greatchartsingleton-pc.gov.uk/VirDir/CoreContents/News/Display.aspx?id=60093

The Street has been an issue for many years, worsened recently by traffic from the increasing number of occupied properties on the new Chilmington development, and the failure of KCC to dual the A28 between the 'Matalan' and 'Tank' roundabouts. There is a 'trigger' point at 400 occupations where the developer is obliged by their S106 agreement with Ashford Borough Council (ABC) to provide funding towards the roads' construction, with the balance coming from KCC/Central Government. As you are all aware, there was a 'false start' a couple of years ago where preparatory work was stopped when it became apparent that funding would not materialise to allow work to be completed.

Specific plans to try and improve the local situation in The Street are being developed, currently. We will keep you informed, but in the meantime you can view the complete Highways Improvement Plan for the parish at www.greatchartsingleton-pc.gov.uk/VirDir/CoreContents/News/Display.aspx?id=66776

Our first full parish council meeting this year will take place on Monday 15th January in Singleton Village Hall, with the second one taking place on Monday 12th February in Great Chart Village Hall. The meetings will, as usual, cover several topics of interest to parishioners. There is an opportunity to speak on any subject you choose, and fellow councillors are always interested in your views. Why not come along and see us in action and get involved in local decision making? The list of meetings scheduled for 2024 is on page three.

Malcolm Wiffen

Great Chart with Singleton Parish Council Chairman



Parish Council News &

Projects & Events

2024

Hello and welcome to our first newsletter of 2024. This edition is full of information on what we have planned for the next year. We have a number of events scheduled, both big and small, see pages 6 and 7 for more information on those, and we hope to see as many of you as possible whilst we are out and about in the area.

Although the next financial year doesn't start until April, the preparation work for the budget started in September 2023 and so the amount we will request for our precept has already been decided. See page 9 for more information on that.

And to see out 2023, pages 10 and 11 are dedicated to a photo review of some of the things we achieved in the last 12 months.

With the start of a new year comes ideas for change. As the Chilmington development grows, so does the population of our parish. In the future, Chilmington may become a parish council in its own right, but for a while yet the houses and residents will fall under this parish.

And I think we can all agree that Great Chart with Singleton and Chilmington Parish Council isn't exactly a short and snappy name. But how can we make it shorter, whilst keeping an identity relevant to the area we cover? Please email theclerk@greatchartsingleton-pc.gov.uk if you have any ideas or thoughts.



**GREAT CHART
with SINGLETON**
Parish Council

NEWSLETTER ISSUE 16 2024

**GREAT CHART
WITH SINGLETON
PARISH COUNCIL**

In This Newsletter

- Latest on
- 2024/25 Budget
- 2024 Events
- 2024 Meeting Dates and Venues
- 2023 In Review

• Updates from Clubs and Groups

• Useful Contact Info

• Reporting Information

DATES FOR YOUR DIARY

- Council meeting dates
 - 12th February
 - 11th March
 - 15th April
- Pop Up Cafe
 - 14th February
 - 13th March
 - 17th April

Following on from thinking about the name of the Parish Council, we have also been thinking about the name of our newsletter. Do you know what a Parish Council is? What we do? What we don't do? Do you read this newsletter cover to cover? Do you pick it up and throw it in the recycling? Do you skim the bits relevant to you without really thinking about who produces it and why? Although our social media presence is growing, our newsletter is a way of reaching every resident within our boundary as it is posted through every letterbox. This is particularly important to those moving into the area as with increased engagement comes better feedback on what we can do to serve all residents, not just those who follow our social media. Again, please email theclerk@greatchartsingleton-pc.gov.uk with any thoughts or ideas you may have on how to improve our publication and our communication in general.



Although there is generally less work to be done outside by the Stewards over Winter, there is still a lot of maintenance work to be done. Trimming, clearing and repairing work is always needed. There was also a tree planting day back in November for the Community Orchard, which should hopefully provide naturally grown fruit for residents in a year or two's time.



Parish Council News, Projects & Events

Our 2024 events programme is ready to go! There will no doubt be a few more events added as we go through the year, but this is what we have planned so far.



Colour Run 2024 - Sunday 23rd June This event was such fun to organise and take part in, we are doing it again - but better!



Big Lunch 2024 - Saturday 13th July Our annual village fete event will be held on the Great Chart Playing Fields for the third year running. Please get in touch with paula.cowperthwaite@greatchartsingleton-pc.gov.uk if you are interested in volunteering, selling, performing or taking part in any way. The more the merrier!

JANUARY
Council Meeting: 15th
Pop Up Cafe: 17th

LILY'S SINGLETON
WARM ROOM

Running throughout winter

FEBRUARY
Council Meeting: 12th
Pop Up Cafe: 14th

Craft In The Cafe
Valentine Style
14 February

MARCH
Council Meeting: 11th
Pop Up Cafe: 13th

Photo Competition:
Showcase your
Historic Photos

APRIL
Council Meeting: 15th
Pop Up Cafe: 17th

Saturday 13th April
Come along to our
free BBQ and help us
create our poppy
project for D-Day

MAY
Council Meeting: 13th
Pop Up Cafe: 15th

Annual Meeting of
Electors
Monday 20th May

JUNE
Council Meeting: 10th
Pop Up Cafe: 12th

D-Day 80th
Anniversary
Event 6th June

Colour Run
23rd June

JULY
Council Meeting: 8th
Pop Up Cafe: 10th

BIG LUNCH 2024
Saturday 13th July

AUGUST
Council Meeting:
No Meeting
Pop Up Cafe: 14th

Craft In The Cafe
Summer Style
14 August

SEPTEMBER
Council Meeting: 9th
Pop Up Cafe: 11th

Photo Competition:
Take a selfie in a recognisable
part of the parish

OCTOBER
Council Meeting: 14th
Pop Up Cafe: 16th

Craft In The Cafe
Halloween Style
31st October

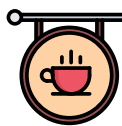
NOVEMBER
Council Meeting: 11th
Pop Up Cafe: 13th

Photo Competition:
Caption Our Picture

DECEMBER
Council Meeting: 9th
Pop Up Cafe: 11th

Christmas Movie:
Details TBC

Parish Council News, Projects & Events



Pop Up Cafe

and Information Hub

Upcoming 2024 Dates

17th January	Singleton Village Hall 10-12pm
14th February	Singleton Village Hall 10-12pm Great Chart Village Hall 2-4pm
13th March	Singleton Village Hall 10-12pm
17th April	Singleton Village Hall 10-12pm Great Chart Village Hall 2-4pm
15th May	Singleton Village Hall 10-12pm
12th June	Singleton Village Hall 10-12pm Great Chart Village Hall 2-4pm
10th July	Singleton Village Hall 10-12pm
14th August	Singleton Village Hall 10-12pm Great Chart Village Hall 2-4pm
11th September	Singleton Village Hall 10-12pm
16th October	Singleton Village Hall 10-12pm Great Chart Village Hall 2-4pm
13th November	Singleton Village Hall 10-12pm
11th December	Singleton Village Hall 10-12pm Great Chart Village Hall 2-4pm

Our Pop Up Cafe and Information Hub is having a little shake up for 2024. We will now run every month from Lily's Cafe in Singleton Village Hall. The time will always be 10-12 on the Wednesday after the Council meeting. We will run in Great Chart on alternative months between 2pm and 4pm. We also hope to run in Chilmington at the new Cabin at some point in 2024 but we will announce this once we have confirmation that it can happen. Each session will still have the same warm welcome, the free hot drinks, cake and chat, but we will also be bringing along some craft activities, board games and our public access laptops for those who don't have the ability to access the internet at home.



D Day 80th Anniversary Poppy Craft



Join us on Saturday 13th April for a special D Day 80th Anniversary craft session at Singleton Village Hall where we will be constructing a giant poppy from a number of smaller poppies. There will be other craft activities and a free BBQ available as well. More details will be released nearer the time so keep an eye on our communication channels.

Great Chart with Singleton Parish Council will join with Kingsnorth Parish Council at Kestrel Park on 6th June to commemorate the 80th anniversary. More details in our next newsletter.

Craft in the Cafe

Our Craft in the Cafe sessions are still proving to be popular. Thanks to a generous donation from a disbanded Youth Club, we have a big supply of craft kits and equipment to continue to run these events throughout 2024. Our first Craft in the Cafe will run as part of the February Pop Up Cafe on 14th February and will be all things Love. We will also host a summery session during August and as Halloween will fall during the October half term we will be getting our spooky crafts out again.



Parish Council News, Projects & Events

Residents Survey

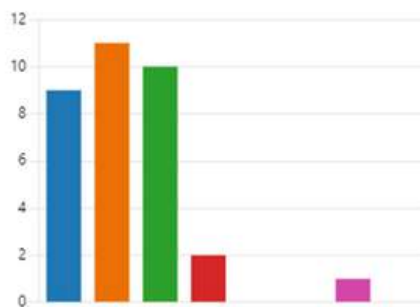
Throughout November, the parish council ran a residents survey. Although the percentage of responses was low, the information that was gathered was informative and thought provoking, so if you filled the survey out, thank you for your contribution, you really can make a difference with your comments.

The things people liked most about living in the area were the green spaces, local amenities and the feeling of safety within the area. The council works hard to improve the green spaces we have the authority to make changes on, and we do everything we can to promote advice on how stay safe and help to prevent crime.

The things that were not so popular were the parking problems and anti-social behaviour in certain areas. Again, we work closely with the local police to report anti-social behaviour where we are aware of it, and although we object to planning applications that will cause parking problems, and request residents be courteous of neighbours when parking, there is very little we can actually influence or enforce.



● Newsletter	9
● Email	11
● Social Media	10
● Noticeboard	2
● Phone	0
● Nextdoor	0
● Face to face	1
● Other	0



Social media and our quarterly newsletter remain residents favourite way to keep up to date with what the parish council are doing, although there were a number of requests for a regular email update - is this something you would be interested in? We want to reach as many residents as we can in the most cost effective and timely manner possible. If you would like to join a mailing list, or have any

other ideas about our communication channels, please contact us via email, our website contact form, social media, phone call or drop into the parish office. Contact details for the parish staff and councillors are at the end of this newsletter.

And although our influence in the local area is limited in terms of the powers we have to make changes to assets and services we don't own, where we can, we will. So we will look into suggestions for improvements to be made to the basketball court at Cuckoo Park, and we will continue to improve on our litter picking and graffiti removal services. We will continue to review and provide the low cost events that we already host, but which continue to be requested, praised and well attended.

We will also see what we can do about the spa suggestion, but we make no promises...



BUDGET 2024-25



Although the 2024-25 financial year doesn't start until April, the work to determine what the Parish Council will spend starts in September of the previous year.

Taking existing spending, and factoring in any changes in legislation, project plans and feedback from residents, a forecast is drawn up by the Clerk of what the projected spending will be. This is then discussed in detail at a Finance Committee meeting in October and brought to the Full Council meeting for all councillors to discuss in November. If changes are suggested, the updated budget is then presented to the December meeting for final approval.

The final figure is then requested from Ashford Borough Council. This is known as the precept and forms part of your council tax bill. The parish council portion in 2023-24 was approximately 3p out of every £1. For more information on how your Council Tax is calculated, please visit www.ashford.gov.uk/council-tax/council-tax-information

The image below shows the headlines from the Parish budget for next year, with a full breakdown available at www.greatchartsingleton-pc.gov.uk/Finance_30637.aspx

The precept is the annual amount requested each year, and collected for the Parish Council by Ashford Borough Council. This year's increase will equate to a rise of £12.06 for a Band D household.

Precept

£380,411 ↑
up by
£53.9K



The Parish Council is keen to do what we can in our corner of the world to help save it, but this type of work is also regularly requested by residents. So we have created a separate budget line to provide funding for additional environmental projects.

Environment Projects



£3.5K
new budget line

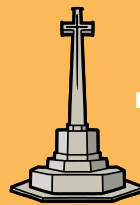
Play Park Reserves



33K
↑ up by
£6.3K

This amount is 'reserved' each year to reduce the need to increase precepts when work is needed. Recent replacements and upgrades at Cuckoo Park cost over £80K and was taken out of this pot of money without it significantly affecting the precept amount

War Memorial



£2K
new budget line

At a recent meeting, the parish council agreed to take over responsibility for the Great Chart War Memorial. This will ensure the continuity of care will remain in place for as long as the parish council continues to exist.

A new budget line has been introduced to fund street furniture around the parish.

This will include more benches and small amenities to improve the area - do you have any suggestions?

Capital Purchase

£25K
new budget line



Last year the council didn't allocate an amount for grants as previous year underspends were adding up. However, we are pleased that we have now helped a number of local groups and we need to top the fund back up. Get in touch if you would like to apply.

Parish Grants



£20K

Events



£7.5K
up by ↑
£2.5K

As in previous years, the feedback on our events has been very positive, with requests for more of them. So we have increased our budget again as we feel bringing the community together is worth spending the money on.

Stronger Communities



£10K
down by ↓
£8K

The Stronger Communities budget started in 2023 when Singleton Community Fridge was launched. Although the fridge will continue, and new projects will also start, the main set up costs have been met and a smaller ongoing budget is needed.



2023 IN REVIEW



2023 IN REVIEW



SINGLETON ENVIRONMENT CENTRE

Great Chart with Singleton Parish Council have continued to support the educational events at Singleton Environment Centre. With their generous support the centre has been able to run several fun learning opportunities for families and young people at a reasonable price that has been praised by attendees as being "great value for money".

In the October half term we celebrated Halloween at Singleton Environment Centre with our Sensational Spiders event. Over 80 children, with their families, learnt facts about spiders and how amazing they are as well as their fascinating anatomy. Everyone put their learning to good use to make their own pet spider to take home. There was more environmental learning whilst the children completed a 'Gruesome Nature' trail around the centre grounds and enjoyed learning lots of nature facts to make us go "urgh"! There was lots of amazement as the children made some potions that magically changed colour and boiled and bubbled. We ended our Halloween themed sessions by toasting marshmallows over the firepit before receiving a trick or treat gift.

This December there was lots of festive fun at the centre with over 100 children attending our North Pole School. There were lessons in Geography, Science, Art, PE, Food Technology and Literacy!

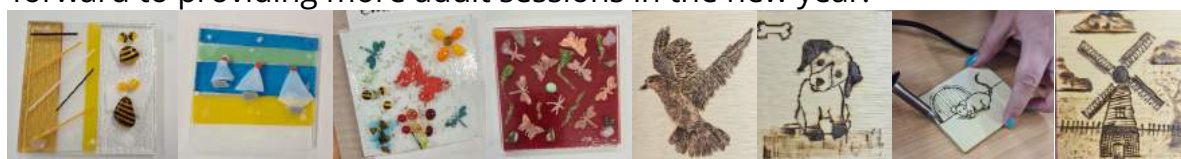
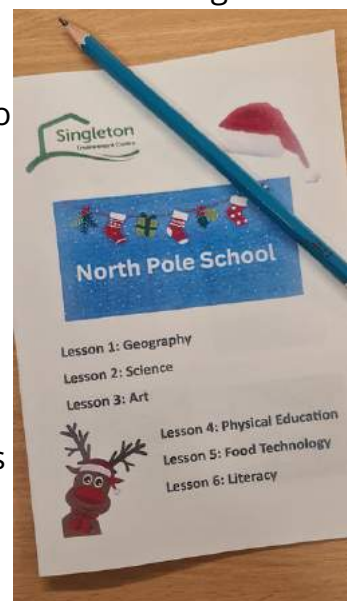


During this family session we learnt about life in the North Pole and the animals that live in this special environment with Santa. After learning how global warming is melting the ice and snow in the North Pole we all made some snow for Santa in our two snow experiments. The swirling snowstorm in a cup was beautiful to watch and the powder snow was great fun to play with. We all got creative and decorated two wooden tree decorations to take home. Then the children searched the centre grounds to find the festive symbols before decorating some gingerbread men which got eaten rather quickly! Whilst making a Christmas wish we were all amazed by the magical appearance of Santa who read us a story before handing out gifts to all the good boys and girls.



The fun hasn't been just for the children. There has been the opportunity for adults to learn a new craft skill at the centre with two more events in the 'Prosecco with' series. At the start of October, some amazing glass coasters and sun catchers were designed and created during the Fused Glass event. At the end of October, our participants

learnt how to burn beautiful designs onto wood at our Pyrography session. The attending adults on both events picked up lots of tips and tricks to achieve great results. The Prosecco with series has been extremely popular and the centre looks forward to providing more adult sessions in the new year.



Singleton Environment Centre would like to thank Great Chart with Singleton Parish Council for their kind support throughout 2023 and we look forward to more fun educational events for families, children and adults in 2024.





COMMUNITY FRIDGE



The community fridge project is still going strong within Singleton Village Hall (in the entrance hall, on the same side as Lily's Cafe). In the last issue, and on social media, we put out a volunteer call as we needed more help to continue to run the project. Thankfully this call was answered and we now have a reliable team of volunteers to make sure we can continue to run day to day.

However, we always welcome new volunteers, as the current ones will have days they can't attend, so if you are interested in helping us out - either regularly or on an ad hoc basis, please don't hesitate to get in touch as we can always find a task that needs completing. We also have plans to expand our reach and you may be able to help out there - see below for more details.



📣 Can You Help? 📣

Our community fridge project is running well, but there is still more we can do to combat food waste and help to feed local residents. We have a core team of volunteers that help to run the project on a daily basis but there is more we can do outside of this to improve our offering.

- We currently rely heavily on Fareshare deliveries - and although these deliveries are significantly discounted, there is a still a cost that the Parish Council meet each month.

Do you own, or have contact with, a business that has food waste on a regular basis? Please get in touch with us as we can arrange to pick this food up and put it into the fridge. There are some requirements of the business in terms of labelling, but once in our hands, we take full responsibility from that point on.

- Promotion - are you a pro at designing leaflets or social media content? Maybe you are a student looking to build a design portfolio? We would love a volunteer to join the team to help us create shareable content that can be used in print and online to promote our mission of reducing food waste. We are happy to sign off volunteer hours for qualifications.
- Grant writing - is this something you do in your day job? Maybe finding funding pots and answering the right questions comes naturally to you? Would you be able to help us access funding via grants rather than tax funds?
- Deep cleaners - every couple of weeks we like to empty everything and give all the storage boxes and equipment a good clean. If you can't commit to a regular time slot, maybe this is a task for you?

If you are interested in volunteering, either regularly or for a short period of time, then please contact paula.cowperthwaite@greatchartsingleton-pc.gov.uk for more information. An induction and appropriate hygiene training will be given where needed.



REPORTING



In the complex web of local authorities and different agencies, it is often difficult to know who to report a problem to. We have put together the list below, which may look long, but covers the vast majority of issues. It is important that any issues you see are reported to the correct organisation so the problem can be dealt with quickly and efficiently.

Kent County Council

To report any emergency issues call **03000 414141** (Monday – Friday, 9am to 5pm), and **03000 419191** outside office hours, or go to www.kent.gov.uk/roads-and-travel/report-a-problem

- Street light faults
- Potholes
- Traffic signal faults
- Overgrown vegetation (including hedges and grass)
- Drainage
- Flooding

Contacting Kent Police

Report a non-urgent crime online

www.kent.police.uk/report

Talk to the Police on LiveChat-available 24/7

www.kent.police.uk/contact

In an emergency, if the crime is in progress or life is in danger call **999**

If deaf or speech impaired, text 'police' and your message to **60066**

Great Chart with Singleton Parish Council

For issues relating to any of the areas below, please email the Parish Office at TheClerk@greatchartsingleton-pc.gov.uk

- Cuckoo Park (opposite John Wesley School)
- Great Chart Playing Fields (the area with the park and outdoor gym)
- The Viewing Point and the path running alongside Singleton Village Hall
- Dog poo bag dispensers
- The raised flowerbed at the bottom of Singleton Hill

Ashford Borough Council

For issues relating to any of the following, please go to www.ashford.gov.uk and click on Report, or call

01233 331111

ENVIRONMENTAL ISSUES

- Abandoned trolleys
- Abandoned Vehicles
- Allotment issue
- Bonfires
- Fly-tipping
- Light Nuisance
- Noise Nuisance
- Odour
- Overgrown Borders/Shrubs/Hedges or Grass Trees

HOUSING

- Squatters and unauthorised occupants
- Repairs
- Tenancy Fraud

COMMUNITY

- Anti-Social Behaviour
- Public Toilets and community toilet scheme issue

ANIMAL ISSUES

- Dog fouling
- Lost or stolen dogs
- Stray dogs
- Dead animals

STREETS

- Illegal street trading
- Street cleansing, graffiti, vandalism or litter
- Overgrown Borders/Shrubs/Hedges or grass
- Overflowing/damaged litter bin

BINS

- Assisted collections
- Missed collections
- Replace, lost or broken bin
- Discarded syringes
- Litter/dog bin issue

FOOD AND HYGIENE ISSUES

- Suspected food poisoning
- Poor hygiene practices
- Problem with a food product

PLANNING AND BUILDING CONTROL

- Dangerous structure
- Fly-posting
- Planning breach



LILY'S AT SINGLETON



BASED IN
SINGLETON
VILLAGE HALL
OFFERING
EMPLOYMENT
OPPORTUNITIES
TO THOSE WITH
AUTISM &
LEARNING
DISABILITIES

CAKE, HOT DRINKS &
SANDWICHES
TAKEAWAY AVAILABLE
FREE WIFI

Lily's
SOCIAL KITCHEN



Lemon Tea Reflexology

The perfect way to relax,
rebalance & recharge.

Gift Vouchers Available

Full member of the AoR
Elizabeth Langley MAR

01233 510952
lizzy@lemontearflexology.com
Lemontearflexology.com

**hobbs
parker**

Uncomplicated,
trustworthy and
confidential
advice if you are
selling or letting

Ashford: 01233 506260 Tenterden: 01580 766766

www.hobbsparker.co.uk

LOCAL AMENITIES



The Great Chart with Singleton Parish is well provisioned with local halls, all open for booking for local groups and events.

SINGLETON VILLAGE HALL



The Hall consists of the existing building which has 1 large Main Hall (approx. 140 people seated) and 1 small side room. There are kitchen & WC facilities including disabled.

The new building has the Extension Hall downstairs (approx. 60 people seated) with a fully fitted kitchen & WC facilities including disabled.

On the first floor is the Extension Hall upstairs is of a similar size (approx. 60 people seated) but can be divided off into two halls (approx. 30 people each) with a soundproof partition wall. This is accessed via a wide staircase or a lift for those with mobility issues. There are WC facilities and a small tea/coffee making room with a sink.

To book at Singleton Village Hall please contact the Bookings Secretary on bookings@singletonvh.co.uk 07887 575647 or visit www.singletonvillagehall.co.uk

GREAT CHART PLAYING FIELDS AND BUxFORD PAVILION

The Great Chart Playing Fields are currently hosting Pilgrims Football Club for the 2023/24 season, and will be the venue for the Parish Council's Big Lunch and Colour Run in 2024.

For those not aware, the facilities at Great Chart Playing Fields are:

- the main Buxford room with adjacent kitchen and access to a small outside area to the rear of the building - ideal for meetings or birthday parties
- two lots of changing rooms with showers in each - ideal if you want to host a sporting event or exercise class
- the playing fields themselves - although activities are restricted in the larger field to preserve the pitches for Pilgrims FC, please contact chair@greatchartplayingfields.org.uk if you wish to enquire about your events suitability.



GREAT CHART VILLAGE HALL

Great Chart Village Hall, which has looked over the village of Great Chart since 1908, is now fully reopened to its regular user groups and event hires. It is the venue for the parish councils Pop Up Cafe on the second Wednesday of the month, and every other month it also hosts the Parish Council meeting, but is also a favourite with a number of other clubs and groups. The hall has a Facebook page at <https://www.facebook.com/Great-Chart-Village-Hall-134684416590425> and bookings can be made on 01233 610173.



GROUP REPORTS



If you run a not-for-profit community group within the parish and would like to contribute an article for the newsletter, please email paula.cowperthwaite@greatchartsingleton-pc.gov.uk

HILLCREST ALLOTMENTS

WELCOMING THE RAIN

For the past eight years, the parish allotments at Great Chart have helped residents reap very real environmental benefits from growing their own fruit and veg locally. Sadly, our local water company cynically quoted a totally unaffordable £30,000 to extend pipe work just 25 metres to the entrance of the site, effectively leaving the allotments without mains water. Had it not been for the generosity of others, plot holders would therefore have had to rely on the rain to ensure their plants survived.

The parish council kindly stepped in to fund construction of the original false roof above the on site equipment storage container, allowing falling rain to be channelled into one of four IBC storage tanks provided at zero cost by Judges Self Storage.

However, with a now expanded allotment site, that roof needed replacing with something larger. The £7,071 cost of doing so was well beyond the financial means of the allotment association (Barrow & Spade Brigade), which therefore sought funding from the Kent Community Foundation's Amity Allotment Fund. This provided a grant of £5,000. A further £1,500 came from the parish council. Plot holders, themselves, provided the balance. The excellent work carried out by Goody Timber Buildings (<https://goodytimberbuildings.co.uk/>) has helped significantly expand the previous water capture surface area.

Dan Jenner, the allotment committee's chairman, somehow persuaded Etils Ltd (<httpwww.etills.com>) to provide a 7,000-litre water tank totally free of charge. Its arrival has allowed the previous eight IBCs used to store water to be cascaded around the site and each will eventually have its own mini-water capture system fashioned from wood recovered from the original container roof. The allotment's 15,000-litre total capacity should therefore go some way towards overcoming the inevitable summer droughts.

The plot holders are extremely grateful to all who have helped make these projects a success.

Plots costing either £32.50 or £22.50 per annum do become available on a regular basis. Contact parish clerk Ani Szocs at theclerk@greatchartsingleton-pc.gov.uk



GROUP REPORTS



1ST SINGLETON SCOUTS GROUP

We've been busy with a range of activities and visits since returning after the summer holidays. In October, our Beavers, Cubs and Scouts came together to learn about Lion Aid and then fundraised nearly £500 for the cause, with the Beavers completing a sponsored silence and the Cubs a sponsored walk and cake sale.

Our Beavers have been working on several badges including their book reader and skills badge. They had a fun evening learning about pirates, which included making a treasure map.

Our Cubs have been learning about safety, leading to them gaining the Duke of Cornwall Home Safety award. We were lucky to be gifted equipment from the Lawn Tennis Association which allowed the Cubs to have an introduction to tennis.

Our Scouts ventured out on a night hike that was organised for all Scouts across the district and both our teams did very well. They enjoyed a trip to forest school to enjoy archery and axe throwing. They've learnt practical skills such as first aid and sewing.



Trips out have included a visit to Willesborough Windmill, a guided walk around Ashford Community Woodland, Remembrance service at Singleton Community Church and a fun night bowling. We've also been lucky to have been visited by the RNLI to talk about water safety.

We have a small number of spaces for children to join the group. And we'd always welcome adult leaders to join us too. If you have a special hobby or interest and would like to come and talk to the group to help them earn a badge, please do get in touch.



1ST GREAT CHART SCOUTS GROUP

We have had a very busy term and the Cubs have achieved several activity badges including Disability Awareness, Global Issues and Environmental Conservation. To fulfil one of the requirements of the Environmental Conservation badge the Cubs ran an anti-litter campaign, making posters to encourage people not to drop litter, which you can see around the parish on various noticeboards.

The Cubs also achieved their Air Activities Stage 1 badge. One of the activities they most enjoyed was making paper aeroplanes and seeing whose flew the furthest.

We have twice visited Lower Grange Farm, once for a nerf guns session and once to do fencing. We also attended the local pantomime performed by the Singleton Dreamdragons.

As part of the World Challenge Award the Cubs learnt about, and celebrated Diwali. They also painted and decorated Diwali tealight holders.

One of the definite highlights of the term was a visit to Victoria Park where the Cubs picked apples at the community orchard and used a press to make apple juice, followed by a singsong around an imaginary campfire.

On 12th November we took part in the annual Remembrance Parade and church service in Great Chart. In preparation for this, the Cubs did a 1940s war-time evening, looking at badges Scouts could earn during the war and sending coded messages to each other for deciphering.

We finished the term with a Christmas party with traditional party games.

Our pack is currently full but we do operate a waiting list, so please do contact us if your child is interested in joining.

Finally, we would like to say a massive 'Thank you' to the trustees of the Great Chart Village Hall and to an anonymous donor for the new noticeboard, flagpole and flag they have provided for us. Such support and generosity are much appreciated.

Sally Gathern - Akela, 1st Great Chart Cubs



GROUP REPORTS



SINGLETON COMMUNITY CHURCH

We launched with our new signage and new name of Singleton Community Church less than one year ago and what a year of adventure and growth we had in 2023. Growing numbers with many children and youth, and growing connections in our community. Last year we embraced our first Baptism in a paddling pool and welcomed the 1st Repton and 1st Singleton Scouting group with 120 visitors on Remembrance Sunday. What will 2024 hold?!



We are very friendly, all ages and stages and all are welcome to join us on the adventure. One of our new endeavours is 'Singleton Friendship'. Sharon, our lead volunteer explains more;

A very warm welcome awaits all who would like to join us at the newly formed Singleton Friendship group. We are a group of people from Singleton Community Church who would like to offer care and friendship to those in our community who would appreciate more social interaction with others. We meet in Lily's Social Café in Singleton Village Hall on Tuesday mornings from 10am-12pm (during term time).

Generally, it's in the workplace that most people spend time with others during the week, but if you are a parent at home raising kids, a retired person, or a person who lives alone, it's not always easy to find places to be with others. If you feel you'd like more company and connection, we are here for you. We'll buy you a cuppa, and we can have a good chat. If you like games and puzzles we have those on offer too and if you'd like to bring your own arts and crafts along we'd be very interested to see what you're creating, maybe you could teach us a thing or two!

So please come and join us, we would love to meet you.



GREAT CHART WI

Great Chart & Godinton WI have had another successful and interesting year ending 2023 with several new members having joined during the past few months.

Our committee expanded to eleven members and has been very productive arranging many and varied activities and speakers, in particular getting to grips with using modern technology with microphones, projectors and even involvement with Zoom meetings that has increased the subject matter that we can experience going into the new year.

As mentioned in previous reports we held two very successful events involving the 'Sewing Bee' contestant and the local Nepalese community.

Two of our members enjoyed a craft/activity stay at a Devon hotel organised by the East Kent WI Federation at the beginning of September which was excellent sampling many and varied crafts together with a very amusing time playing 'Adventure Golf' on a very hot & sunny afternoon but we did wear our sunhats !!.....We also had fun experiencing ten pin bowling one evening once the functioning of the system was repaired which was interesting.

We ended our craft sessions in December by holding a Christmas wreath making evening which produced some beautiful results. We also hope to continue our Knit & Natter afternoons on the 4th Monday afternoon of the month at the 'New Chimneys' pub for which we thank the Landlord for making us so welcome.

We have lots of ideas and plans as we head into 2024 so if you are interested in joining us, we meet on the 3rd Wednesday of the month at Godinton Village Hall at 7.30pm where we would love to welcome both visitors and new members.

Find us on Facebook – Great Chart & Godinton Women's Institute. Or for more information email:

secretary@greatchartgodintonwi.uk or president@greatchartgodintonwi.uk



GROUP REPORTS



TABLE TENNIS CLUB



If you are interested in table tennis and would love to come along to our new group, you are very welcome. All levels are more than welcome from beginners to intermediate. All bats and balls will be provided, and coaching is available if you want some hints and tips. We are based in Singleton Village Hall, Monday evenings between 7pm and 10pm. £4 per person.

For more information please call or text Jenny on 07941 653003. Hope to see you there, all ages welcome.

NEIGHBOURHOOD WATCH

Although space is precious, I would be failing if I did not thank Great Chart with Singleton Parish council for this publication which reaches many residents who do not have other communication means to get crime prevention advice to them and keep them safe.

Going forwards into 2024 the crime risks will be the same. Scams will get better and more sophisticated and there are scams for anything and everything. We must take our time and do nothing in a rush.

The next crimes sadly are below but many are AVOIDABLE and PREVENTABLE Buildings at risk will be sheds, garages, barns, stables, and any form of external storage, they must be made as secure as possible.

Residents with newer premises that only have car ports must be even more careful and not store items on show with such open and easy access.

Vans with tools left inside overnight are at risk. Please park as safe and secure as

you can. Leave nothing whatsoever inside a vehicle on show when parking. Stand for 10 seconds and look

inside when you leave the vehicle. Can you see anything? If you can so can a criminal and you can become a victim of crime. Why do people leave cash, wallets, credit cards, handbags, mobile phones in cars? Isolated cars parks in rural areas and railway station car parks present a crime opportunity.

Trend crimes are,

Theft of number plates, please always report.

Theft of internet shopping from doorsteps, vans are now followed.

Anti-Social behaviour and Criminal damage always please report.

The police are not clairvoyant! They must be told it is the only way we can offer crime prevention and plan proactive patrols if we know the extent of the problem.

Neighbourhood Watch is vital to try and support the community to stay crime free and keep residents free from the fear also of being the victims.

Contact me on peternew1@aol.com to join its completely free, you just read stay safe.

Thank you, Peter New



Peter New
peternew1@aol.com
07768437422

Office of the Kent Police and Crime Commissioner's posts

Office of the Kent Police and Crime Commissioner
4 h · 🌐

Always great to meet Neighbourhood Watch Network and Peter New. Thank you for coming to see us, but also thank you to the Neighbourhood Watch members who help keep our streets safe in #kent and #medway. 🙏



USEFUL INFORMATION



VENUE CONTACT DETAILS

Singleton Village Hall	Tel: 07887 575647 Email: bookings@singletonvh.co.uk
Great Chart Village Hall	Tel: 01233 610173 Email: greatchartvillagehall@yahoo.co.uk
Great Chart Playing Fields Buxford Pavilion	Tel: 01233 427407 Email: bookings@greatchartplayingfields.org.uk
Singleton Environment Centre	Tel: 01233 343885 Email: centremanager@singletonenvironmentcentre.org.uk

EMERGENCY CONTACT DETAILS

William Harvey Hospital 01233 633331	Kent Highways Service 03000 418181
Environment Agency 03708 506 506	Environment Incident Reporting 0800 80 70 60
South East Water 0333 000 0001	Floodline 0345 988 1188
UK Powernet 0800 029 4285	Power Cut 0800 31 63 105
Samaritans 116 123 email jo@samaritans.org	Kent County Council - Enquiries - Social Services 03000 41 41 41
Emergency Services 999 Press 55 on a mobile if unsafe to speak Text 60066 if deaf/hard of hearing	Kent Police - non emergency numbers Call 101 or use Live Chat at www.kent.police.uk Call 111 for medical non-emergencies

OTHER INFO

Allotments	Contact the Parish Clerk on 01233 616923 theclerk@greatchartsingleton-pc.gov.uk
Dog Warden Colin Leek	Tel: 01233 330340 Email: colin.leek@ashford.gov.uk
Mobile Library	Aske's Court: Friday 14:55-15:25 Meridian Court: Friday 15:45-16:15 Coronation Drive: Saturday: 10:55-11:25



CLUBS AND GROUPS



1st Great Chart Scouts Group - Contact Dave or Sally Gathern 01233 633966
Beavers (6-8.yo) - Friday 5-6:30pm
Cubs - (8-10.5yo) - Friday 6:30-8pm

1st Singleton Scouts Group - Contact Jill Lane 01233 641773/ 07799 886549
Beavers (6-8yo) Wednesday 5:15-6:30pm
Cubs (8-10.5yo) Wednesday 6:30-8pm
Scouts (10.5-14yo) Friday 7-8:30pm

Great Chart & Godinton WI
Secretary Janet Goodwin: 01233 332510
Committee Member Pam Grigg: 01233 878013
19:30 on 3rd Wednesday of the month at Godinton Village Hall

Singleton WI
Meeting at Singleton Environment Centre on the first Thursday of the month. Contact Hannah on 07542 436522, singletonwiekf@gmail.com or @SingletonWI

Ashford Community Woodland
ashfordcommunitywoodland@hotmail.co.uk
www.ashfordcommunitywoodland.org

Repair Cafe Ashford
Email: ashfordrepaircafe@outlook.com
Every Wednesday 1pm- 4pm at Singleton Environment Centre

Ashford Volunteer Centre
Telephone: 01233 665535
Email: contact@ashfordvc.org.uk
Website: <https://ashfordvc.org.uk>

Speed Watch. Contact area co-ordinator Garry Perry 01233 640110 info@whp.co.uk

Pilgrims Football Club - Contact Kyran Wilford 07984 352008 kyran@pilgrimsfc.co.uk

Paek Ma Taekwondo - contact Master Geoff 6th Dan 07836 621060 at SVH.
Tuesday 5:30-6:30pm /6:30-8 Juniors and Seniors
Thursday 6:30-8pm Juniors

Dream Dragons Theatre - Wednesdays 7-10pm at SVH. Contact 01233 668767 or www.dreamdragons.co.uk

Stardust Studios - Children's dance classes at SVH. Contact Natalie Kitts 01233 625786/ 0984956 or info@starduststudios.co.uk

Flora the Singleton Giant.
Contact Peter 01233 610241
peter@singletongiant.org.uk

Great Chart Cricket Club
www.greatchartcc.co.uk

Ashford Concert Band. Thursdays 7-8:30pm at John Wesley School
www.ashfordconcertband.co.uk
info@ashfordconcertband.co.uk

Grace Fellowship at Singleton Road
www.gracefellowship.org.uk

Friends of Singleton Lake
Website: www.friendsofsingletonlake.co.uk

Local church Sunday services:
St Mary's Great Chart
Great Chart Church 10am
Singleton Community Church
Singleton Village Hall 11am.
Contact: 01233 620433
info@ashfordchurches.co.uk
www.ashfordchurches.co.uk

BOROUGH & COUNTY COUNCILLOR CONTACT INFORMATION

ASHFORD BOROUGH COUNCILLORS

Weald Central Ward Councillor:
Jessamy Blanford

Tel: 01233 840050
Email: jessamy.blanford@ashford.gov.uk

Singleton East Ward Councillor:
Bill Barrett

Tel: 07449 454044
Email: bill.barrett@ashford.gov.uk

Singleton West Ward Councillor:
Sally Gathern

Tel: 01233 633966
Email: sally.gathern@ashford.gov.uk

Washford Ward Councillor:
Clive Hallett

Tel: 07952 311440
Email: clive.hallett@ashford.gov.uk

KENT COUNTY COUNCILLORS

Councillor
Charlie Simkins

Tel: 01233 756705
Email: charlie.simkins@kent.gov.uk

Councillor
Dirk Ross

Tel: 07776 270416
Email: dirk.ross@kent.gov.uk

COUNCIL CONTACT DETAILS

Ashford Borough Council

Tel: 01233 331111
Web: www.ashford.gov.uk

Kent County Council

Tel: 03000 414141
Web: www.kent.gov.uk

PARISH COUNCIL STAFF

Parish Clerk
Aniko Szocs

Tel: 01233 616923 Mobile: 07354 472314
Email: theclerk@greatchartsingleton-pc.gov.uk

Deputy Clerk
Paula Cowperthwaite

Tel: 01233 616923 Mobile: 07354 472313 Email:
paula.cowperthwaite@greatchartsingleton-pc.gov.uk

Parish Steward
Vacant

Email: theclerk@greatchartsingleton-pc.gov.uk

Assistant Parish Steward
Robert Heath

Email: theclerk@greatchartsingleton-pc.gov.uk



PARISH COUNCILLOR CONTACT INFORMATION



CHILMINGTON GREEN WARD

Cllr Ian
McClintock

Tel: 07919 278828
Email: ian.mcclintock@greatchartsingleton-pc.gov.uk

GREAT CHART WITH SINGLETON NORTH WARD

Cllr Paul
Tate

Tel: 07850 082023
Email: paul.tate@greatchartsingleton-pc.gov.uk

SINGLETON EAST WARD

Cllr Steve
Herring

Tel: 01233 616923
Email: steve.herring@greatchartsingleton-pc.gov.uk

Cllr Janet
Sullivan

Tel: 01233 645400
Email: janet.sullivan@greatchartsingleton-pc.gov.uk

Cllr Malcolm
Wiffen

Tel: 01233 635016
Email: malcolm.wiffen@greatchartsingleton-pc.gov.uk

Cllr Dave
Gathern

Tel: 01233 633966
Email: dave.gathern@greatchartsingleton-pc.gov.uk

SINGLETON WEST WARD

Cllr Peter
Barker

Tel: 01233 610241
Email: peter.barker@greatchartsingleton-pc.gov.uk

Cllr Yolanda
Barker

Tel: 01233 610241
Email: yolanda.barker@greatchartsingleton-pc.gov.uk

Cllr Geoffrey
Darvill

Tel: 01233 642357
Email: geoffrey.darvill@greatchartsingleton-pc.gov.uk

Cllr Katrina
Alexander

Tel: 07791 632493
Email: katrina.alexander@greatchartsingleton-pc.gov.uk

WASHFORD WARD

Vacant

