

# GREAT CHART WITH SINGLETON PARISH COUNCIL



## In This Newsletter

- Parish Council News
- Meeting Dates and venues for 2022
- Reporting Guide

### Updates on

- Environmental Projects
- Improvement Works
- What to report, how and who to

### • Jubilee Event 18th June

- Updates from Clubs and Groups
- Useful Contact Info

## DATES FOR YOUR DIARY

- Council meeting dates
  - 13th June
  - 11th July
- Pop Up Cafe
  - 15th June
  - 13th July
  - 10th August



**Saturday 18 June 2022**  
**11-2:30pm**



**GREAT CHART**  
with **SINGLETON**  
Parish Council



# INSIDE THIS EDITION



<b>Parish Council News</b>	<b>Page 3</b>
<b>Parish Council Meeting Dates</b>	<b>Page 4</b>
<b>Thoughts From The Chairman</b>	<b>Page 5</b>
<b>Meet Your Councillor</b>	<b>Page 6</b>
<b>Big Jubilee Lunch Event</b>	<b>Page 7</b>
<b>You've Asked, We've Done</b>	<b>Page 8</b>
<b>Parish Council Projects</b>	<b>Page 9</b>
<b>Reporting - what? who to? and how?</b>	<b>Page 10</b>
<b>Singleton Environment Centre</b>	<b>Page 11</b>
<b>Local Environment</b>	<b>Page 11</b>
<b>Local Amenities</b>	<b>Page 12</b>
<b>Group Reports</b>	<b>Pages 13-15</b>
<b>Clubs, Groups, Information and Contacts</b>	<b>Pages 17-19</b>
<b>Big Jubilee Lunch poster</b>	<b>Page 20</b>

## Keep In Touch



[www.greatchartsingleton-pc.gov.uk](http://www.greatchartsingleton-pc.gov.uk)



greatchartwithsingletonparishcouncil



Gcwspc



GCwSPC



theclerk@greatchartsingleton-pc.gov.uk



01233 616923

## Photo Credits

Page 1 - Singleton Lake, Darren Raggett

All other photos are either council's own or provided with the relevant article

## Newsletter Advertising and Articles

This newsletter is produced by Great Chart with Singleton Parish Council and is distributed to every house within the Parish and also included on our website and social media pages.

We welcome submissions for articles and events from local clubs, groups and businesses that benefit those living within our parish.

Any views or opinions included in this newsletter are solely those of the authors and do not necessarily represent those of the Parish Council.

We are able to offer advertising and sponsorship opportunities for local businesses.

Please contact the Clerk using the contact details above for more information.





# PARISH COUNCIL NEWS



Welcome to the latest edition of our newsletter. A lot has happened in the parish since the last newsletter so hopefully you can make some time in your week to read through all the improvements that have taken place recently, and things still yet to happen.



One of the first things to mention in our newsletter is our upcoming Big Jubilee Lunch. This will be held on the Great Chart Playing Fields on 18th June 2022 and much more information can be found on page 7, the poster on the back page, or by following our QR code which will take you straight to our website. We really hope to see you there.



Since the last newsletter, and as COVID restrictions have lifted, we have held a number of community engagement events. We security marked 14 bikes at our bike marking session in February, and Peter New was on hand with Neighbourhood Watch advice. He was also at a joint event with the parish council, Ashford Borough Council and Kent Police to promote various safety initiatives and to give general advice.



We also hosted another one of our popular activity days at Singleton Environment Centre. This one was Easter themed and was on one of the sunniest days we have had this year. The turn out was very impressive and it was lovely to see so many visitors back in the grounds after the last two years. Flora the Singleton Giant watched over our craft table, and the number of toilet roll bird feeders that were made by the children mean the birds in the local area won't be going hungry any time soon! We



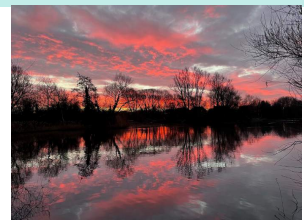
have a similar event planned during the August bank holiday weekend so keep an eye on our website.



Since our last newsletter was published, we have started to run the Pop Up Cafe at Askes Court in Singleton every other month. The cafe still every month, 11-1pm, at Great Chart Village Hall but it also now runs bi-monthly, 2-4pm, in the community room at Askes Court. Take a look on our social media and noticeboards for the dates and venues, and come

along for a chance to meet your neighbours, a cuppa and cake, and access to information from other helpful organisations across Ashford.

The parish council ran their first photo competition over the winter. The winner of the first competition was Darren Raggett with a colourful photo of Singleton Lake. The photo has been on display at Singleton Environment Centre but is due to be replaced shortly by the winner of the Spring competition (see social media for the winners announcement). The summer competition will open on 20th June.



A new initiative the parish council is hoping to grow in the area is a community garden. Work is underway to start the first project in Heron Walk, but if you know of somewhere that would be suitable in your area then please get in touch. The idea is that the parish council will help to set up a specific area of land in which local residents will come together to grow flowers, herbs or vegetables and to share in what is produced.

The parish council and Aspire have also agreed a pollinator friendly area along Pound Field walk. This area will be carefully managed to encourage pollinators where possible, without making the area look unsightly. Again if you are aware of areas that would be suitable for this project near you, please do contact us.



# PARISH COUNCIL MEETINGS 2022



The Parish Council meets on the 2nd Monday of the month to discuss local issues and to make decisions. The meeting venue alternates between Singleton Village Hall and Great Chart Village Hall. The dates and venues for the rest of 2022 are confirmed below, why not come along to a meeting to find out more about the Parish Council's activities, and have your say. For more information on agendas and minutes please visit our website

[www.greatchartsingleton-pc.gov.uk](http://www.greatchartsingleton-pc.gov.uk) and click on The Council tab

The remaining dates for 2022 meetings are:

**13th June 2022 - Great Chart Village Hall**

**11th July 2022 - Singleton Village Hall**

**12th September 2022 - Great Chart Village Hall**

**10th October 2022 - Singleton Village Hall**

**14th November 2022 - Great Chart Village Hall**

**12th December 2022 - Singleton Village Hall**

If between planned meetings an urgent issue arises, an Extraordinary Meeting can be called. These are announced at least three days in advance and are publicised on our website and social media.

## EVENTS 2022

The dates of all our parish council meetings, committee meetings, the Pop Up Cafe, special events and competitions can be found on our website under the Events tab  
[www.greatchartsingleton-pc.gov.uk/Events\\_31368.aspx](http://www.greatchartsingleton-pc.gov.uk/Events_31368.aspx)



# THOUGHTS FROM THE CHAIRMAN



Welcome to our second newsletter of 2022, as I write this on April 1st I am wondering if this is truly “fools day” as we have a blizzard here and I can't see my garden shed, so the forecast from Norway that was predicted has arrived!

It does seem to be a very strange world out there at the moment, I don't think anybody would have predicted that the global pandemic would still be affecting us after two years, but having just passed the 2nd anniversary of the first lock down, with many of my social media friends having the virus and I have just learnt my next door neighbour has it too – the idea that we no longer have to isolate seems very wrong to me – my mask and hand gel are still in my pocket and will be for a while – so please take care out there!

Of course the other huge news is the chaos (mild way of describing it) that is happening in Ukraine – the news programs are shocking to say the least! There is very little the PC can do to help or support the situation but I'm sure I speak for all of us when we wish the whole Country the best and hope for sense to prevail very soon.

Many of you will know that the PC has recently been replacing the gym kit at Cuckoo Park and adding a hard surface between the goals, all is going well OR IT WAS! It seems the fence protecting the works was broken into every night and the last weekend it was collapsed totally, whole families seem to have made use of the kit and surface before it was ready, but much worse than that some bright sparks decided to try to damage the new kit. I cannot say how angry and upset this makes me and all of the PC, we are spending nearly £80k on making this a better asset for our Parish and those locally, funded by the people of our Parish and yet before complete the new kit gets vandalised, I have no words to describe how I feel about this nicely! Now the good news is the work is nearly finished, we have one piece of kit still to arrive and TGO are going to fix an issue there is with the hard surface and the rubber surface under the gym kit – but hopefully this will be done very shortly, the pitch marked out and then later in the year we will have a grand opening, so watch this space.



Elsewhere, the PC has just funded the clearance of the area next to the Hillcrest Allotments to facilitate an extension to the plot the allotments occupy, the extra plots are needed as there have been 20 people on the waiting list for over 2 years – this added space will allow some of those patiently waiting to get a plot – there is a short drone film on our web site showing off how good the whole site looks since the clearance.

Nearer to the PC office we have also resurfaced the footpath we own as it has never had a really good hard surface put on it, so now it is much safer for everyone to use, especially as some parts of the path are not too well lit at night – but we may also have some solutions to this issue too!

On a personal note, I want to add my grateful thanks to Malcolm (our Vice-Chair) for stepping into my post so convincingly over recent months when I have not been firing on all cylinders, I know the PC is in great hands and although my return to full fitness is slow going, by taking small steps each week I am gradually on the mend – but I am sure it will be a while yet before all the sparks are working.

I know our Deputy Clerk (Paula) will be willing me to stop writing, but I must also thank our staff, the two Parish Stewards and our two Clerks, you might remember last year I was so pleased to announce that our Clerk (Aniko) had made the finals of the National Association of Local Council awards for Clerk of the year – the final 5 were listed and Ani was up against 4 Town Council Clerks, who obviously have the use of a greater number of staff and much more money to put on events etc, so Ani did not win – but I am still so proud that we have a Clerk of the Year finalist working for our Parish. Together with Paula we have a great team working so very hard for our parish, long may they continue to do so and the standard of the PC newsletter is just one small visual part of their work.

Please stay safe out there and keep up with your vaccinations and as I said earlier, I for one will continue taking as many precautions to ‘not catch’ the virus as is possible. Ian McClintock, Parish Council Chairman.





# MEET YOUR COUNCILLOR



Each newsletter we introduce you to one of the councillors that make up your Parish Council—you may well recognise their faces already. In this issue Peter Barker is answering your questions. He is councillor for the Singleton West Ward.

**1) What is your name and what roles do you hold in the Parish?**

Peter Barker, I sit on the full council as well as the finance committee, area and open spaces committee and our planning working group.

**2) Tell us a bit about yourself.**

I have been a Parish Councillor for over 12 years, I can't remember the exact length of time. I am self-employed giving me flexibility to help look after my wife and grandson when needed. A more unusual aspect of my life is Flora the Singleton Giant who I am the chairperson of.



**3) Why did you become a Councillor and what skills have you brought to the table?**

Why I became a councillor was because I was asked due to the need to fill seats between elections. I like to think I bring a level sensible head with my own views and opinions.

**4) What do you enjoy most about being a Councillor?**

This is a tough question as being a councillor has many different aspects which are enjoyable. From attending community events to helping with projects that benefit the community, such as the refurbishment of the Singleton Road play park and the completion of the Buxford pavilion extension.

**5) What do you personally think is the most important part of the Council's work?**

What is the most important part, in my opinion, of Council's work? I would say listening to the parishioners as well as providing facilities and opportunities to help build an active community. Unfortunately, as a Parish Council, we do not have the powers to do everything but if we are able to do something requested then we will look at it.

**6) What do you feel is the Council's biggest achievement to date?**

The biggest achievement, I don't think I can say any one thing is the biggest because as I sit here I think of things that we, as a parish council, have done and then think of something else. Things such as taking over the responsibilities at Singleton Environment Centre, to renovating play parks and setting up the allotments at Hillcrest. Another achievement is having diverse, independent minded fellow councillors.

**7) What do you personally want to achieve as a Councillor in the future?**

Personally, I would like to make the parish a good place to live with an active community who can approach the parish council for support as well as supporting what the council is doing.

**8) What do you like to do in your spare time?**

My spare time is taken up with going to car meets for Smart cars as I am a great fan of the original models of the Fortwo and the lesser-known Roadster. And my other big thing in my life is the biggest resident of the parish, Flora, a 12ft tall traditionally built giant. Currently it is myself, Yolanda (my wife) and my not so young children with their partners who take her out as much as we can to different events around. If you want to know more about her then get in contact with me.



We have been busy planning our Big Jubilee Lunch for a while now and we are really looking forward to seeing as many of you as possible on **18th June 2022 from 11am** to help us celebrate the Queens Platinum Jubilee 2022, and the month of community.

The event will be held on the Great Chart Playing Fields (What3Words location tribes.status.lies) between 11am and 2:30pm. So make yourself a picnic and come down to the fields with your friends and family (or on your own, there will be plenty of other people to mix with) to experience all we have on offer.

We will have donuts and hot drinks from LE's Donuts and ice cream and cold drinks from Wayne's Whippys



Music will be provided by Ashford Concert Band



Singing and signing will be provided by Vision Signing Choir

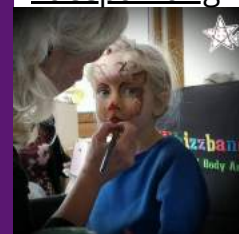


We will have a **FREE** bouncy castle and soft play area from Candytan Events

They might even bring some guests you recognise



Facepainting will be available from Whizzbang Facepainting



We will also have representatives from the following local organisations, charities and businesses who will be fundraising, selling products and running mini sessions throughout the event;

Singleton Environment Centre

Ashford Repair Cafe

Knit and Knatter/Sewing Circle

Eco Kids

Flora the Singleton Giant

Ewenique Therapeutic Craft Group

Singleton and Great Chart and Godinton WI groups

Sing and Sign

Emergency Exit Arts

Ashford Borough Council recycling team

Avon with Siobhan

Something Individual

East Kent Baby Memorial Garden

And more are being added every day so take a look at our website for the latest list

Not all of our vendors will be able to take card payments so please bring along some cash so you don't miss out





# YOU'VE ASKED WE'VE DONE



The big project that the council has recently been working on has been the replacement of the outdoor gym and improvements to the sports pitch at Cuckoo Park, see over the page for more information.



The play area in Great Chart has also had a couple of improvements. The baby swings have been replaced as they had been well used and were reaching the end of their safe life. And replacement parts for some of the gym equipment have also been fitted.

If you've been at the park during the day you may have seen machinery moving through the field, on the way up to the allotments - see below

After questions were raised over the correct route of footpath AW234, work was carried out with KCC to reinstate the correct route, clear the scrubland and prepare the land to expand the neighbouring allotments. There is a long waiting list for the allotments, so hopefully once the new plots are in place some of those patiently waiting on the list will be contacted.



Those who regularly use Cuckoo Lane will already be aware of the road closure that took place in April. This was to allow the installation of a new zebra crossing for both pedestrians and those on wheels. This has now been finished off and is already helping people in the Washford Farm area and beyond to cross safely over to the school and play park. There will also be work carried out in the next few weeks to paint more parking restriction lines around the school and nearby junctions.

Following a couple of recent incidents, a decision was made to improve the surface of the footpath running alongside Singleton Village Hall, connecting Hoxton Close and Strouts Road.

The surface has been levelled and tarmacked. This path remains unlit so if you do use it after dark, please take a torch and watch your footing. There are also alternative lit routes via Singleton Hill, Hoxton Close and Running Foxes Lane.



Our Steward has been busy upgrading the cabinets on our adult defibrillators in the parish. The defibs were already in place but are now in more secure cabinets requiring a code from the emergency services to access them. But just to recap, we now have defibs on the walls at Singleton Village Hall, Great Chart Village Hall, Singleton Environment Centre (extension building) and Great Chart Cricket Pavilion. There are also plans to run more defib training sessions over the coming months - see social media and noticeboards for dates and times.



And as they do during most weeks of most months, the stewards have both been out clearing footpaths, cutting back vegetation and mowing the grass in areas the parish council is responsible for. If there is an overgrown area near you, then you can let us know about it. If it doesn't belong to the parish council we can tell you who it does



belong to and help you to report it to them. Our Stewards have over 15 years of conservation experience and are well practised in looking for birds nests and other wildlife before starting any work.



# PARISH COUNCIL PROJECTS



The big project that the council has been working on during recent months has been the replacement of the outdoor gym at Cuckoo Park, and improvements to the pitch area.

The gym kit was reaching the end of its working life and using some ringfenced money from council reserves we were able to fund the complete refit without raising the precept.

The work to improve the pitch came after complaints regarding the time the area was unusable due to the mud levels in wetter weather.



Our community heroes scheme continues to grow, helping to support local residents who want to keep their local area clean. Local resident John said "We did our litter pick in our vicinity on Saturday and collected 7kg of rubbish. We last did the same area 2 weeks ago. It shows the necessity for the community to get involved in such matters. Hopefully the Parish Council can encourage more people/groups to become involved through the parish magazine, etc. Personally we only need to commit to 1hr a fortnight to keep on top of our area so others do not need to see it as time consuming. Fingers crossed."

For more information please contact the parish council.

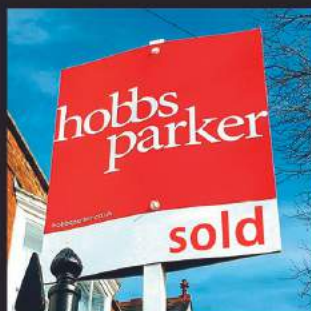


WE ARE LOOKING FOR  
COMMUNITY HEROES



If you are  
thinking  
of selling or  
letting your  
property...

Call the  
experts!



Sarah Holgate (Ashford)  
**01233 506260**

Simon Godfrey (Tenterden)  
**01580 766766**

[www.hobbsparker.co.uk](http://www.hobbsparker.co.uk)

# REPORTING



**In the complex web of local authorities and different agencies, it is often difficult to know who to report a problem to. We have put together the list below, which may look long, but covers the vast majority of issues. It is important that any issues you see are reported to the correct organisation so the problem can be dealt with quickly and efficiently.**

## Kent County Council

To report any emergency issues call **03000 414141** (Monday – Friday, 9am to 5pm), and **03000 419191** outside office hours, or go to [www.kent.gov.uk/roads-and-travel/report-a-problem](http://www.kent.gov.uk/roads-and-travel/report-a-problem)

- Street light faults
- Potholes
- Traffic signal faults
- Overgrown vegetation (including hedges and grass)
- Drainage
- Flooding

### Contacting Kent Police

Report a non-urgent crime online

[www.kent.police.uk/report](http://www.kent.police.uk/report)

Talk to the Police on LiveChat-available 24/7

[www.kent.police.uk/contact](http://www.kent.police.uk/contact)

In an emergency, if the crime is in progress or life is in danger call **999**

If deaf or speech impaired, text 'police' and your message to **60066**

## Great Chart with Singleton Parish Council

For issues relating to any of the areas below, please email the Parish Office at [TheClerk@greatchartsingleton-pc.gov.uk](mailto:TheClerk@greatchartsingleton-pc.gov.uk)

- Cuckoo Park (opposite John Wesley School)
- Great Chart Playing Fields (the area with the park and outdoor gym)
- The Viewing Point and the path running alongside Singleton Village Hall
- Dog poo bag dispensers
- The raised flowerbed at the bottom of Singleton Hill

## Ashford Borough Council

For issues relating to any of the following, please go to [www.ashford.gov.uk](http://www.ashford.gov.uk) and click on Report, or call **01233 331111**

### ENVIRONMENTAL ISSUES

- Abandoned trolleys
- Allotment issue
- Fly-tipping
- Noise Nuisance
- Overgrown Borders/Shrubs/Hedges or Grass Trees
- Abandoned Vehicles
- Bonfires
- Light Nuisance
- Odour

### HOUSING

- Squatters and unauthorised occupants
- Repairs
- Tenancy Fraud

### COMMUNITY

- Anti-Social Behaviour
- Public Toilets and community toilet scheme issue

### ANIMAL ISSUES

- Dog fouling
- Stray dogs
- Lost or stolen dogs
- Dead animals

### STREETS

- Illegal street trading
- Street cleansing, graffiti, vandalism or litter
- Overgrown Borders/Shrubs/Hedges or grass
- Overflowing/damaged litter bin

### BINS

- Assisted collections
- Replace, lost or broken bin
- Discarded syringes
- Missed collections
- Litter/dog bin issue

### FOOD AND HYGIENE ISSUES

- Suspected food poisoning
- Poor hygiene practices
- Problem with a food product

### PLANNING AND BUILDING CONTROL

- Dangerous structure
- Fly-posting
- Planning breach





# SINGLETON ENVIRONMENT CENTRE

Looking back over the last twelve months, I realised that it has been a little more than four years since TCV stopped running the Singleton Environment Centre (SEC) and the lease was taken on by your parish council. During that time, despite Covid, the centre has gone from strength to strength, earning, within the local community, an excellent reputation for environmental education, talks about nature and wildlife, activity days and school visits. We have started a Repair Café, built a two-storey extension with a viewing platform, not to mention Ashford's top out of town eatery, Footprints Café Bistro. The trust that runs the Centre, on behalf of the parish council, is a registered charity (1180577), Singleton Spaces. The stated aims of the charity are the preservation, protection and improvement of the natural environment and the advancement of education in conservation, protection, and improvement of the physical and natural environments. All these aims are for public benefit. The Centre runs a small surplus, and we plough all our income back into running the Centre. We aim to put on as many free events as we can and are grateful for all the support we get from the trustees, our many volunteers and the public. Most recently we have joined the Ashford Lottery, providing an extra way for the public to help support the Centre. Come and visit us soon and discover how our little oasis of green can bring some welcome relaxation into your life.  
Malcolm Wiffen, Chair, Singleton Spaces



## AMENITIES, OPEN SPACES AND ENVIRONMENT COMMITTEE

Firstly, I must start this report with an apology. The Christmas break was followed by covid in the Gathern household and I have been unable to attend meetings and keep up with things as I would have liked. However, we have made some progress with our key projects as detailed below.

**Allotments** – Many of you will have noticed that we have cleared the land adjacent to the current allotment site, ready to create more allotments and accommodate some of those on our waiting list.

**Mayor's Environment Day** – I attended this along with Councillor Wiffen. It was a very well organised, informative and enjoyable event with councillors from KCC, ABC and other parishes present. I delivered a presentation about our strategy to combat the problem of dog mess. The presentation was well-received. I was particularly interested in the presentation from Aspire in which they talked about their tree-planting strategy and their plans to create a tree trail in Ashford. The AOSEC had already discussed the idea of a tree trail in our parish so we will discuss this further with Aspire to exchange ideas.

**Bus stop roof gardens** – we received a quote for these but the cost was higher than we had anticipated. Undeterred, we looked at other sources of funding and found that there are grants available. We are currently looking into applying for a grant in the next financial year.

**Meadow Creation** – We met with representatives from Aspire and chose two areas of the parish that can be left wilder, rather than mown, as a first step. Aspire were very helpful and keen to work positively with us to achieve this. We also met with members of the Bumblebee Conservation Group to see if they could help us move this project forward. We are still waiting to hear from KWT.

**Buxford Meadow** – we have asked ABC for their Management Plan for Buxford Meadow as we want to see the plans they have for the area and how they maintain it. This management plan will be discussed at our next AOSEC meeting in April.

**Tree Planting** – in line with our own ambition to plant more trees in the parish and the Queen's Canopy initiative, we have been talking to Aspire about areas where we could plant more trees.

**Community Gardens** – We have been contacted by residents suggesting suitable sites for planters and community gardens. Many thanks for your ideas. Please do contact our clerk if you have suggestions for where we could plant more flowers, hedges, plants or trees.

Councillor Sally Gathern.



# LOCAL AMENITIES



**The Great Chart with Singleton Parish is well provisioned with local halls, COVID permitting they are all now back up and running for groups and events.**

## SINGLETON VILLAGE HALL



To book at Singleton Village Hall please contact the Bookings Secretary on [bookings@singletonvh.co.uk](mailto:bookings@singletonvh.co.uk) 07887 575647 or visit [www.singletonvillagehall.co.uk](http://www.singletonvillagehall.co.uk)

The Hall consists of the existing building which has 1 large Main Hall (approx. 140 people seated) and 1 small side room. There are kitchen & WC facilities including disabled.

The new building has the Extension Hall downstairs (approx. 60 people seated) with a fully fitted kitchen & WC facilities including disabled.

On the first floor is the Extension Hall upstairs is of a similar size (approx. 60 people seated) but can be divided off into two halls (approx. 30 people each) with a soundproof partition wall. This is accessed via a wide staircase or a lift for those with mobility issues. There are WC facilities and a small tea/coffee making room with a sink.

## GREAT CHART PLAYING FIELDS AND BUXFORD PAVILION



After all the repairs and maintenance work that had been carried out at the pavilion and on the playing fields, it was nice to see it being used by some new groups. However, at the start of March the pavilion was broken in to and every single inner door was smashed to pieces. Nothing of value is kept inside the pavilion but the time, money and effort put into getting the damage repaired has been considerable. Thankfully our insurance has covered most of the bills but it was very upsetting to see all the hard work done on painting and repairs destroyed overnight, and the pavilion put out of action for over a month.

On a brighter note, the playing fields will be hosting the Parish Council's Big Jubilee Lunch on 18th June, for which the pavilion will be fully repaired and looking forward to showing off its charms. If you are interested in hiring the pavilion for a fitness activity, meeting or event, please call 01233 427407 or email [bookings@greatchartplayingfields.org.uk](mailto:bookings@greatchartplayingfields.org.uk)

**Please be aware that due to the ongoing work to improve the quality of the football pitches for Pilgrims FC, there will no longer be any car boots held on the playing fields.**

## GREAT CHART VILLAGE HALL

Great Chart Village Hall, which has looked over the village of Great Chart since 1908, is now fully reopened to its regular user groups and event hires. It is the venue for the parish councils Pop Up Cafe on the second Wednesday of the month, and every other month it also hosts the Parish Council meeting, but is also a favourite with a number of other clubs and groups. The hall has a Facebook page at <https://www.facebook.com/Great-Chart-Village-Hall-134684416590425> and bookings can be made on 01233 610173.



# GROUP REPORTS



## CHILMINGTON GREEN COMMUNITY

Over at Chilmington Green it has been great to welcome people moving into their new homes here. As the site continues to grow across the different development areas we are beginning to see not just the building of houses but also the building of a new community here. We are exploring ways to enable people to make connections and grow friendships here, so that Chilmington Green becomes something more than just a bunch of shiny new houses.

Over Easter we ran an Egg Trail at 3 of the development sites. Families could come along and explore their local area as they tracked down the clues across the neighbourhood. We shared coffee and cake while the children played in the sunshine. We had almost 100 people attend and it was wonderful to see our new community growing positively through being together. Another opportunity for families to come together is through the Chilmington Toddlers group. This is open to parents & carers with pre-school children or babies and currently runs on Wednesdays 10-12 at Cade Road Church. We are going to follow up this success with our Jubilee Celebration on Friday 3rd June. And we hope to run many more community events and activities for Chilmington Green residents in the future. If you'd like more information on any of this, or have ideas or questions, please contact Tom Lewis on [discoveryashford@hotmail.com](mailto:discoveryashford@hotmail.com)



## NEIGHBOURHOOD WATCH

Peter New B.E.M. [peternew1@aol.com](mailto:peternew1@aol.com)

91725 Kent Police Volunteer & Community Neighbourhood Watch Team

As always, I am so grateful for the support and backing of this excellent publication and the space afforded to me for Community Neighbourhood Watch and Crime Prevention advice. As we ease into Summer, we need to focus on the types of crimes we face and how communities can stay free from crime and importantly how residents can be free from the fear of being a victim of crime. We also need to be bold and say that many crimes are PREVENTABLE and AVOIDABLE if we just take those few extra moments to be sure we are safe and secure. If we follow both those points by being Alert and Vigilant then we have a good chance of being crime free. These are the areas below where we can be vulnerable to as we go forward and where criminals will look to strike.



Ensure you keep main properties as secure as possible with more doors and windows open as the warmer weather comes. Even if just popping out for short periods.

VEHICLES especially vans with goods, equipment and tools left in them overnight. Cars especially, leave absolutely nothing whatsoever on show when parking up especially at night.

GARAGES, SHEDS, BARNS, STABLES, SPORTS PAVILLIONS, VILLAGE HALLS, CLUBHOUSES, OUTBUILDINGS and ANY FORM OF EXTERNAL STORAGE, will be targets.

Beware of SCAMS whether from 3, 30, 300 or 3000 miles away. By any phone, email, letter and even face to face on the doorsteps. Criminals will see just about anything as a potential scam. Barely had the winds died down from storm Eunice when rogue traders and scammers were at work in the community.

As always, the targeted people are our elderly, disabled and vulnerable in our communities.

All of us have been horrified, shocked and deeply saddened by the terrible events in the Ukraine. Again, evil scammers have seen this as yet another 'business opportunity' and as our best intentions are to send aid and monies quickly please take the time to ensure that you are dealing with a legitimate charity and or collection point for goods and donations. There are so many good avenues and organisation please just proceed with them.





# GROUP REPORTS



On all potential scams do absolutely nothing in a rush, that is what scammers rely on. Take your time! Check! Check again! and if in any doubt do nothing at all. It is vital that those with elderly relatives and friends are available to help and advise them when matters arise. If you would like to join Neighbourhood Watch which is totally free, then contact me on the email shown. Thank you all for your support which I greatly appreciate, and never take for granted.

## 1ST SINGLETON SCOUTS GROUP

In January a group of Cubs and Beavers travelled by train to the Rail Safety Centre in Thanet and had an enjoyable morning learning about the importance of safety around the railway.



The Beavers officially adopted a guide dog after fundraising the sponsorship amount. Many Beavers also experienced their first ever sleepover at Willesborough Scout Hut transforming into mad scientists for the event, earning their Experiment badge in the process. We were overwhelmed by parents support and were able to donate 25 boxes to the KCC shoe box appeal for Ukraine. Thank you everyone.



During the term the cubs have been gathering items to present for their collectors badge. It was amazing looking at their varied collections and hearing the knowledge they had gained about the items. For their mothers day gift this year they constructed a picture frame, measuring, sawing and joining the wood using a range of tools as part of the DIY badge. Thanks you to the additional adults that volunteered for the sessions. During the summer months there will be lots of outdoor activities including canoeing at Conningbrook, campfire cooking and cub camp.



## 1ST GREAT CHART SCOUTS GROUP

We have had another very busy and enjoyable term at First Great Chart. The Cubs have completed their Artist, Fire Safety, Global Issues and My Faith activity badges. As part of the My Faith badge, we spent a very informative and fun evening at Great Chart Church with the Reverend Cathie Aldis-Saunders and are very grateful to her for giving up her time for us.

We also had a visit from a Martial Arts teacher who taught the Cubs some basic self-defence moves. We are grateful to Lisa for providing such a fun evening for the Cubs.

The Cubs have also been working towards the 7 Challenge awards that make up the Silver Scout award by playing team games and doing problem solving and team-building activities. Our last meet of the term will be an Easter Party with an Easter egg hunt, hot cross buns and lots of fun and games.

With the summer weather (hopefully!) just around the corner, we are looking forward to getting outside this coming term to do the Scientist, Athletics and Naturalist badges, along with activities such as a litter pick, den-building, hiking, water sports, football and wide games.

Anyone interested in joining our pack, please contact our Akela, Sally Gatherern, at [sallygatherern@aol.com](mailto:sallygatherern@aol.com).

## ST MARY'S GREAT CHART

**Prepare the Way at Great Chart! [www.stmarysgreatchart.org](http://www.stmarysgreatchart.org)**

The church of St Mary's Great Chart has always been important to the local community. As well as providing a warm welcome to its regular and growing worshipping congregation, it is frequently used as a venue for weddings, baptisms and funerals for the wider community and for special services such as Christmas and Remembrance Day. Situated on the top of the hill, it is a familiar landmark to everyone living in Great Chart, Chilmington Green and Singleton.

However, the building has the potential to be used more widely and effectively to meet the needs of the local community. With the right facilities and improvements to the interior and exterior of the building, it could be even more of a focal point for community activity. The Church is a Grade 1 listed ancient





# GROUP REPORTS



building and it needs some significant work done to secure it for the future. The Janus Project has been launched to raise funds to undertake all the repair and re-ordering work. We have made a start, but there is more to be done.

The overall project will require a sum in the order of £800k but we need £100k for the next phase of the work which is to replace the path and entrance. Whilst we are seeking grants towards this sum, a significant proportion of the costs will need to come from direct giving and from fundraising events. We have great plans for our lovely church at Great Chart. The church has been at the centre of the community for generations in the past and we want to secure its place there for generations to come. Please help us. If you would like to make a contribution to the Janus Project, you can do so via bank transfer to Ashford Town PCC— Account Number 30686611 Sort Code 20-02-62 using reference “Janus Project” If you are a UK taxpayer and would like to Gift Aid your contribution(s) please contact Shirley Leslie by phone 07532 310266 or e-mail [Shirley.leslie@ashfordchurches.co.uk](mailto:Shirley.leslie@ashfordchurches.co.uk). Look out for our fundraising events, too, and come and join us if you can. For further information, see the website [www.stmarysgreatchart.org](http://www.stmarysgreatchart.org). To reserve tickets for any of our events, e-mail us at [janusgreatchart@ashfordchurches.co.uk](mailto:janusgreatchart@ashfordchurches.co.uk) Sally Lees, Chair, St Mary's Great Chart Fundraising Committee

## SINGLETON WI GROUP

Singleton WI meets on the 1st Thursday of the month, from 7pm-9pm at the Singleton Environment Centre, Wesley School Road, TN23 5LW. We are a friendly group of women and welcome new members and visitors. Feel free to come along to one of our meetings. Visitor fees are £5 per visit, first one is free, with a maximum of 2 paying visits.

Earlier this year Rachael, the Artist in Residence at the Singleton Environment Centre led us in an art session, where she showed us some sketching exercises and how drawing from life can be valuable to relax and connect better with nature.

In June we are celebrating the Queen's Platinum Jubilee, WI-style.

In July we are celebrating our first birthday with a party and we are also having a trip to a gin distillery.

If you'd like to attend any of our meetings, please book via [www.eventbrite.com/cc/singleton-wi-monthly-meetings-129619](http://www.eventbrite.com/cc/singleton-wi-monthly-meetings-129619) Our Facebook page is: [www.facebook.com/SingletonWI](http://www.facebook.com/SingletonWI)



## GREAT CHART & GODINTON WI

The members of Great Chart & Godinton Women's Institute recently celebrated the Centenary of Great Chart WI with a tree planting ceremony in Great Chart village and afternoon tea and cakes in the village hall afterwards. The actual centenary date was in March 2021 but like so many other occasions, the celebrations had to be delayed until this year but finally took place on a glorious spring sunny afternoon. Invited guests for the event included members from all the other WI's in the Kennington group together with Sheila Spiers, East Kent Federation Vice Chairman; retiring Federation Chairman, Gill Crone and the current Federation Chairman, Carol Evans. The secretary of Great Chart & Singleton Parish Council, Aniko Szocs also attended and grateful thanks were extended to the Parish Council for their sponsorship of the event. All guests were given a gift of a Sunflower brooch that the ladies of Great Chart & Godinton WI had made, to signify not only that the Sunflower has become a WI Calendar Girl's emblem but that the Sunflower is the national flower of Ukraine and in support of the people there.

President of Great Chart & Godinton WI, Janet Goodwin carried out the final planting of the flowering cherry tree, followed by many guests then tying a personal message label to the tree in commemoration of the event. It is hoped that the tree will now flourish and grow hopefully well into the next 100 years.

Any ladies interested in joining Great Chart & Godinton WI to enjoy many activities and make new friendships, the monthly meeting is the third Wednesday of the month, 7.30pm at Godinton Village Hall, Godinton Park for further information see our Facebook page: Great Chart & Godinton Women's Institute.



# CLUBS AND GROUPS



**Please be aware that times and dates may change due to coronavirus restrictions**

**1st Great Chart Scouts Group** - Contact Dave or Sally Gathern 01233 633966  
Beavers (6-8.yo) - Friday 5-6:30pm  
Cubs - (8-10.5yo) - Friday 6:30-8pm

**1st Singleton Scouts Group** - Contact Jill Lane 01233 641773/ 07799 886549  
Beavers (6-8yo) Wednesday 5:15-6:30pm  
Cubs (8-10.5yo) Wednesday 6:30-8pm

## **Great Chart & Godinton WI**

Secretary Janet Goodwin: 01233 332510  
Committee Member Pam Grigg: 01233 878013  
19:30 on 3rd Wednesday of the month at Godinton Village Hall

## **Singleton WI**

Meeting at Singleton Environment Centre on the first Thursday of the month. Contact Hannah on 07542 436522, [singletonwiekf@gmail.com](mailto:singletonwiekf@gmail.com) or @SingletonWI

## **Ashford Community Woodland**

[ashfordcommunitywoodland@hotmail.co.uk](mailto:ashfordcommunitywoodland@hotmail.co.uk)  
[www.ashfordcommunitywoodland.org](http://www.ashfordcommunitywoodland.org)

## **Repair Cafe Ashford**

Email: [lenchitt@yahoo.co.uk](mailto:lenchitt@yahoo.co.uk)  
1st and 3rd Wednesday of the month at SEC

## **Eco Kids**

Thursdays & Fridays 10-11:30 at Singleton Environment Centre. Email Jenny on [ecokidssec@gmail.com](mailto:ecokidssec@gmail.com)

## **Ashford Volunteer Centre**

Telephone: 01233 665535  
Email: [contact@ashfordvc.org.uk](mailto:contact@ashfordvc.org.uk)  
Website: <https://ashfordvc.org.uk>

**Speed Watch.** Contact area co-ordinator Garry Parry 01233 640110 [garry@whp.co.uk](mailto:garry@whp.co.uk)

**Paek Ma Taekwondo** - contact Master Geoff 6th Dan 07836 621060 at SVH.  
Tuesday 5:30-6:30pm / 6:30-8 Juniors and Seniors  
Thursday 6:30-8pm Juniors

**Dream Dragons Theatre** - Wednesdays 7-10pm at SVH. Contact 01233 668767 or [www.dreamdragons.co.uk](http://www.dreamdragons.co.uk)

**Stardust Studios** - Children's dance classes at SVH. Contact Natalie Kitts 01233 625786/ 0984956 or [info@starduststudios.co.uk](mailto:info@starduststudios.co.uk)

## **Flora the Singleton Giant.**

Contact Peter 01233 610241  
[peter@singleongiant.org.uk](mailto:peter@singleongiant.org.uk)

## **Great Chart Cricket Club**

[www.greatchartcc.co.uk](http://www.greatchartcc.co.uk)

**Ashford Concert Band.** Thursdays 7-8:30pm at John Wesley School  
[www.ashfordconcertband.co.uk](http://www.ashfordconcertband.co.uk)  
[info@ashfordconcertband.co.uk](mailto:info@ashfordconcertband.co.uk)

## **Grace Fellowship at Singleton Road**

[www.gracefellowship.org.uk](http://www.gracefellowship.org.uk)

## **Friends of Singleton Lake**

Website: [www.friendsofsingletonlake.co.uk](http://www.friendsofsingletonlake.co.uk)

**St Mary's Great Chart & Singleton.** Sunday services - 9:30am at St Mary's Great Chart and 11am at St Mary's in SVH. Contact Libby Varley 01233 620371. [office@stmarysgreatchart.org](mailto:office@stmarysgreatchart.org)  
[www.stmarysgreatchart.org](http://www.stmarysgreatchart.org)

**Pilgrims Football Club** - Contact Kyran Wilford 07984 352008 [kyran@pilgrimsfc.co.uk](mailto:kyran@pilgrimsfc.co.uk)

# USEFUL INFORMATION



## VENUE CONTACT DETAILS

### Singleton Village Hall

**Tel:** 07887 575647

**Email:** [bookings@singletonvh.co.uk](mailto:bookings@singletonvh.co.uk)

### Great Chart Village Hall

**Tel:** 01233 610173

**Email:** [greatestchartvillagehall@yahoo.co.uk](mailto:greatestchartvillagehall@yahoo.co.uk)

### Great Chart Playing Fields Buxford Pavilion

**Tel:** 01233 427407

**Email:** [bookings@greatestchartplayingfields.org.uk](mailto:bookings@greatestchartplayingfields.org.uk)

### Singleton Environment Centre

**Tel:** 01233 343885

**Email:** [centremanager@singletonenvironmentcentre.org.uk](mailto:centremanager@singletonenvironmentcentre.org.uk)

## EMERGENCY CONTACT DETAILS

William Harvey Hospital  
**01233 633331**

Kent Highways Service  
**03000 418181**

Environment Agency  
**03708 506 506**

Environment Incident Reporting  
**0800 80 70 60**

South East Water  
**0333 000 0001**

Floodline  
**0345 988 1188**

UK Powernet  
**0800 029 4285**

Power Cut  
**0800 31 63 105**

Samaritans  
**116 123** email [jo@samaritans.org](mailto:jo@samaritans.org)

Kent County Council - Enquiries - Social Services  
**03000 41 41 41**

Emergency Services **999**  
Press **55** on a mobile if unsafe to speak  
Text **60066** if deaf/hard of hearing

Kent Police - non emergency numbers  
Call **101** or use **Live Chat** at [www.kent.police.uk](http://www.kent.police.uk)  
Call **111** for medical non-emergencies

## OTHER INFO

### Allotments

Contact the Parish Clerk on 01233 616923  
[theclerk@greatestchartsingleton-pc.gov.uk](mailto:theclerk@greatestchartsingleton-pc.gov.uk)

### Dog Warden Colin Leek

Tel: 01233 330340

Email: [colin.leek@ashford.gov.uk](mailto:colin.leek@ashford.gov.uk)

### Mobile Library

Aske's Court: Friday 14:55-15:25

Knoll Lane: Friday 15:45-16:15

Coronation Drive: Saturday: 10:55-11:25





# BOROUGH & COUNTY COUNCILLOR CONTACT INFORMATION

## ASHFORD BOROUGH COUNCILLORS

Weald Central Ward Councillor:  
Jessamy Blanford

Tel: 01233 840050  
Email: [jessamy.blanford@ashford.gov.uk](mailto:jessamy.blanford@ashford.gov.uk)

Singleton East Ward Councillor:  
Bill Barrett

Tel: 07449 454044  
Email: [bill.barrett@ashford.gov.uk](mailto:bill.barrett@ashford.gov.uk)

Singleton West Ward Councillor:  
Kalysha Howard-Smith

Tel: 07586 332504  
Email: [kalysha.howardsmith@ashford.gov.uk](mailto:kalysha.howardsmith@ashford.gov.uk)

Washford Ward Councillor:  
Neil Shorter

Tel: 07827 253400  
Email: [neil.shorter@ashford.gov.uk](mailto:neil.shorter@ashford.gov.uk)

## KENT COUNTY COUNCILLORS

Councillor  
Charlie Simkins

Tel: 01233 756705  
Email: [charlie.simkins@kent.gov.uk](mailto:charlie.simkins@kent.gov.uk)

Councillor  
Dirk Ross

Tel: 07776 270416  
Email: [dirk.ross@kent.gov.uk](mailto:dirk.ross@kent.gov.uk)

## COUNCIL CONTACT DETAILS

Ashford Borough Council

Tel: 01233 331111  
Web: [www.ashford.gov.uk](http://www.ashford.gov.uk)

Kent County Council

Tel: 03000 414141  
Web: [www.kent.gov.uk](http://www.kent.gov.uk)

## PARISH COUNCIL STAFF

Parish Clerk  
Aniko Szocs

Tel: 01233 616923  
Email: [theclerk@greatchartsingleton-pc.gov.uk](mailto:theclerk@greatchartsingleton-pc.gov.uk)

Deputy Clerk  
Paula Cowperthwaite

Tel: 01233 616923  
Email: [paula.cowperthwaite@greatchartsingleton-pc.gov.uk](mailto:paula.cowperthwaite@greatchartsingleton-pc.gov.uk)

Parish Steward  
Peter Walkden

Email: [theclerk@greatchartsingleton-pc.gov.uk](mailto:theclerk@greatchartsingleton-pc.gov.uk)

Assistant Parish Steward  
Robert Heath

Email: [theclerk@greatchartsingleton-pc.gov.uk](mailto:theclerk@greatchartsingleton-pc.gov.uk)

# PARISH COUNCILLOR CONTACT INFORMATION



## CHILMINGTON WARD

Cllr Ian  
McClintock

Tel: 07919 278828  
Email: [ian.mcclintock@greatchartsingleton-pc.gov.uk](mailto:ian.mcclintock@greatchartsingleton-pc.gov.uk)

## GREAT CHART WITH SINGLETON NORTH WARD

Cllr Paul  
Tate

Tel: 07850 082023  
Email: [paul.tate@greatchartsingleton-pc.gov.uk](mailto:paul.tate@greatchartsingleton-pc.gov.uk)

## SINGLETON EAST WARD

Cllr Katrina  
Alexander

Tel: 07791 632493  
Email: [katrina.alexander@greatchartsingleton-pc.gov.uk](mailto:katrina.alexander@greatchartsingleton-pc.gov.uk)

Cllr Janet  
Sullivan

Tel: 01233 645400  
Email: [janet.sullivan@greatchartsingleton-pc.gov.uk](mailto:janet.sullivan@greatchartsingleton-pc.gov.uk)

Cllr Malcolm  
Wiffen

Tel: 01233 635016  
Email: [malcolm.wiffen@greatchartsingleton-pc.gov.uk](mailto:malcolm.wiffen@greatchartsingleton-pc.gov.uk)

Vacant  
post

## SINGLETON WEST WARD

Cllr Peter  
Barker

Tel: 01233 610241  
Email: [peter.barker@greatchartsingleton-pc.gov.uk](mailto:peter.barker@greatchartsingleton-pc.gov.uk)

Cllr Yolanda  
Barker

Tel: 01233 610241  
Email: [yolanda.barker@greatchartsingleton-pc.gov.uk](mailto:yolanda.barker@greatchartsingleton-pc.gov.uk)

Cllr Geoffrey  
Darvill

Tel: 01233 642357  
Email: [geoffrey.darvill@greatchartsingleton-pc.gov.uk](mailto:geoffrey.darvill@greatchartsingleton-pc.gov.uk)

Cllr Sally  
Gathern

Tel: 07815 803862  
Email: [sally.gathern@greatchartsingleton-pc.gov.uk](mailto:sally.gathern@greatchartsingleton-pc.gov.uk)

## WASHFORD WARD

Cllr Tom  
Ackrill

Tel: 07780 470668  
Email: [thomas.ackrill@greatchartsingleton-pc.gov.uk](mailto:thomas.ackrill@greatchartsingleton-pc.gov.uk)





[WWW.GREATCHARTSINGLETON-PC.GOV.UK](http://WWW.GREATCHARTSINGLETON-PC.GOV.UK)



# Big Jubilee Lunch

**18 June 2022**  
**11-2:30**

JOIN YOUR LOCAL COMMUNITY  
ON **GREAT CHART PLAYING FIELDS**  
CELEBRATING THE QUEEN'S PLATINUM JUBILEE  
& THE MONTH OF COMMUNITY

BRING YOUR PICNIC AND ENJOY

- ENTERTAINMENT & PERFORMANCES
- GAMES & ACTIVITIES
- ARTS & CRAFTS
- REFRESHMENTS
- INFORMATION STALLS
- TREASURE & NATURE HUNTS

JUBILEE  
**the big lunch**

