

# GREAT CHART WITH SINGLETON PARISH COUNCIL

## In This Newsletter

- Parish Council News
- Meeting Dates and venues for 2022
- Events Diary for 2022!

### Updates on

- 2022-23 Budget
- Environmental Projects
- Remembrance
- What to report, how and who to
- Updates from Clubs and Groups
- Useful Contact Info

## DATES FOR YOUR DIARY

- Council meeting dates
  - 14th February
  - 14th March
- Pop Up Cafe
  - 16th February
  - 16th March
  - 13th April



**GREAT CHART**  
with **SINGLETON**  
Parish Council



# INSIDE THIS EDITION



<b>Parish Council News</b>	<b>Page 3</b>
<b>Parish Council Meeting Dates</b>	<b>Page 4</b>
<b>2022-2023 Budget</b>	<b>Page 5</b>
<b>2022 Events Timeline</b>	<b>Pages 6</b>
<b>You've Asked, We've Done</b>	<b>Page 7</b>
<b>Remembrance Sunday 2021</b>	<b>Page 8</b>
<b>Reporting - what? who to? and how?</b>	<b>Page 9</b>
<b>Singleton Environment Centre</b>	<b>Page 10</b>
<b>Ashford Community Woodlands</b>	<b>Page 10</b>
<b>Local Environment</b>	<b>Pages 11</b>
<b>Tree Protection Orders</b>	<b>Pages 12</b>
<b>Local Amenities</b>	<b>Pages 13</b>
<b>Group Reports</b>	<b>Pages 14-15</b>
<b>Hillcrest Allotments</b>	<b>Page 16</b>
<b>Clubs, Groups, Information and Contacts</b>	<b>Pages 17-20</b>

## Keep In Touch



[www.greatchartsingleton-pc.gov.uk](http://www.greatchartsingleton-pc.gov.uk)



greatchartwithsingletonparishcouncil



Gcwspc



GCwSPC



theclerk@greatchartsingleton-pc.gov.uk



01233 616923

## Photo Credits

Page 1 - Church, Katie Bourner;  
Robin, Emma Jobber

All other photos are either  
council's own or provided with  
the relevant article

## Newsletter Advertising and Articles

This newsletter is produced by Great Chart with Singleton Parish Council and is distributed to every house within the Parish and also included on our website and social media pages.

We welcome submissions for articles and events from local clubs, groups and businesses that benefit those living within our parish.

Any views or opinions included in this newsletter are solely those of the authors and do not necessarily represent those of the Parish Council.

We are able to offer advertising and sponsorship opportunities for local businesses.

Please contact the Clerk using the contact details above for more information.



# PARISH COUNCIL NEWS



In our first newsletter of 2022 we just wanted to wish you all a Happy New Year. The last two years have been very strange years, we can only hope that this one is a little better. You will see from our Events Calendar on page six that we are planning as though life will start to return to normal, but we will always follow Government guidelines when it comes to social gatherings. Our Chairman's Thoughts page will also return in the next issue.

One of our main planned events this year will be in celebration of the Queens Jubilee in June. On Saturday 18th we plan to host a traditional village fete on Great Chart Playing Fields, with performances, refreshments, games and activities for all. We hope to see as many people there as possible but if you would like to showcase your group's talents, share information about your organisation or volunteer to help, please get in touch as soon as possible.



The Pop Up Cafe made it's welcome return at the end of 2021 and, depending on future COVID restrictions we look forward to running all through 2022. We plan to run 11-1pm every month at Great Chart Village Hall, as we previously have done, but also 2-4pm every second month at Singleton Village Hall to enable us to reach more residents.

We had another great turnout for our scarecrow trail over the October half term. The winning scarecrows can be seen here but we were very impressed with the level of effort put in by everyone who took part. Due to the positive response we had when we thought we may have to cancel, we plan to definitely go ahead this year with a much longer lead up to allow more people to register and for you to have more planning time for your scarecrows. Keep your eye on social media or the events page on our website once summer is over [www.greatchartsingleton-pc.gov.uk/Events\\_31368.aspx](http://www.greatchartsingleton-pc.gov.uk/Events_31368.aspx)



If one of your new year's resolutions includes spending some time volunteering, or helping to improve your local area, please consider joining our Community Heroes scheme. By signing up you will be able to borrow all the kits you need to carry out tasks such as litter picking at a time to suit you, not just when an event is organised. If you are interested, visit the relevant page on our website

[www.greatchartsingleton-pc.gov.uk/Community\\_Heroes\\_40352.aspx](http://www.greatchartsingleton-pc.gov.uk/Community_Heroes_40352.aspx)

Did you know that the parish council ringfences a pot of money each year to grant to local organisations who may need funds to help get set up, or to fund a project or event. If you run a not-for-profit group that benefits the residents of Great Chart or Singleton, visit our website to read the criteria and download an application form [www.greatchartsingleton-pc.gov.uk/Parish\\_Grants\\_30757.aspx](http://www.greatchartsingleton-pc.gov.uk/Parish_Grants_30757.aspx)



We had a number of entries to our tree competition. The winner was Kay with her pyrography tree, congratulations Kay. A selection of other entries are also shown here, it was lovely to see the artwork produced by our residents.



You should all hopefully be aware by now that all roads along Hoxton Close to Wesley School Road now have a 20MPH speed limit. Banners featuring posters from both schools have been displayed outside each school and the artists of the winning designs were presented with book vouchers for their efforts.





# PARISH COUNCIL MEETINGS 2022



**The Parish Council meets on the 2nd Monday of the month to discuss local issues and to make decisions. The meeting venue alternates between Singleton Village Hall and Great Chart Village Hall. The dates and venues for the rest of 2022 are confirmed below, why not come along to a meeting to find out more about the Parish Council's activities, and have your say. For more information on agendas and minutes please visit our website [www.greatchartsingleton-pc.gov.uk](http://www.greatchartsingleton-pc.gov.uk) and click on The Council tab**

**The remaining dates for 2022 meetings are:**

- 14th February 2022 - Great Chart Village Hall**
- 14th March 2022 - Singleton Village Hall**
- 11th April 2022 - Great Chart Village Hall**
- 9th May 2022 - Singleton Village Hall**
- 16th May 2022 - Singleton Village Hall**
- 13th June 2022 - Great Chart Village Hall**
- 11th July 2022 - Singleton Village Hall**
- 12th September 2022 - Great Chart Village Hall**
- 10th October 2022 - Singleton Village Hall**
- 14th November 2022 - Great Chart Village Hall**
- 12th December 2022 - Singleton Village Hall**

**If between planned meetings an urgent issue arises, an Extraordinary Meeting can be called. These are announced at least three days in advance and are publicised on our website and social media.**

## **Remote Meetings**

At the start of the coronavirus pandemic, emergency legislation was passed to allow Parish Councils to meet remotely. This legislation expired on 6th May 2021 and was not extended. This means that to comply with current law, the council must meet face-to-face for all future meetings. We are aware that some residents will continue to social distance for the foreseeable future, so we look forward to seeing you at a meeting as soon as you feel comfortable to attend.



# BUDGET 2022-23



Every year, as autumn starts, parish and town councils are required to start their draft budget for the next financial year. The image below shows the headlines from the 2022-23 budget, what the figures have changed to, and how much they have changed by. This was discussed and approved at the 13th December 2021 full council meeting and the request for the precept amount is made to Ashford Borough Council in January.

If you have any questions on what these figures mean, or what exactly the money will be spent on, please feel free to contact the Parish Council. We prefer to be open and honest about the taxpayers money we are spending. Better yet, come along to one of our council meetings to be involved in the detailed discussions on how the money gets spent.

## Headlines from next year's budget

The precept is the total amount requested each year from Ashford Borough Council for the 6801 residents counted in the Parish at the last census.

### Precept

**£299,738** ↑  
up by  
**£33.8K**



Covers salaries for the Clerk, Deputy Clerk, Youth Worker, and some additional hours for our Stewards who make such a difference out and about and are also hoping to work on some new environmental projects


### Staff Salaries

**£120K** ↑  
up by  
**£15K**



### Play Park Reserves

**£24.3K** ↑  
up by  
**£0.9K**



This amount is 'reserved' each year to reduce the need to increase precepts when park equipment needs replacing. There will be significant work taking place at Cuckoo Park next year - watch this space for updates!

### Newsletter

**£8K** ↑  
up by  
**4.5K**



Our newsletter remains a favourite way for many residents to receive updates from us. As Chilmington grows, new homes are added to our distribution list every issue, which increases printing and delivery costs.

Previously purchased grounds maintenance equipment, and the end of a previous contract, means that grass cutting on parish land is now all carried out in house.

### Maintenance Costs

**£2.5K** ↓  
down by  
**£1.7K**



Over the last few years we have instigated a number of new environmental projects. These have been well received and with Climate Change firmly on the agenda, we want to build on what we have successfully started. **Think Global, Act Local**

### Projects

**£10K** ↑  
up by  
**£5K**



### Events


**£2.5K** ↑



We have hosted a number of events recently, all of which have been well attended and received. We plan to host more in the future, so we created a budget line to prepare for them - including the Platinum Jubilee celebrations in June.

### Defibs

**£500** ↓  
down by  
**£1.5K**



By the time the next financial year starts, there will be 4 defibrillators installed across the parish. This means the budget line has reduced to just maintenance costs, such as replacement pads and batteries.

# EVENTS DIARY 2022



As 2022 starts, we are once again under the shadow of COVID-19. However, we as a council remain hopeful that we will be able to run the majority of the events we have highlighted below. We will of course abide by whatever the COVID guidelines are at the time, but getting out and about and meeting residents is a key part of being a pro-active council.

Our council meetings will continue to take place on the second Monday of every month, and the Pop Up Cafe will run on the Wednesday after the council meetings. We have our new quarterly photo competition open to anyone living, working or visiting our parish. We also plan to run a number of events hosted at Singleton Environment Centre, and we have big plans for a Jubilee event at Great Chart Playing Fields on Saturday June 18th. Please keep an eye on our social media, noticeboards or [www.greatchartsingleton-pc.gov.uk/Events\\_31368.aspx](http://www.greatchartsingleton-pc.gov.uk/Events_31368.aspx) for more information on all these events.

## JANUARY

**Council Meeting: 10th**  
**Pop Up Cafe: 12th**

**Photo Competition**  
**What Winter Means To Me**  
closes Friday  
14th January



## FEBRUARY

**Council Meeting: 14th**  
**Pop Up Cafe: 16th**

**Bike Marking**  
**Thursday 17th February**



## MARCH

**Council Meeting: 14th**  
**Pop Up Cafe: 16th**

**Photo Competition**  
**New Beginnings**  
closes Friday  
15th April



## APRIL

**Council Meeting: 11th**  
**Pop Up Cafe: 13th**

**Activity Day at**  
**Singleton**  
**Environment Centre**  
during the Easter  
school holiday



## MAY

**Council Meeting: 9th**  
**Pop Up Cafe: 11th**

**Annual Meeting of**  
**Electors**  
**Monday 16th May**



## JUNE

**Council Meeting: 13th**  
**Pop Up Cafe: 15th**



**Big Jubilee**  
**Lunch**  
**Saturday**  
**18th June**

## JULY

**Council Meeting: 11th**  
**Pop Up Cafe: 13th**

**Photo Competition**  
**What I Love About Where**  
**I Live**  
closes Friday  
15th July



## AUGUST

**Council Meeting:**  
No Meeting  
**Pop Up Cafe: 10th**

**Activity Day at**  
**Singleton**  
**Environment Centre**  
Saturday 27th  
August



## SEPTEMBER

**Council Meeting: 12th**  
**Pop Up Cafe: 14th**

**Photo Competition**  
**Colours**  
closes Friday  
14th October



## OCTOBER

**Council Meeting: 10th**  
**Pop Up Cafe: 12th**

**Scarecrow Trail**  
**October Half Term**



## NOVEMBER

**Council Meeting: 14th**  
**Pop Up Cafe: 16th**

**Bike Marking**  
**Date TBC**



## DECEMBER

**Council Meeting: 12th**  
**Pop Up Cafe: 14th**





# YOU'VE ASKED WE'VE DONE



The stewards have been busy clearing the paths along Tithe Barn Lane and Mead Walk. In the autumn, the many beautiful trees along Tithe Barn Lane drop their leaves which can make the paths slippery and difficult to follow. The leaves and mud were cleared, and whilst they were there, the Stewards also cut back some vegetation to make the area much easier to navigate.

Over on the Chilmington development, we have been able to install our latest noticeboard on the Barratts side. The same as all our other noticeboards, this has one lockable side for the parish council to use, and the other side is open for non-profit organisations to advertise services and local events. We have one more noticeboard left to install on the Hodson development once we are given permission, and the Jarvis development already has access to the noticeboard on Bartletts Lane.



Also on the Chilmington development, we were asked to install a number of 20mph signs on the Barratts development to make it clear that there is a speed limit. The highways are currently unadopted, and residents were concerned about speeding vehicles around residential houses where children are present. This was carried out with the kind permission of Barratts Homes.

Over the space of a few months, and between other jobs, the Stewards have been cleaning up the road name signs in the parish. It's a small job, but it makes a big difference, especially to visitors. And we have also identified 18 road name signs that could do with replacing so these have been reported to ABC and you should see them being replaced shortly.



As much as the Great Chart Playing Fields Association is working hard to maintain both the playing fields, we do not have responsibility for the Public Rights Of Way that run through the area. The poor state of the bridge was reported to KCC in February and we were really pleased to see a new one installed in October. This allows much easier access over the stream between Buxford Meadow and the main playing field.

Over recent months the octagon at the centre of the spinning disc on Cuckoo Park has deteriorated and on a recent inspection it was flagged as needing to be replaced before it caused an injury. The Stewards have now taken out the old piece and replaced it. The outdoor gym and basketball area are also due for a major overhaul in the spring so keep an eye out for further details.



The stewards have also been busy clearing the path that runs along the side of Singleton Village Hall to Strouts Road and Normandy Way. They have also cleared the mud that often covers the path, and as we know the path can get clogged up and isn't lit, we have placed these signs at various points along the path.



# REMEMBRANCE SUNDAY 2021



Having missed a full parade last year due to the pandemic restrictions, it was good to see such an amazing turnout this year. There were 123 people from young uniformed groups immaculately turned out leading a total of nearly 280 people to the Memorial. Again, due to restrictions, the number at the service in St Mary's was restricted.

The morning started out dull with a fine drizzle, but as the parade commenced its slow march up The Street, blue skies appeared and the sun shone.

On Thursday 11th four groups from three different schools visited the memorial to Remember the Fallen and lay their wreaths, one from as far away as Beaver Road. It is heartening that we are seeing an ever increasing number of young people attracted to Great Chart for Remembrance events.



## KENT POLICE

### e-scooters - know the law

We have been asked to share the following information by Kent Police

#### What you need to know

e-scooters are classed as Personal Light Electric Vehicles (PLEVs), which means they are treated as motor vehicles and are subject to the same legal requirements, such as driving license, insurance, number plates, lighting, road tax, crash helmets etc. **Without these, e-scooters cannot be used legally on the road.**

The Government is trialling the use of approval rental e-scooters as environmentally friendly modes of transport in some specific locations in the UK. For the rest of the country, under current law, e-scooters can only be used on private land.

#### What should I do now?

It's our priority to keep you and other road users safe.

We are obliged to take action against anyone who is caught repeatedly using an e-scooter illegally or in a way that causes a nuisance to others. In these circumstances we have the power to seize the e-scooter under Section 59 of the Police Reform Act/165 of the Road Traffic Act - and we'd really prefer not to.

**Please make sure you only use your e-scooter on private land, and not on a road, cycle lane or pavement.**

For more information about powered transporters and the law, visit [www.gov.uk](https://www.gov.uk)



**Kent  
Police**





**In the complex web of local authorities and different agencies, it is often difficult to know who to report a problem to. We have put together the list below, which may look long, but covers the vast majority of issues. It is important that any issues you see are reported to the correct organisation so the problem can be dealt with quickly and efficiently.**

## Kent County Council

To report any emergency issues call **03000 414141** (Monday – Friday, 9am to 5pm), and **03000 419191** outside office hours, or go to [www.kent.gov.uk/roads-and-travel/report-a-problem](http://www.kent.gov.uk/roads-and-travel/report-a-problem)

- Street light faults
- Potholes
- Traffic signal faults
- Overgrown vegetation (including hedges and grass)
- Drainage
- Flooding

### Contacting Kent Police

Report a non-urgent crime online

[www.kent.police.uk/report](http://www.kent.police.uk/report)

Talk to the Police on LiveChat-available 24/7

[www.kent.police.uk/contact](http://www.kent.police.uk/contact)

In an emergency, if the crime is in progress or life is in danger call **999**

If deaf or speech impaired, text 'police' and your message to **60066**

## Great Chart with Singleton Parish Council

For issues relating to any of the areas below, please email the Parish Office at [TheClerk@greatchartsingleton-pc.gov.uk](mailto:TheClerk@greatchartsingleton-pc.gov.uk)

- Cuckoo Park (opposite John Wesley School)
- Great Chart Playing Fields (the area with the park and outdoor gym)
- The Viewing Point and the path running alongside Singleton Village Hall
- Dog poo bag dispensers
- The raised flowerbed at the bottom of Singleton Hill

## Ashford Borough Council

For issues relating to any of the following, please go to [www.ashford.gov.uk](http://www.ashford.gov.uk) and click on Report, or call **01233 331111**

### ENVIRONMENTAL ISSUES

- Abandoned trolleys
- Allotment issue
- Fly-tipping
- Noise Nuisance
- Overgrown Borders/Shrubs/Hedges or Grass Trees
- Abandoned Vehicles
- Bonfires
- Light Nuisance
- Odour

### HOUSING

- Squatters and unauthorised occupants
- Repairs
- Tenancy Fraud

### COMMUNITY

- Anti-Social Behaviour
- Public Toilets and community toilet scheme issue

### ANIMAL ISSUES

- Dog fouling
- Stray dogs
- Lost or stolen dogs
- Dead animals

### STREETS

- Illegal street trading
- Street cleansing, graffiti, vandalism or litter
- Overgrown Borders/Shrubs/Hedges or grass
- Overflowing/damaged litter bin

### BINS

- Assisted collections
- Replace, lost or broken bin
- Discarded syringes
- Missed collections
- Litter/dog bin issue

### FOOD AND HYGIENE ISSUES

- Suspected food poisoning
- Poor hygiene practices
- Problem with a food product

### PLANNING AND BUILDING CONTROL

- Dangerous structure
- Fly-posting
- Planning breach

# SINGLETON ENVIRONMENT CENTRE

Singleton Environment Centre has been making the most of the run up to Christmas over the last few weeks. We have held a number of Christmas related events such as the Christmas Fayre, StorySacks and card upcycling sessions and Christmas related EcoKids and Mini Professor classes.

We have had our eco-friendly Christmas trees up around the centre, and available as a raffle prize. The picture below shows one of our holly trees, decorated with handmade ornaments from the



resident Knit and Knatter group, and accompanied

by a festive looking Snowy showcasing one of the wreaths also made on site. Footprints Cafe and Bistro have been providing their ever popular Christmas dinners throughout December, made from locally sourced produce and all prepared freshly on site.

The Repair Cafe has also been selling some of their handmade, recycled or repaired items. This helps raise funds to help keep the Repair Cafe running, and broken items out of landfill.

Speaking of fundraising, did you know that the Singleton Spaces charity that runs the Environment Centre is registered with Amazon Smile? If you regularly use Amazon, you can go to the Smile page, choose **Singleton Spaces** and raise money for the Centre without having to do anything more - apart from shop!



## ASHFORD COMMUNITY WOODLAND

Many regular users of the woodland will have noticed that during the recent lockdowns our volunteers have done their best to keep this beautiful woodland accessible to all. Even though we were restricted with numbers, and many of us were in the vulnerable groups, we still managed to clear vegetation from the paths and cut back overhanging tree branches. We were also able to lay aggregate on the informal path from Shrew Gate at De Montfort Park to Fox Gate. This then linked up with an existing formal path across the woodland to allow children to get to John Wesley School without getting too muddy.

As you can imagine there is a lot of work involved in managing the woodland and meadow areas. All of the work on the site is carried out by volunteers. Due to the lockdowns, many areas of the site have now become very overgrown. This winter we plan to cut back the hedge which we laid a few years ago. The hedge has become very tall and needs to be cut to enable the lower parts to thicken up. This task will be carried out over the winter so that we do not disturb birds during the nesting season.

Would anyone like to help us with this and other tasks ?

We generally meet at the car park at the top of Singleton Hill on the first Saturday of every month at 10 am. (This car park is only open on task days) We normally work until around 1pm. If you are interested, just come along, wearing suitable clothing and footwear. Please bring gloves if you have them and a drink. Tools and instruction will be provided. There is a task to suit all abilities, as tasks like litter picking are always needed.

For further information, please ring Jenny Tippen 01233 622070.





## Amenities, Open Spaces and Environment Committee Report

Update on our projects November 2021

**Bus stop roof gardens** – we are still pursuing this idea and are currently in negotiations with a company to action this for us.

**Meadow Creation** – We are still waiting to hear from the Kent Wildlife Trust about progressing this project and creating a pond on the North Field. It has been a frustrating wait, longer than we hoped, but we are keen to progress this. We have talked to Aspire about the ongoing maintenance meadow areas would require and they are very positive about the idea and keen to work with us and the KWT.

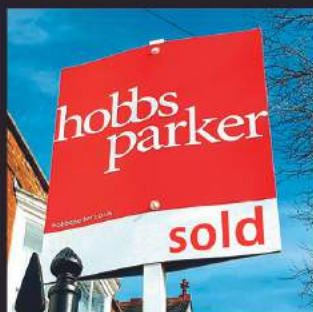
**Buxford Meadow** – we have asked ABC for their Management Plan for Buxford Meadow as we want to see the plans they have for the area and how they maintain it.

**Tree Planting** – in line with our own ambition to plant more trees in the parish and the Queen's Canopy initiative, we have been talking to Aspire about areas where we could plant more trees.

**Community Gardens** – We have identified a raised flower bed in the parish where we would like to plant a community garden. The idea is for residents to decide what they would like to see planted in the bed and for them to be involved with the planting and maintenance of it. Residents could choose to plant flowers, fruit trees, a vegetable patch, shrubs or a mix of things. Obviously, we would have to be guided by the suitability of the site for a particular plant but the idea is to give residents a chance to have a voice about what is planted in their area and to benefit from it. The Parish Council has set aside funds to help pay for compost and other reasonable costs. Residents can give whatever time they wish to the project. We appreciate that people are busy but even a couple of hours a year can help and we hope it will be a way of engaging people in their environment and bringing communities together for the benefit of all. We have designed a survey for the first area we have identified and residents there will receive this shortly. However, this is something we would like to eventually roll out across the parish and, in light of that, if you have an idea for a raised bed or green space near you, please do get in contact with us.  
Councillor Sally Gatherern.

If you are  
thinking  
of selling or  
letting your  
property...

Call the  
experts!



Sarah Holgate (Ashford)

**01233 506260**

Simon Godfrey (Tenterden)

**01580 766766**

[www.hobbsparker.co.uk](http://www.hobbsparker.co.uk)



# PLANNING MATTERS



## What is a Tree Preservation Order? (TPO)

A Tree Preservation Order (TPOs) can be made by a local planning authority to protect specific trees, groups of trees or woodlands.

This is a written order which, unless the local planning authority has provided written consent, makes it an offence for trees with a TPO to be:

- Cut down;
- Topped;
- Lopped;
- Uprooted;
- Wilfully damaged;
- Wilfully destroyed.



## How do I get a TPO on a tree or wood?

If you are interested in placing a TPO on a tree or wood, one of the first things you need to do is to contact the council and ask to speak to the tree officer.

Be sure to make them aware of why you feel the tree needs to be protected: usually TPOs are placed on a tree or wood that's deemed to be a local amenity.

Remember though, making a TPO is a discretionary power - the council does not have to place a TPO on any tree.

However, where one is made, the council does have a duty to enforce.



## How to work on a tree covered by a Tree Preservation Order

Good Tree management is absolutely important and at times work will be needed to be carried out.

It is illegal to cut down or damage a tree with a TPO however, if you want to gain permission to work on, prune or remove a tree which is protected by a TPO then you should follow the steps below:

- Obtain the relevant form from Ashford Borough Council
- Outline the intended work on this form;

On receipt of the application, the Local Authority has up to two months to make a decision.

It is important to clearly specify the work which you want to do and provide information that supports your case.



## What is their purpose?

The purpose of a TPO is to protect trees that provide significant amenity benefits to its local area. This form of protection is of importance in areas where trees are under threat. All types and species of trees can be protected by a TPO, but no species is automatically protected.

## How can you find out if a tree is protected?

To find out whether a tree is protected by a TPO you need to contact the local planning authority who will have the details of TPOs available. Planning permission and an ecology survey can also determine if TPOs on a specific site are present.

In our case this is Ashford Borough Council.

## WARNING

It is important to find out if any trees on your land have a TPO on them since a deliberate destruction or damage of a protected tree could lead to prosecution, resulting in enforcement action such as fines or a criminal record.

Find out more at:

[www.ashford.gov.uk/planning-and-development/works-to-trees-and-hedges/tree-preservation-orders/](http://www.ashford.gov.uk/planning-and-development/works-to-trees-and-hedges/tree-preservation-orders/)

# LOCAL AMENITIES



The Great Chart with Singleton Parish is well provisioned with local halls, COVID permitting they are all now back up and running for groups and events.

## SINGLETON VILLAGE HALL

In July 2021, when the Government allowed the opening of everything again, many hirers made use of the large spaces the facilities at Singleton Village Hall provide. It was good to see how the community in and around Singleton booked the halls for their events, meetings and the much needed gatherings of families and friends. August is usually a rather quiet month, but in 2021 it was one of the busiest months at the Village Hall, and the halls have continued to be in demand. We are mindful of the risks new variants of COVID-19 may bring, though unless announced otherwise by the Government, we can remain open and offer our facilities to our community (meetings and small gatherings for family and friends). On weekdays a few local groups offer regular classes at Singleton Village Hall for children and adults. Some have been meeting at the Hall for some time, but there are also some new groups that have been added to our weekly programme. A full list can be found on our website [www.singletonvillagehall.co.uk](http://www.singletonvillagehall.co.uk) Those groups that meet during daytime hours also have the luxury of being able to visit the café in the Extension Hall downstairs which opens Mon-Fri 8.00am-5.00pm. The café also offers drinks, cakes, treats and snacks to go.

## GREAT CHART PLAYING FIELDS AND BUXFORD PAVILION



It has been nice to see the Pavilion opened up once again to groups other than just outdoor sports. Ewenique the therapeutic craft group for those living with chronic illness is now back to using the main hall, and we have a new exercise class lined up for the new year from Frizzell Fitness. Frizzell Fitness will be hosting enjoyable fitness bootcamps, helping the community keep fit and healthy. Pilgrims FC, our resident football club are currently using the fields on the weekends, but will be back to mid week training once the evenings get a little lighter.

More painting, decorating and maintenance was carried out in December and January, then we hope to move on to some minor improvements which will make a big difference - such as improved outdoor lighting. If you are interested in hiring the pavilion for a fitness activity, meeting or event, please call 01233 427407 or email [bookings@greatchartplayingfields.org.uk](mailto:bookings@greatchartplayingfields.org.uk)

**Please be aware that due to the ongoing work to improve the quality of the football pitches for Pilgrims FC, there will no longer be any car boots held on the playing fields.**

## GREAT CHART VILLAGE HALL

Great Chart Village Hall, which has looked over the village of Great Chart since 1908, is now fully reopened to its regular user groups and event hires. It is the venue for the parish councils Pop Up Cafe on the second Wednesday of the month, and every other month it also hosts the Parish Council meeting, but is also a favourite with a number of other clubs and groups. The hall has a Facebook page at <https://www.facebook.com/Great-Chart-Village-Hall-134684416590425> and bookings can be made on 01233 610173.



# GROUP REPORTS

Due to coronavirus restrictions, many of our groups have not been running on a regular basis. We are looking forward to more reports in future issues, in the hope that they are full of activities that have been allowed to go ahead.

## 1ST SINGLETON SCOUTS GROUP

It's been another busy term for the group. Many of the beavers and cubs had an enjoyable morning at Lower Grange Farm sampling the different activities on offer including the climbing wall and archery, but the session highlight was definitely the zorb balls. Members from Ashford Astronomical Society inspired the cubs and beavers with space pictures during their talk and they discovered so much more about the stars and planets. The group marked Remembrance Day with a parade to the memorial at Great Chart, laying a wreath and holding a short reflection.



Beavers were visited by a guide dog with her owners and are in the process of raising funds for the charity. They constructed junk models as part of their builder badge, celebrated the Day of the Dead by icing biscuits and making masks and went on a litter pick in the nearby park using the parish council Community Heroes kit. This term activities for Cubs have included an evening hike around the locality and working on a range of tasks relating to money and currencies for the new money skills badge. Cubs took part in

the District's Monopoly Run around the town, following the clues and answering questions about the town's history and were delighted to be the only group that was invited to go down into the old jail inside Gould and Harrisons premises.

## 1ST GREAT CHART SCOUTS GROUP

We re-started our meetings last April, meeting outside for the first term due to covid restrictions in place at the time. We are now back to meeting face-to-face indoors in the Great Chart Village Hall. The Cubs have been very busy doing badges including Athletics, Environmental Conservation, Disability Awareness, First Aid, Pioneer, Global Issues and Road safety. We also did the Local Knowledge badge and we are very grateful to Councillor Ian McClintock for coming to talk to the Cubs and help them achieve this.

We have also done trips to the Warren, where we played wide games and sang songs around a glowstick fire, a hike, a trip to FlipOut and a trip to Lower Grange Farm where Cubs did go-karting and the cave bus. We led the annual Remembrance Sunday parade and attended the service at Great Chart Church. At our meeting on the Friday before this, the Cubs imagined it was 1940, looking at badges that were introduced to support the war effort, working in teams to do a problem-solving activity to defuse a bomb (made from an old cardboard box, a toilet roll and some coloured string!) and reflecting on why we take part in acts of remembrance.

We are currently working towards the International badge which will include building pyramids with K'Nex, the Great Wall of China using wooden bricks, the Tower of Pisa out of Lego and turning a Cub into the Statue of Liberty using green wallpaper, tissue paper and a torch! We are very fortunate to have a fantastic team of leaders. I am very grateful to Baloo, Bagheera, Kaa and Jamie, without whom none of this would be possible.

Our pack is currently full but we will have several Cubs leaving at Christmas so, if you have a child aged 8-10 who would like to join us, please contact me, Sally Gatherern, at [sallygatherern@aol.com](mailto:sallygatherern@aol.com) Akela, 1st Great Chart Cubs.



## SINGLETON WI GROUP



Singleton WI meets on the 1st Thursday of the month, from 7pm-9pm at the Singleton Environment Centre, Wesley School Road, TN23 5LW.

We are a friendly group of women and welcome new members and visitors. Feel free to come along to one of our meetings. We have a daytime and an evening book club. We are part of the Community Heroes Scheme and organise regular litter picks. We love to get out and about to special events and places of interest.

### Future meetings

Thursday 2nd February - Craft Session

Thursday 2nd March - Kent Wildlife Trust

Thursday 7th April - Easter Chocolate Bingo Night

Thursday 5th May - Emma Batten, local author of Historical Fiction

Thursday 2nd June - Queen's Platinum Jubilee

### Who is Who?

President: Hannah Morris

Tel: 07542 436 522

Vice-President: Sally Gathern

Treasurer: Annie Fahy

Secretary: Rebecca Khoo Email:

singletonwiekf@gmail.com

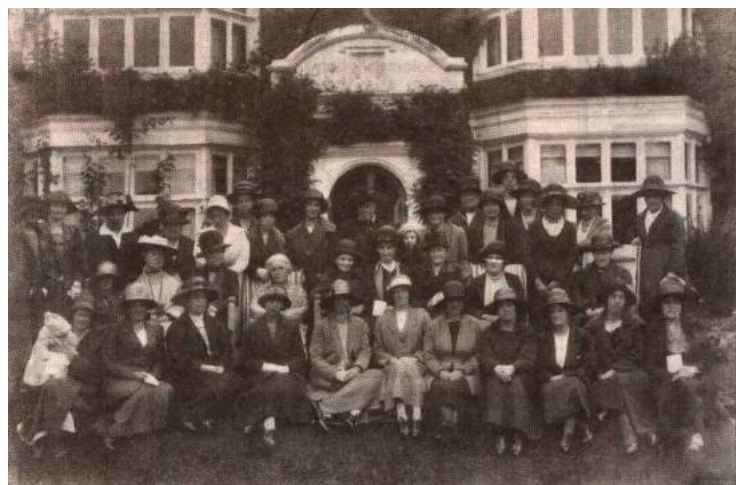
## GREAT CHART & GODINTON WI

Great Chart WI was founded on 2nd March 1921 and the first committee meeting took place at Godinton House on March 8th of that year. Things were very different in those days, especially in the ladies' attire as all members were beautifully turned out in dresses, coats or jackets with gloves and stunning hats as illustrated in photo accompanying this article. They were also addressed as Mrs or Miss and their surname rather than first names as is the case today, which obviously made a far more formal situation. We still have evidence of the original meetings as scribed in the minute book of the day and the ladies were seen to enjoy competitions, creative activities and talks including one about the new piece of kitchen equipment called a Gas Cooker !!!

As time went by, the meetings took place at Great Chart Village Hall with a thriving membership and continued to do so until sadly the numbers declined to a small group and despite the efforts of the President at the time, Sheila Spiers to maintain its original village identity, it was decided with the local Federation to enlarge Great Chart WI with Godinton WI on the 28th November 2013 and the meetings now take place at Godinton Village Hall.

During the interim years whilst still located in Great Chart, the ladies of the WI enjoyed many, many interesting pastimes, partaking in both local and National Federation activities, visiting no end of places of history & culture. Some members, over the years have spent educational time at the WI Denman college learning new skills whilst enjoying superb accommodation and hospitality, continuing with on-line sessions during the current pandemic situation. Alongside the regular monthly meetings, the membership can enjoy additional activities such as crafts of many kinds, Knit & natter sessions, involvement in local area Group WI competitions and currently maintain a successful darts team.

Obviously during the past year, owing to the ongoing Covid restrictions the activities and meetings have been curtailed but the members are looking forward to restarting meetings, in the near future and to rekindle friendships with other local WI's. We are proud to still be able to celebrate the Centenary of Great Chart WI later in 2021 and plan to plant a tree in Great Chart to commemorate the success of the organisation that began 100 years ago and is still part of the local community today.



# HILLCREST ALLOTMENTS



## HILLCREST ALLOTMENTS IN WINTER HIBERNATION

Here in the deep mid-winter, the parish allotments on Hillcrest are in virtual hibernation, awaiting the arrival of spring warmth, after which they will again burst into life.

However, for those of us who regularly visit our plots throughout the winter, there are a variety of benefits to be had. Firstly, despite what you might think, vegetables do grow quite happily during the cold months. Apart from brassicas (cabbages, Brussels, kale and swedes, for example), bizarrely it is salad crops that enjoy the cooler temperatures. Rocket, which will bolt (go to seed) at the drop of a hat in summer when it gets hot and dry, thrives in the winter, as do many varieties of lettuce and other salad leaves that you regularly pay a fortune for from the supermarkets.

Yet there are other benefits too from going to the allotment in winter. Experts now recognise that humans need regular contact with nature to maintain good mental health and, particularly during lockdown when there were no restrictions on working plots, many of us considered ourselves extremely fortunate to have an easily accessible bolthole where we could escape from the rigours of everyday life.

Unsurprisingly, the demand for allotments has increased exponentially and we now have a long waiting list. However, if you do like the idea of growing your own, we will happily add you to the waiting list and get in contact when a plot becomes available. Many of our plot holders often start out growing vegetables such as tomatoes or runner beans in their back gardens, find they really enjoy it, but want more space to experiment with a wider variety of plants. That's how they come to us.

Prices are kept deliberately low - £22.50 to £32.50 per annum depending on plot size – to encourage as many people as possible to join in.

On the subject of outdoor tomatoes, I'm sure many of you were devastated last summer to see your entire crop wiped out mid-season. Stems blackened and fruit became discoloured as blight destroyed virtually all uncovered tomatoes across southern England. It used to be possible to spray against this disease, but things like Dithane 945 and Bordeaux Mixture are no longer permitted to amateur gardeners.

So, what can you do if you still want to grow tomatoes? A whole new raft of blight resistant varieties have been developed. We're still in the early days, but look out for Crimson Crush, Crimson Cherry, Mountain Magic and Primabella all of which will "resist" blight, which means that while they'll develop blight symptoms these won't then spread to the rest of the plant, so you will get a crop. I had, for example, a Mountain Magic plant that was still producing blight free tomatoes up to the end of November. However, don't plant tomatoes outside until at least mid-May, since frost in Ashford can occur right up until about the 15th and kills tomato plants stone dead.

We continue to look for help from anybody that knows anything at all about setting up a thriving pond environment (and our pond is several metres across, so we are talking big!) and also seek somebody with knowledge on how to create a British wildflower area. If that's you and you want to volunteer your services, do please contact the parish clerk on [theclerk@greatchartsingleton-pc.gov.uk](mailto:theclerk@greatchartsingleton-pc.gov.uk)

# CLUBS AND GROUPS



**Please be aware that times and dates may change due to coronavirus restrictions**

**1st Great Chart Scouts Group** - Contact Dave or Sally Gathern 01233 633966  
Beavers (6-8.yo) - Friday 5-6:30pm  
Cubs - (8-10.5yo) - Friday 6:30-8pm

**1st Singleton Scouts Group** - Contact Jill Lane 01233 641773/ 07799 886549  
Beavers (6-8yo) Wednesday 5:15-6:30pm  
Cubs (8-10.5yo) Wednesday 6:30-8pm

## **Great Chart & Godinton WI**

Secretary Janet Goodwin: 01233 332510  
Committee Member Pam Grigg: 01233 878013  
19:30 on 3rd Wednesday of the month at Godinton Village Hall

## **Singleton WI**

Meeting at Singleton Environment Centre on the first Thursday of the month. Contact Hannah on 07542 436522, [singletonwiekf@gmail.com](mailto:singletonwiekf@gmail.com) or @SingletonWI

## **Ashford Community Woodland**

[ashfordcommunitywoodland@hotmail.co.uk](mailto:ashfordcommunitywoodland@hotmail.co.uk)  
[www.ashfordcommunitywoodland.org](http://www.ashfordcommunitywoodland.org)

## **Repair Cafe Ashford**

Email: [lenchitt@yahoo.co.uk](mailto:lenchitt@yahoo.co.uk)  
1st and 3rd Wednesday of the month at SEC

## **Eco Kids**

Thursdays & Fridays 10-11:30 at Singleton Environment Centre. Email Jenny on [ecokidssec@gmail.com](mailto:ecokidssec@gmail.com)

## **Ashford Volunteer Centre**

Telephone: 01233 665535  
Email: [contact@ashfordvc.org.uk](mailto:contact@ashfordvc.org.uk)  
Website: <https://ashfordvc.org.uk>

**Speed Watch.** Contact area co-ordinator Garry Parry 01233 640110 [garry@whp.co.uk](mailto:garry@whp.co.uk)

**Paek Ma Taekwondo** - contact Master Geoff 6th Dan 07836 621060 at SVH.  
Tuesday 5:30-6:30pm /6:30-8 Juniors and Seniors  
Thursday 6:30-8pm Juniors

**Dream Dragons Theatre** - Wednesdays 7-10pm at SVH. Contact 01233 668767 or [www.dreamdragons.co.uk](http://www.dreamdragons.co.uk)

**Stardust Studios** - Children's dance classes at SVH. Contact Natalie Kitts 01233 625786/ 0984956 or [info@starduststudios.co.uk](mailto:info@starduststudios.co.uk)

## **Flora the Singleton Giant.**

Contact Peter 01233 610241  
[peter@singleiongiant.org.uk](mailto:peter@singleiongiant.org.uk)

## **Great Chart Cricket Club**

[www.greatchartcc.co.uk](http://www.greatchartcc.co.uk)

**Ashford Concert Band.** Thursdays 7-8:30pm at John Wesley School  
[www.ashfordconcertband.co.uk](http://www.ashfordconcertband.co.uk)  
[info@ashfordconcertband.co.uk](mailto:info@ashfordconcertband.co.uk)

## **Grace Fellowship at Singleton Road**

[www.gracefellowship.org.uk](http://www.gracefellowship.org.uk)

## **Friends of Singleton Lake**

Website: [www.friendsofsingletonlake.co.uk](http://www.friendsofsingletonlake.co.uk)

**St Mary's Great Chart & Singleton.** Sunday services - 9:30am at St Mary's Great Chart and 11am at St Mary's in SVH. Contact Libby Varley 01233 620371. [office@stmarysgreatchart.org](mailto:office@stmarysgreatchart.org)  
[www.stmarysgreatchart.org](http://www.stmarysgreatchart.org)

**Pilgrims Football Club** - Contact Kyran Wilford 07984 352008 [kyran@pilgrimsfc.co.uk](mailto:kyran@pilgrimsfc.co.uk)





# USEFUL INFORMATION



## VENUE CONTACT DETAILS

### Singleton Village Hall

**Tel:** 07887 575647

**Email:** [bookings@singletonvh.co.uk](mailto:bookings@singletonvh.co.uk)

### Great Chart Village Hall

**Tel:** 01233 610173

**Email:** [greatechartvillagehall@yahoo.co.uk](mailto:greatechartvillagehall@yahoo.co.uk)

### Great Chart Playing Fields Buxford Pavilion

**Tel:** 01233 427407

**Email:** [bookings@greatechartplayingfields.org.uk](mailto:bookings@greatechartplayingfields.org.uk)

### Singleton Environment Centre

**Tel:** 01233 343885

**Email:** [centremanager@singletonenvironmentcentre.org.uk](mailto:centremanager@singletonenvironmentcentre.org.uk)

## EMERGENCY CONTACT DETAILS

William Harvey Hospital  
**01233 633331**

Kent Highways Service  
**03000 418181**

Environment Agency  
**03708 506 506**

Environment Incident Reporting  
**0800 80 70 60**

South East Water  
**0333 000 0001**

Floodline  
**0345 988 1188**

UK Powernet  
**0800 029 4285**

Power Cut  
**0800 31 63 105**

Samaritans  
**116 123** email [jo@samaritans.org](mailto:jo@samaritans.org)

Kent County Council - Enquiries - Social Services  
**03000 41 41 41**

Emergency Services **999**  
Press **55** on a mobile if unsafe to speak  
Text **60066** if deaf/hard of hearing

Kent Police - non emergency numbers  
Call **101** or use **Live Chat** at [www.kent.police.uk](http://www.kent.police.uk)  
Call **111** for medical non-emergencies

## OTHER INFO

### Allotments

Contact the Parish Clerk on 01233 616923  
[theclerk@greatechartsingleton-pc.gov.uk](mailto:theclerk@greatechartsingleton-pc.gov.uk)

### Dog Warden Colin Leek

Tel: 01233 330340

Email: [colin.leek@ashford.gov.uk](mailto:colin.leek@ashford.gov.uk)

### Mobile Library

Aske's Court: Friday 14:55-15:25

Knoll Lane: Friday 15:45-16:15

Coronation Drive: Saturday: 10:55-11:25



# BOROUGH & COUNTY COUNCILLOR CONTACT INFORMATION



## ASHFORD BOROUGH COUNCILLORS

Weald Central Ward Councillor:  
Jessamy Blanford

Tel: 01233 840050  
Email: [jessamy.blanford@ashford.gov.uk](mailto:jessamy.blanford@ashford.gov.uk)

Singleton East Ward Councillor:  
Bill Barrett

Tel: 07449 454044  
Email: [bill.barrett@ashford.gov.uk](mailto:bill.barrett@ashford.gov.uk)

Singleton West Ward Councillor:  
Kalysha Howard-Smith

Tel: 07586 332504  
Email: [kalysha.howardsmith@ashford.gov.uk](mailto:kalysha.howardsmith@ashford.gov.uk)

Washford Ward Councillor:  
Neil Shorter

Tel: 07827 253400  
Email: [neil.shorter@ashford.gov.uk](mailto:neil.shorter@ashford.gov.uk)

## KENT COUNTY COUNCILLORS

Councillor  
Charlie Simkins

Tel: 01233 756705  
Email: [charlie.simkins@kent.gov.uk](mailto:charlie.simkins@kent.gov.uk)

Councillor  
Dirk Ross

Tel: 07776 270416  
Email: [dirk.ross@kent.gov.uk](mailto:dirk.ross@kent.gov.uk)

## COUNCIL CONTACT DETAILS

Ashford Borough Council

Tel: 01233 331111  
Web: [www.ashford.gov.uk](http://www.ashford.gov.uk)

Kent County Council

Tel: 03000 414141  
Web: [www.kent.gov.uk](http://www.kent.gov.uk)

## PARISH COUNCIL STAFF

Parish Clerk  
Aniko Szocs

Tel: 01233 616923  
Email: [theclerk@greatchartsingleton-pc.gov.uk](mailto:theclerk@greatchartsingleton-pc.gov.uk)

Assistant to the Clerk  
Paula Cowperthwaite

Tel: 01233 616923  
Email: [paula.cowperthwaite@greatchartsingleton-pc.gov.uk](mailto:paula.cowperthwaite@greatchartsingleton-pc.gov.uk)

Parish Steward  
Peter Walkden

Email: [theclerk@greatchartsingleton-pc.gov.uk](mailto:theclerk@greatchartsingleton-pc.gov.uk)

Assistant Parish Steward  
Robert Heath

Email: [theclerk@greatchartsingleton-pc.gov.uk](mailto:theclerk@greatchartsingleton-pc.gov.uk)



# PARISH COUNCILLOR CONTACT INFORMATION



## CHILMINGTON WARD

Cllr Ian  
McClintock

Tel: 07919 278828  
Email: [ian.mcclintock@greatchartsingleton-pc.gov.uk](mailto:ian.mcclintock@greatchartsingleton-pc.gov.uk)

## GREAT CHART WITH SINGLETON NORTH WARD

Cllr Paul  
Tate

Tel: 07850 082023  
Email: [paul.tate@greatchartsingleton-pc.gov.uk](mailto:paul.tate@greatchartsingleton-pc.gov.uk)

## SINGLETON EAST WARD

Cllr Katrina  
Alexander

Tel: 07791 632493  
Email: [katrina.alexander@greatchartsingleton-pc.gov.uk](mailto:katrina.alexander@greatchartsingleton-pc.gov.uk)

Cllr Janet  
Sullivan

Tel: 01233 645400  
Email: [janet.sullivan@greatchartsingleton-pc.gov.uk](mailto:janet.sullivan@greatchartsingleton-pc.gov.uk)

Cllr Malcolm  
Wiffen

Tel: 01233 635016  
Email: [malcolm.wiffen@greatchartsingleton-pc.gov.uk](mailto:malcolm.wiffen@greatchartsingleton-pc.gov.uk)

Cllr Kyran  
Wilford

Tel: 07984 352008  
Email: [kyran.wilford@greatchartsingleton-pc.gov.uk](mailto:kyran.wilford@greatchartsingleton-pc.gov.uk)

## SINGLETON WEST WARD

Cllr Peter  
Barker

Tel: 01233 610241  
Email: [peter.barker@greatchartsingleton-pc.gov.uk](mailto:peter.barker@greatchartsingleton-pc.gov.uk)

Cllr Yolanda  
Barker

Tel: 01233 610241  
Email: [yolanda.barker@greatchartsingleton-pc.gov.uk](mailto:yolanda.barker@greatchartsingleton-pc.gov.uk)

Cllr Geoffrey  
Darvill

Tel: 01233 642357  
Email: [geoffrey.darvill@greatchartsingleton-pc.gov.uk](mailto:geoffrey.darvill@greatchartsingleton-pc.gov.uk)

Cllr Sally  
Gathern

Tel: 07815 803862  
Email: [sally.gathern@greatchartsingleton-pc.gov.uk](mailto:sally.gathern@greatchartsingleton-pc.gov.uk)

## WASHFORD WARD

Cllr Tom  
Ackrill

Tel: 07780 470668  
Email: [thomas.ackrill@greatchartsingleton-pc.gov.uk](mailto:thomas.ackrill@greatchartsingleton-pc.gov.uk)

