



# Great Chart with Singleton Parish Council

Annual Report 2021-2022

## Community events



## Singleton Lake



## Singleton Environment Centre



## Great Chart



# Contents

<b>FOREWORD</b> .....	
<b>CHAIR'S ANNUAL REPORT</b> .....	
<b>CLERK'S ANNUAL REPORT</b> .....	
<b>AMENITIES OPEN SPACES AND ENVIRONMENT COMMITTEE ANNUAL REPORT</b> .....	
<b>CLLR BILL BARRETT</b> .....	
<b>CLLR DIRK ROSS</b> .....	
<b>ANNUAL REPORT FROM PCSO 59869 STEVENS</b> .....	
<b>GREAT CHART VILLAGE HALL</b> .....	
<b>TOKE AND STREETERS ALMSHOUSE CHARITY</b> .....	
<b>GREAT CHART PRIMARY SCHOOL</b> .....	
<b>BEAN FUND</b> .....	
<b>SINGLETON ENVIRONMENT CENTRE</b> .....	
<b>FLORA THE SINGLETON GIANT</b> .....	
<b>GREAT CHART AND GODINTON WI ANNUAL REPORT</b> .....	
<b>ST MARY'S GREAT CHART WITH ST FRANCIS CHURCH, CRYOL ROAD</b> .....	
<b>FINANCE REPORT</b> .....	
<b>INDEPENDENT AUDITOR'S COMMENT</b> .....	
<b>GRANTS ALLOCATED IN 2021-2022</b> .....	
<b>EARMARKED AND RESERVED FUNDS</b> .....	
<b>YEAR END ACCOUNTS</b> .....	
<b>BUDGET 2021-2022</b> .....	
<b>BANK RECONCILIATION</b> .....	
<b>PARISH COUNCIL CONTACTS</b> .....	
<b>PARISH COUNCIL STAFF AND CONTACT DETAILS</b> .....	



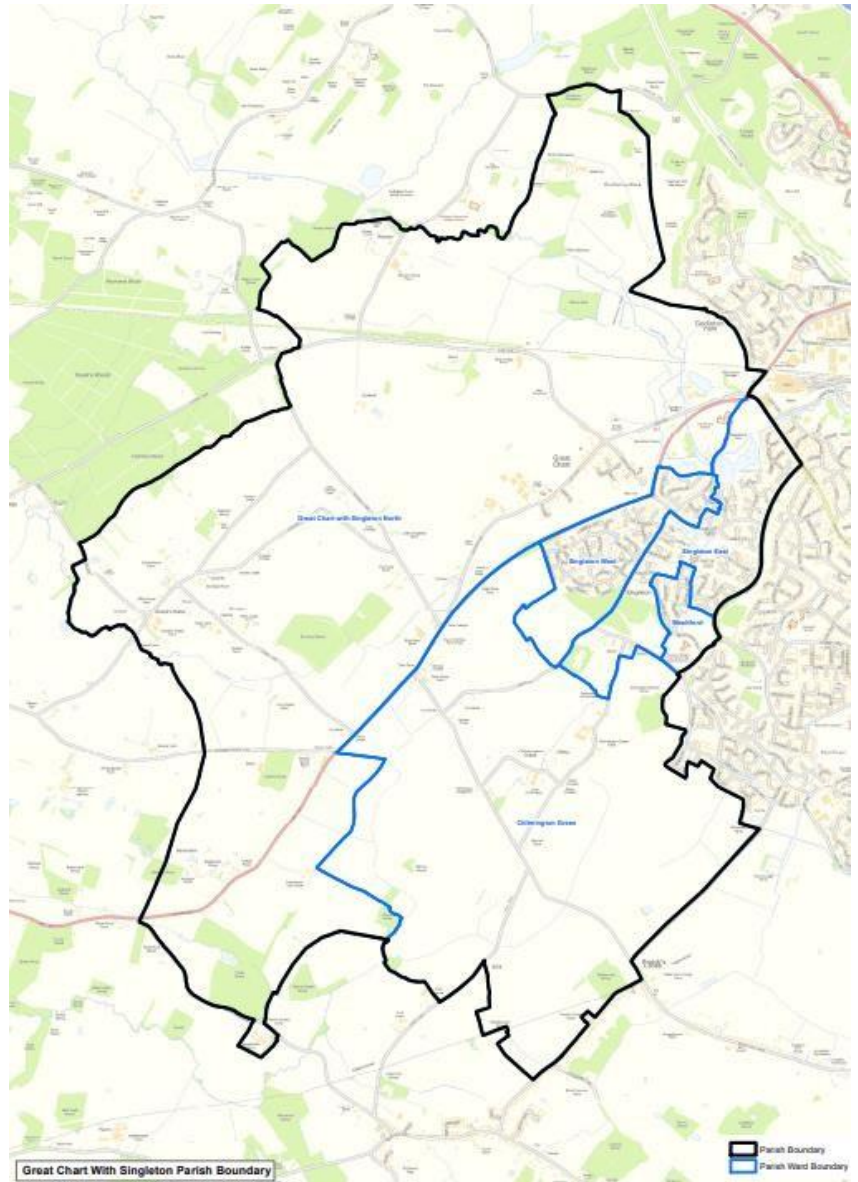
LOCAL COUNCIL  
AWARD SCHEME  
QUALITY

# Foreword

Located on the south-west side of Ashford, Great Chart with Singleton Parish is home to 6801 residents (2011 Census)<sup>1</sup>. The parish borders several other parishes; Betersden to the west, Hothfield to the north, Kingsnorth to the south and Shadoxhurst to the southwest. On the east is South Ashford which is currently an un-parished area. The Parish Council works in close partnership with neighbouring parishes as well as Ashford Borough Council and Kent County Council to improve the area for its residents.

The Parish Council is proud to report that 2021-22 has been a productive year. For a second year running the parish stewards have been cutting the grass on parish owned open spaces, as well as maintaining our many play areas. The parish council held several community events and some of these, like the Scarecrow Trail, have become a regular, annual feature. In addition, the parish has seen the implementation of a 20mph speed limit from Hoxton Close, through Running Foxes Lane to Cuckoo Lane. The council is also pleased to have been able to resurface the footpath adjacent to Singleton Village Hall.

This report is a good opportunity to look



back on the past year's activities, and begins with reports from the Chair and Clerk, followed by those of your Borough and Kent County Councillors. The report will include an overview of the parish's finances and provide a summary of the activities of some of our local clubs, societies, and organisations.

You can view the large [map](#)

## 1 GREAT CHART WITH SINGLETON PARISH

<sup>1</sup> Ashford Borough Council Yearbook



## Chair's Annual Report

Although I found myself having to stand in for the Chair in my capacity as Deputy Chair a few times in the last year, I was nonetheless surprised to be voted into the Chairs' role at our first parish council meeting of the 2022-2023 financial year, and consequently it falls to me to write this year's Chair's Annual Report!

From an historical perspective I must mention that it's easy to forget that we continued to endure various Covid restrictions during 2021 and it was only as we moved into 2022 did the country start to return to 'normal'.

So, what have we been up to?

The waiting list for one of our allotments (run by the Barrow and Spade Brigade) is long, with an estimate that it may take as long as five years to reach the top! We have been able to increase the area under cultivation following the diversion of the public footpath that ran immediately adjacent to the allotments. It turned out that the footpath was in the wrong place and moving it to its correct location would release enough land to add a further eight or ten plots. Through the good offices of our Parish Clerk, a loan was obtained to fund not only a new fence for the additional plots, but a completely new perimeter fence around the whole site, replacing the old wooden posts with a more secure, modern, metal fence.

At the Singleton Environment Centre, the two-storey extension was completed (following significant, covid related delays) and we held a grand opening, with Heather Hayward, Member for Roman ward, cutting the ribbon. It was Heather's help that led to the release of the s106 money that we used to build it.

As fewer restrictions applied to outside activities, our Parish Stewards, Peter, and Rob, were able to continue working around the parish, often providing a 'quick-fix' solution for urgent issues which the borough or the county could take weeks to resolve.

We've undertaken a major refurbishment at Cuckoo Park (opposite John Wesley School), replacing the old gym equipment and added an all-weather playing surface to replace the grassed basketball/football area. There remain some teething issues which are working to resolve, but the project seems to have been well received!

Behind all of the Parish Council's activities sits our Clerk, Aniko Szocs, whose responsibility it is to guide the council from a legal perspective. Ani is also our Responsible Financial Officer (RFO) and takes care of the money we raise from you in the precept. Without Ani we would not be the council we are, and she works exceptionally hard to make your parish one of the best in Kent! We also have a Deputy Clerk and RFO, Paula, who supports Ani in many areas, but notably also edits and publishes the Parish Newsletter.

The early part of the year marked the 70<sup>th</sup> Anniversary of HM the Queen's accession to the throne, and the council decided it would be important to mark this unique event.

Jubilee Coins



LOCAL COUNCIL  
AWARD SCHEME  
QUALITY



*Figure 1 Pupils of John Wesley School with their Jubilee Coins*

To do this, we chose to present children at each of the parishes' four primary schools (Great Chart, John Wesley, Chilmington Green and Wyvern) with a commemorative medal.

Sadly, the latter part of the year saw Her Majesty's passing and the transition from a Queen to a King, Charles III. Let us hope his reign will be as successful as his Mother's!

**Malcolm Wiffen,**

**Chair**

# Clerk's annual Report

## Welcome

Welcome to the annual report of the parish council. The report gives us an opportunity to reflect on the year behind us and to see where we are heading in the future. Hopefully, this summary of 2021-2022 will give you a good overview of the financial year and the council's activities.

## The team

Since joining in July 2019 Paula Cowperthwaite progressed from Assistant to the Clerk to Deputy Clerk, still working on a part time basis. She has successfully completed the Introduction to Local Council Administration and the Certificate in Local Council Administration Qualification.

The Parish Council Stewards continue to work around the parish, one working 25 and the other 15 hours per week.

Kent County Council Community Warden Scheme sadly came to an end in our parish in 2019 but recruitment for a new warden is currently in process. The Warden who will be appointed, in addition to Singleton and Great Chart, will cover two more areas including Stanhope and Kingsnorth.

Catherine Stevens is the local Police Community Support Officer. She is actively engaging with local matters and supports community events.

These events provide an opportunity for residents to ask questions or to raise concerns in a friendly environment. Her dedication and hard work make a huge difference in the parish. While her area of responsibility has been increased the level of support from Catherine remains the same.

## Improvements around the parish

The Parish Council had another busy year making improvements in the area. You might have noticed our new logo which we hope will help residents identify communications that come from the parish council. It took a long deliberation, but the final logo does really capture the sense of the parish and brings the old and the new together.

The Parish Stewards have been working hard maintaining the play areas, including painting the benches, and treating wooden structures to increase their longevity.

The Parish Council has also been working in partnership with Ashford Borough Council (ABC) to ensure that all ground maintenance in the parish was completed to a high standard.

The parish stewards have cleaned all the street name plates in the parish and reported all broken ones to ABC who will, in due course, repair or replace them.

The Parish Council has been working with Kent County Council on the introduction and implementation of a new 20mph speed limit starting from Hoxton Close, through Running

Foxes Lane to John Wesley Road. We hope the reduction of the limit will encourage responsible driving and improve safety. The Parish Council would like to thank pupils from Great Chart and John Wesley Primary Schools for taking part in a poster design competition. The winning designs are displayed outside the schools and all other entries can be found on our social media.

The Parish Council has started an initiative to create its first community garden in Heron Walk. If the project proves to be successful, it will be replicated in other parts of the parish.

The Parish Council is very pleased to have been able to resurface the entire path adjacent to Singleton Village Hall. We hope the new path helps residents to get safely from A to B.

Thanks to Ashford Borough Council several new bins were installed in the parish. We hope the addition of new bins will help residents to dispose of their litter appropriately.

### **Community engagement events**

The Parish Council held and supported several events throughout the year. The Parish Council was very pleased to participate in The Big Lunch event which now has become an annual event. These are mostly held at Singleton Environment Centre where a barbeque is provided by the parish council along with fun craft activities for children.

One of our regular events is bike marking; residents can bring their bicycle and have it security marked. The event is supported by the PCSO and last year we were lucky to have the Police Cadets and Peter New, Neighborhood Watch Coordinator helping too.

The Pop-Up Café is a monthly event for residents to enjoy a slice of homemade cake along with a nice cup of tea! The Pop-Up Café is in its third year and has continued to grow in popularity. The event is not just a social occasion but an information hub where residents can find out about local services available to them. Our PCSO is always present so residents can ask questions or raise issues. I would like to take this opportunity and thank everyone who supported this wonderful project, parish councillors and PCSO for attending, and most importantly to the wonderful volunteers who help in setting up the café and Singleton Environment Centre for providing delicious cakes for each event. During one of the sessions, we were able to belatedly celebrate the birthday of the Great Chart resident that has lived in the village for the longest time. We would like to thank her for her support for the parish council.

We have seen the return, due to popular demand, of the Halloween Scarecrow Trail. This event gives residents the opportunity to create and display a Halloween Scarecrow for the community to enjoy. A trail links the scarecrows and residents can follow the trail and decide which scarecrow they think is the best. The winner is awarded a small prize!

The parish council has organised several training sessions on how to use a defibrillator. More are planned to give everyone the opportunity to learn how to use one.

Residents still list littering and dog fouling as two of their main concerns. The parish council held a weeklong campaign to raise awareness of the issue and inform residents of the dangers dog fouling can present, especially to children.

## Thank you

I would like to thank all the members of the Parish Council for their hard work during the past year. Every Councillor brings different skills and qualities that help the council achieve its objectives. I would also like to thank the Council employees for their hard work and dedication.

**Aniko Szocs**  
Parish Clerk & RFO





# Amenities Open Spaces and Environment Committee Annual Report 2021-22

Despite the challenges of covid we have managed to press ahead with many of our projects this year.

**Meadow Creation** – we have liaised closely with Aspire who have been very supportive of our aims. We have selected green spaces that will be left unmown, creating more natural green spaces in the parish that will enhance and support biodiversity. These areas have been labelled to show they're part of this project and have not just been left untended. Feedback from local people has been very positive.

**Bus-shelter rooftops** – We put this on hold due to the unexpectedly high cost, but we are still looking into grants to secure funding to do this.

**Allotments** – Demand for allotments is high, and rising, as the physical and mental health benefits (and the fact that it's enjoyable!) become more widely appreciated. In light of our own growing waiting list, we have investigated several sites to provide more allotments and have now cleared some land adjacent to the current site which should accommodate a further 8-10 plots. We will always try to find enough sites to meet demand, but it isn't an easy process as parking and the accessibility and suitability of sites all need to be considered.

**Community Gardens** – We identified an area with raised beds where local people might like to create a community garden. We consulted the local residents and asked them if, and how, they would like to be involved. The response was very encouraging, so we are working with the residents to clear the beds and plant a mix of flowers, trees, fruit and vegetables. Obviously, what is planted will need to be suitable for the soil and the beds, but the idea is very much for the residents to choose what they want to see planted there and to get involved with the ongoing weeding and watering etc. We hope this project can be expanded to other areas, building bridges between different generations and groups, and giving people a chance to be directly involved in their community.

**The North Field** – We are still hoping to create an area of meadow, along with a pond, here. After a very promising meeting with Kent Wildlife trust, we failed to hear from them so turned to the Bumblebee Conservation Trust instead. After several meetings and a walkabout across the parish with members from the trust, we were able to explain what we were trying to achieve: more variety in our green spaces to enhance and support biodiversity in our area. We are especially keen to support pollinators and insects and their advice on how to do this was invaluable. They have sent us a plan of action which we will take forward this coming year, not only in the North Field but across the parish.

**Planters** – As part of the plan to support biodiversity, we want to install planters across the parish. We have received several suggestions from residents for where to put these. Such suggestions are very welcome; we very much want to work with residents. Choosing the materials to make the planters has been more difficult than anticipated as we try to keep costs down but, at the time of writing, we are hopeful that we are about to have planters made.

**Wooden Horse** – At the request of the parish council, ABC agreed to employ Stevenson Brothers to renovate the horse. This work has now been completed.

**Pesticide use** – Our stewards no longer use any kind of glyphosate-based chemical weedkillers, and we are in discussions with Aspire to do likewise in our parish. Aspire have shown a genuine willingness to work with us and help us become pesticide-free. Faversham Town Council has already achieved this and were able to give us, and other councils, useful advice at a recent environment conference.

**Our carbon footprint** – We have been looking at ways that we might be able to reduce this. For example, we have been looking at the possibility of installing electric vehicle charging points in the parish. This is a complicated and costly process but one we are keen to investigate. We have also considered the possibility of changing our stewards' vehicles for electric ones. While the cost is currently too high for us to justify, this remains an ambition.

**Trees** – We have planted many trees and hedges around the parish. To emphasise and explain the importance of trees, we ran an art competition, asking residents to paint, draw or photograph a favourite tree, and we had a special feature, all about trees, in our magazine. We would like to create a 'tree trail' across the parish whereby residents can do a guided walk, from tree to tree, with information about the trees included available by each tree and maybe online, too.

**Cuckoo Park** – Maintenance work has been done here, along with the installation of a new, all-weather surface for basketball and other ball games.

**Cllr Sally Gathern**

**Chair- Amenities, Open Spaces and Environment Committee**

**Cllr Bill Barrett**

Dear Residents,

The last year has been a difficult year for many and just when the major effects of Covid have begun to subside the war in Ukraine began. A humanitarian disaster for the Ukrainians, and an economic headache for the UK, with increased energy costs. Despite these events good things have been happening in the Ward of Singleton East and I have been trying my upmost to help the groups and charities in and around Singleton that make our community worth living in.

I have donated my grant monies to various good causes to improve the community. Firstly, before Christmas I gave £300 to the Gateway Church towards a project to make sure disadvantaged children all received at least one decent Christmas present on Christmas morning. I gave £250 to the Ashford Community Woodland volunteers to enable them to purchase tools to help continue their good work upkeeping the woodland at the top of Singleton Hill. And I contributed £300 to the clearance of a patch of land outside Great Chart School which was then planted with spring flowering cherry trees to make it more visually attractive to the children and parents.

I have worked in conjunction with Great Chart Parish Council over the last year in regards numerous projects like the refurbishment and replanting of dilapidated planters at Heron Walk, to refurbishment of the Singleton Lake Car park and North Field. And at Christmas myself and my

wife attended a carol service by the Salvation Army at Askes Court, which was both fun and heartening, as well as donating £200 to their Residents Group to continue the good work it undertakes.

At Singleton Lake it has so far been a quiet and peaceful year, with the Public Space Protection Order (PSPO) working to prevent night-time fishing, drinking and damage to the natural habitat. I have worked closely with Catherine Stevens, our local Police Community Support Officer (PCSO) to make sure the lake is patrolled regularly alongside the Singleton Centre and other areas within the ward.

In regards my other council work I have continued to conduct my work as the Chairman of the Climate Change Advisory Committee which is leading the charge to make Ashford Borough Council's estate Carbon Neutral by 2030. And I have also continued to work with KCC over town centre repairs and refurbishments, as well as general clean-up work with ABC officers in regards litter, graffiti and dilapidation. All in all, it has been an interesting and rewarding year since my last report. Please do be in touch if there is anything I can help you with.

Regards

Bill Barrett.

Email: [Bill.barrett@ashford.gov.uk](mailto:Bill.barrett@ashford.gov.uk)

**Bill Barrett**  
**Singleton West Ward**

## Cllr Dirk Ross



I was elected by our community in May 2021 and have completed just over a year being a county councillor.

For me, it's a huge privilege to be a local representative in the very area I was brought up in when I moved from London in 1982.

My parents still live here so have 40 years of knowledge and understanding.

I know the area very well and have seen the transformation into a thriving ward that is part of Ashford but has its own local identity.

I cover seven ABC wards and Singleton East falls within my division. Attending many parish council meetings too.

Though due to proximity of Great Chart and Chilmington next door I take an interest as many matters cross over – issues have no boundaries. What affects a road or group in another ward can affect our area so best to be involved.

I get involved where I can champion good causes, support local groups/charities, visit schools and community events to raise awareness, fundraise, and congratulate those people and children who enhance our lives through hard work.

Since being elected I have achieved some good successes on road improvements, road safety schemes, removing graffiti, planning applications, improved lighting and tackled anti-social behaviour around south Ashford.

Assisting parents with school places criteria to safer areas around schools – parking is still an issue at peak times.

Listening to local views and offering sound advice to find solutions to problems or issues that weren't tackled in the past.

Working with all levels of local government plus the police to make a difference on matters important to you.

I have supported some local causes, including the superb facilities at the Singleton Environment Centre which has proved such a success for the local community and has attracted many people. Scout groups to elderly housing groups which offer a haven to live.

Another very busy year ahead where I will endeavour to carry on doing my part with connected parties to make our area better for residents, visitors, and nature for which we are fortunate to have so much including the lake.

If you know of any small group / charity that needs assistance, then email me for an initial discussion.

Email: [dirk.ross@kent.gov.uk](mailto:dirk.ross@kent.gov.uk)

**Cllr Dirk Ross**

**Kent County Council Member**



Kent  
Police

## Annual Report from PCSO 59869 Stevens

The last year has been another busy period for the Police Community Support Officers in Ashford. The number of wards that I deal with has increased, although the responsibility for this is now shared between myself and PCSO Oli Welch. Over the last few months, our workload has been dominated by neighbour disputes, anti-social behaviour, and nuisance vehicles. We have been liaising with partners such as ABC, Neighbourhood Watch, a variety of housing associations, private landlords and the parish council, as well as different teams within Kent Police to help solve these issues. Between us, we are working hard to tackle anti-social behaviour and other matters that are brought to our attention.

A new two-way engagement tool, My Community Voice (MCV), has been introduced by Kent Police over the last year. MCV provides real-time messages directly from police officers and PCSOs about matter that may affect you or your community. If you would like any more information regarding this, then please visit [www.mycommunityvoicekent.co.uk](http://www.mycommunityvoicekent.co.uk)

This year, Ashford Police have also introduced regular community engagement events. Every three months, PCSOs and / or police officers will attend designated locations in the borough so that residents can come along and have a chat and express any concerns that they may have. The dates and times of these will be made know nearer the time via Kent Police Twitter / My Community Voice and through parish councils. The next engagement sessions will take place in October.

Kent Police are currently going through a review of Neighbourhood Policing. This review aims to future-proof our current Neighbourhood Policing Model as well as identify opportunities to continually improve the service we already provide. Please be reassured, whatever the future brings, Kent Police will continue to deliver the best service that it can to serve and protect the people within its communities.

**Catherine Stevens PCSO 46059869**

### Great Chart Village Hall

Like all village and community halls, Great Chart Village Hall had been affected by the lockdowns and restrictions due to corona virus. These created problems for people and organisations that had booked the hall for regular activities, parties, and weddings to name but a few. We are grateful for their return and are pleased to welcome back regular bookings.

The kitchen should now be able to be used again and this has proved to be very popular with hirers requiring catering facilities for party bookings at the weekend, helping to maintain and increase the number of weekend bookings. This has had the beneficial effect of allowing the trustees to maintain very reasonable hiring fees for local community groups using the hall.

During the enforced closure the trustees were busy tackling maintenance and updating tasks to ensure the hall was welcoming when it returned to normal use. The boundary fence on the car park side of the hall was in a poor, sad state and after several quotes we have had it replaced with a good picket fence, making it secure for children's activities/parties.

The main and secondary stage curtain tracks have been repaired several times and have now reached the end of their useful life. The trustees have agreed that a company that specializes in stage facilities is to replace them this year. A new fire proofed, front stage curtain has been ordered, as the existing curtain has been repaired several times is now starting to disintegrate. The secondary curtain is to be washed and treated to make it fireproof before rehangng.

The next major project is to have the hall floor renovated again as it appears to be suffering from dampness. On investigation it would appear to be a combination of trapped moisture aggravated by a cleaning/antibacterial solution being used during the pandemic. The advice is to have the surface stripped back and wax finish applied that will allow the wood to breath and be cleaned with a special product to maintain its appearance, though this may require more maintenance.

The finances are looking secure, we are starting to be able to build up some reserves, as with any old building repairs tend to be more expensive to rectify.

We have been fortunate to receive grants to maintain the hall throughout the pandemic to ensure it can continue to serve the community in future.

I would like to thank my fellow Trustees, the parish council and ABC, along with the local community for their continued support in allowing this local village hall to be so successful.

**Paul Tate**  
**Chairman GCVH**

## **Toke and Streeters Almshouse Charity - Chairman's Report 07/2022**

There are not any current reports of issues from our tenants, and they seem to have been happy since our last AGM. The Trust has not needed to pay for any unexpected maintenance costs for the properties. We have purchased a new field gate, kindly organised by Paul Tate, which has now been fitted by Barry (resident of No 2) and me. Barry has since treated the gate with a wood stain preservative, and I have thanked him for his assistance with this. The tenant in No 1 does not wish to have the lino fitted to his utility room. I therefore propose that this is left until such time as the property is empty. The tenant in No 3 does not wish to have the disruption of having a new bathroom fitted. I therefore propose that this is also left until such time as the property is empty. There have been further issues with the main sewer drains since the last AGM. The last time it was blocked the resident of No 2 cleared it. However, I have asked him to notify the trustees if there are further blockages such that we can get Southern Water to undertake the works, which is their responsibility. The field continues to be rented and we have seen both a pony and sheep in the fields. The sheep were removed after a few weeks due to eating too much grass and not leaving enough for the pony. The hedges around the field have not been cut in several years. I have now obtained a quotation from a farmer of £60 per hour plus vat to cut these for us. The farmer has advised that the maximum charge will be £580 including vat for both fields to be cut, regardless of

it taking longer than the allotted 8 hours. I will include in this work the cutting of the top of the hedge next to No 3 as this was not cut last year with the remainder of the hedge. They have recommended undertaking the work in September. The people renting the field do not require the water by the entrance gate. I requested that our treasurer, Paul Tate, look to cancelling this supply as there are unneeded costs involved with this. The disconnection of this water service was discussed at our last committee meeting. The properties appear to be in a good state of repair although there are cracks in the porch area of No 3. This issue was noted during the last survey and the suggestion was that the porch is moving away from the rest of the property.

I would like to thank the other Trustees for their work since our last AGM.

## Great Chart Primary School

### **Annual report to the Parish Council May 2022 by Great Chart Primary School**

It would be great to be able to present a report which doesn't mention covid 19 but the challenges the school has faced, like all schools, has continued for staff, governors, parents and most importantly our pupils. In some ways this year has been trickier having to manage pupil and staff absences, whilst remaining open throughout the year. As we are now looking forward to the summer months and less restrictions, hopefully we can start to get back to some normality.

As a school we have adapted and changed constantly, reacting to restrictions and guidelines. Throughout all this turmoil the children of Great Chart Primary School have adapted and demonstrated a very clear understanding of our school values: respect, responsibility, resilience, aspiration, kindness and independence. The children have been working really hard this year to 'catch up' and 'keep up'. This has been achievable due to extra funding from the government so that we have been able to recruit a TA to support pupils speech and language needs and additional teachers to work with specific year groups causing concerns.

On top of a very challenging year, we also had the 'pleasure' of an Ofsted inspection. This took place just before Christmas when our pupils and staff absences were extremely high. However, we accepted the challenge and a two-day inspection resulted in us remaining as 'Outstanding.' As a school we are really proud of this judgement, but we are mindful with the ever changing 'goalposts' that this may not be realistic in the future.

One of our school priorities this year was to re-engage with parents after having to restrict their access to staff and the building over the past two years. We have been able to do this successfully, keeping parents informed and sharing in their child's learning experiences, through the following ways:

- Face to face consultations
- Open sessions
- Christmas shows
- Biscuit and book sessions
- Class Dojo- learning platform to share information and pupil achievements
- Individual interim achievement reports
- Parental questionnaires
- Home/ school reading initiatives

We have been really pleased with how parents have engaged with us during the year, ultimately having a positive impact on their child's learning.

We are grateful to the Parish Council for their continued hard work to secure a 20mph speed limit in Hoxton Close. This has certainly improved parent and pupil safety, along with our poster campaign, supported by the Parish Council. We are also grateful for the Parish Council in purchasing Platinum Jubilee souvenir coins to give to all of the children in the local schools. This will be something for them to cherish and a way to remember this momentous event. We will be organising lots of events for the week before half term for our school community so hopefully the children and staff will get into the 'spirit' of the celebrations. We would also like to thank Councillor Bill Barrett for his support in securing some landscaping outside of our KS2 entrance. Our site Managers will continue to maintain this small area immediately next to our school KS2 gates.

Unfortunately, the school was very disappointed with the refurbishment of the Great Chart horse structure along the A28. The horse sculpture has links with Great Chart Primary School as the sculptor worked with pupils from Great Chart Primary School. It was designed based on our pupils, wearing our uniform. With the refurbishment, this has been overlooked and a piece of history has been lost which is such a shame.

We are really hoping that the next school year will be 'normal' but with all the challenges we have faced there have been some real positives. I truly believe we have become a much stronger community.

Thank you to the children, staff, governors, and parents of Great Chart Primary School. What an amazing team!

**Mrs W. J. Pang**  
**Headteacher**

## **Bean Fund**

The Bean Fund is a small charity, very old, and the beneficiaries are retired farm workers. The fund is reduced to just two beneficiaries that fit the quite tight requirements now, as the rest have passed away.

There is a fund set up such that the charity is only able to spend the interest made on the original capital sum. Both recipients received £150 just before Christmas – still keeping the capital untouched.

The Trustees are all ex-officio for the role they play elsewhere in the Borough, the Trustees are: -  
Chair of Kingsnorth Parish Council  
Chair of Great Chart with Singleton PC  
Vicar of Kingsnorth



Rector of Great Chart  
Mayor of Ashford  
Vicar of Ashford  
Local NFU Representative

Although there are still two recipients the Charity is slightly missed up at the present since the churches in Ashford have all joined together and become one Parish, which sort of reduces the Trustees and as Chair I am unsure how we progress under these new circumstances.

We are able to continue paying out our interest as the Clerk is local to Great Chart and as Chair of GC w Singleton PC, we have been the most consistent Trustees and we just keep the Charity ticking over, in order to keep going while we still have people to pay out to.

On behalf of the Trustees & Recipients I would like to thank our Clerk, Mrs Gill Tate, for keeping on top of the bank statements and ensuring we keep within the Trust document.

**Ian McClintock**  
**Chair – Bean Fund**

## **Singleton Environment Centre**

As a parish, we are fortunate to have some significant assets in which the council has a significant interest – Singleton Village Hall, Great Chart Village Hall, and The Playing Fields – all of which are run by separate boards of trustees. We also have the Singleton Environment Centre, leased from Ashford Borough Council (ABC) and run, on behalf of the parish by Singleton Spaces, which is a registered charity (1180577).

The Centre is home to Ashford's top eatery 'Footprints Café Bistro' and the funding provided by the café helps support the charity's aims of Environmental Education and Engagement.

To this end, we have been able to engage the services of an Education Officer, whose role we expect to increase significantly as we move into next year. The extension, funded mostly by s106 monies and built largely during lockdown, has given us extra space to enable the expansion of our educational offering.

The Centre also hosts the Annual Parish Picnic, as well as a number of fundraisers; a quarterly quiz, various nature focused talks, a Christmas Fare and not forgetting the renowned Ashford Repair Café, which is geared toward fixing items that might otherwise have been discarded.

Financially, largely as a result of Covid restrictions, we had a tough year, but I am pleased to report that as we've moved into 2022, things are looking brighter and I am delighted to report that for 2022-23, Singleton Spaces has been chosen by the Mayor of Ashford, Cllr Jenny Webb, to be her Annual Charity during her year of office!

**Malcolm Wiffen**  
**Chair, Singleton Spaces**

## Flora the Singleton Giant

Hello all,

Over the past few years Flora has been shielding from the pandemic. With a few outings out to acknowledge the good work of the NHS and then touring around the estate visiting some very excited residents who really enjoyed seeing her.

With the pandemic there no events to attend in 2020 as most were either cancelled or very restricted on numbers.

In 2021, as things started to relax, Flora was able to start attending events. The events she attended were selected carefully, as some of her crew had to be careful, and where possible we supported the Parish Council events.

We are now into 2022 and we are looking forward to a busier year.

We look forward to supporting the Parish council where we can and would like to thank the PC for the support, they have given us. Over the past years the giants of Kent have slowly dwindled in number but there is a new group starting up in Whitstable, bringing back an old friend of Flora's, Captain Sam.

The reason for mentioning this is two-fold. First is that one of the leads for Sam is a former resident of our parish and a crew member of Flora. The second is it shows that it needs a good number of people involved with the giants to help keep them around.

If anyone wants to find out more then please speak to me, look for Flora, The Singleton Giant, on Facebook or visit her website [singletongiant.org.uk](http://singletongiant.org.uk)

**Peter Barker**  
**Chair – Flora the Singleton Giant Association**



*2 Peter Barker with Flora*

## Great Chart and Godinton WI Annual Report

As with many other groups, the coronavirus pandemic had a tremendous effect upon our WI group. During the months when the government restrictions prevented us from meeting indoors, many of us took the opportunity to meet outdoors, initially in pairs and then in greater numbers, for local walks, a chat and a coffee. We eventually met in the summer at our village hall, enjoying just being together after months of separation, and sharing our experiences over tea and cake.

Life is now becoming more 'normal'. We had hilarious Christmas celebrations which lifted the spirits of everyone and sent out 2021 with a bang, thanks to the cheeky pass the parcel. We have engaged in a variety of activities including making fresh floral posies for Random Acts of Kindness week, Easter wreaths, games and craft evenings, etc., at the same time as keeping abreast with current affairs and raising awareness of matters of concern at our meetings.

The highlight of the year so far was marked by the planting of a flowering cherry tree adjacent to Great Chart Village Hall where our WI was founded 100 years ago. The tree was kindly donated by the parish council for which we are most appreciative, will not only be a lasting memory of our 100th anniversary celebration but also in honor of HM, The Queen in her Platinum Anniversary year and will form part of the Green canopy initiative to celebrate the 70th year of her reign. Special guests were invited to our 100th anniversary celebrations as well as members from other WIs in our federation. All gathered to see our president Janet Goodwin and the retiring East Kent Chairman, Gill Crone plant the tree and then we all enjoyed a celebratory afternoon tea and cakes in Great Chart Village Hall. A happy sunny afternoon and a day to remember.

We also joined with Singleton WI on 18th June where we jointly ran a very successful stall at the Big Platinum Jubilee lunch on Great Chart Playing Fields in celebration of the Queen's amazing achievement. We provided strawberry cream teas; sold many and varied homemade craft items together with a fabulous raffle hamper. A "duck hooking" game was manned by one of our members who was inundated with enthusiastic children wanting to give their skills a try with the temptation of sweets or bubble tubes as prizes for their talents. We were also in charge of both lost property and lost children and were the designated First Aid post. Fortunately the latter was only needed for a young man with a nose bleed and we had a few lost items but thankfully no lost children !!

It has been a joy to share activities with the newly formed Singleton WI. We wish them every success and look forward to sharing happy times with them in the future.

Great Chart & Godinton WI meet on the 3rd Wednesday of every month at 7.30pm at Godinton Village Hall.

For further details of our activities find us on Facebook: Great Chart & Godinton Women's Institute

Or email: [secretary@greatchartgodintonwi.uk](mailto:secretary@greatchartgodintonwi.uk)

[president@greatchartgodintonwi.uk](mailto:president@greatchartgodintonwi.uk)

We welcome new members.

## **St Mary's Great Chart with St Francis Church, Cryol Road**

This last year, since May 2021, saw the doors of St Mary's Church reopen with regular Sunday services in church rather than via Zoom! Although the building was closed during Lockdown and other restrictions, services were maintained and the church in evidence supporting our community, in liaison with St Francis.

### **Makelunch**

A wonderful team of volunteers have now run Makelunch at St Francis Church for over four and a half years. Fresh hot cooked meals are prepared and served every school holiday to children, parents and carers from Great Chart, Singleton and beyond every school holiday. The summer of 2021 saw us restart our full Makelunch offer from St Francis, with meals, craft and sports activities twice a week during the long holiday from our brand new kitchen! At Christmas we served over 90 full Christmas roast meals; every child saw Father Christmas and went home with a bespoke wrapped Christmas present. The money for the presents was donated by members of Great Chart congregation and others from within our large parish and community. This Easter, the Archbishop of Canterbury joined us for Makelunch; he was brilliant chatting with the children, presenting them with Easter Eggs; he also chatted with parents, carers and volunteers before sitting down for a freshly cooked lunch. We have worked in liaison with our local primary schools in the community; many children and parents have attended some or all of our much needed sessions.

### **Remembrance Sunday**

Once again we were able to be on parade, with the Uniformed Organisations out in force starting from the Swan and Dog. We were met by significant numbers of the community at the War Memorial for wreath laying and a minute's silence, before going in to church for a Remembrance Service. Afterwards the parade returned to the Swan and Dog; Great Chart had remembered!

### **Weddings, Funerals and Baptisms**

Sadly there were a significantly large number of funerals at St Mary's during lockdown and beyond. A number of local members of our community are no longer with us and their passing was mourned by many. We were able to begin Baptisms and Weddings again and this summer the church will host 14 weddings! We are very grateful to the Parish Council who funded the purchase of two notice boards to go outside the church alerting the village to funerals and weddings.

### **St Mary's Church**

After lockdown, the church had a complete 'spring clean' both inside and out. Again we are grateful to the Parish Council for their financial support which allows for the churchyard to be maintained for all who regularly visit it, either visiting loved ones' graves, visiting the church or having picnics sitting on the benches. We are currently fundraising to improve the pathway so that access to the church is easier and the flooring levelled. This summer on 16th / 17th July we had a huge Flower and Mouse Festival with refreshments served in the village hall as part of our fund raising efforts.

Much is happening at and beyond the church. We very much work in partnership with our schools, Uniformed Organisation and many other agencies. We are grateful for the support of the Parish Council and many others from the community.

**Revd. Cathie Aldis - Saunders**

## **Finance Report**

### **Finance Officer's Report**

The financial year 2021-22 has been another productive year for the Parish Council. This short report will highlight some of the main achievements.

The Parish Council introduced a new scheme that enables residents to help keep the parish clean. The Community Hero scheme provides residents with litter picking equipment; gloves, bags, hi visibility jackets, and all the volunteers receive a pack with information about risk assessment. The Parish Council improved the path adjacent to Singleton Village Hall by resurfacing it. The Parish Council also funded the Traffic Regulation Order to reduce the speed on Hoxton Close, Running Foxes Lane and John Wesley school road to 20 mph.

The Parish Council continues to provide financial support to several local organisations and the established grants application process seems to work well, giving Councillors adequate information to assess each request without being too onerous for applicants to complete. A small contribution from each household provides a substantial 'pot' from which to support a variety of organisations and amenities within our community.

## **Independent Auditor's comment**

The Parish Council accounts, and governing documents are reviewed annually by an internal auditor and an external auditor. The internal auditor's comments can be read below:

"Further to my recent examination of your accounts, I am now able to report as follows.

Firstly, I was pleased to note that the council had re-approved all the relevant documents (Standing Orders, Financial Regulations, Risk Assessments etc), and that the Public Notices required had been properly exhibited.

As with last year, there were almost no comments on the Minutes themselves, other than May and June's pages both starting at 1844.

There were several comments concerning the accounts themselves- mostly revolving around the reclaiming of VAT, and mostly of a minor nature.

Almost all transactions were backed by paperwork, and almost all expenditure by the invoice itself. The VAT could be almost entirely reconciled back to these invoices.

Finally, I noted that the Fidelity Guarantee on your insurance policy is for up to £250,000 yet you have considerably more than that in the bank. Councillors may wish to ask Zurich to increase the level to something closer to the reserves you hold.

Given the very minor nature of the comments above, I am, once again, happy to confirm that in my view the council is being well run, and that the accounts present a true and fair picture of the council's affairs and year-end situation. I have therefore signed the AGAR Internal Audit report.

Yours sincerely,

**Mike Cuerden**  
Independent Internal Auditor

## Grants allocated in 2021-2022

The parish council was pleased to support the following groups with grants:

16/04/2021	Electricity bill-Great Chart Cricket Club	£252.85
18/06/2021	Electricity bill-Great Chart Cricket Club	£207.05
18/06/2021	Electricity bill-Great Chart Cricket Club	£63.00
16/07/2021	Singleton Spaces	£1,000.00
17/09/2021	Grant for tree- Great Chart and Godinton WI	£250.00
20/09/2021	Flora the Singleton Giant-Insurance	£530.00
03/12/2021	Flora the Singleton Giant-Trailer insurance	£176.82
<b>Total:</b>		<b>£2,479.72</b>

## Earmarked and Reserved Funds

Some of the PC's reserves are earmarked for various projects: -

Account	Opening Balance	Expenditure	Closing Balance
Contingency Reserves	35,000.00		35,000.00
EMR - Cuckoo Park	194,060.00		194,060.00
EMR - The Viewing Point	42,332.00		42,332.00
EMR-PFA Play Park	20,000.00		20,000.00
Yellow Land Play Equipment	20,000.00	-4,000.00	16,000.00
Parish Office	10,000.00		10,000.00
	<b>321,392.00</b>	<b>-4,000.00</b>	<b>317,392.00</b>

Cuckoo Park is now open for all to enjoy and the PC has taken over responsibility for the maintenance and upkeep of the park. This is an ongoing project as, in addition to general maintenance, a fund for replacement of the equipment is required for when it reaches the end of its usable life (approx. 20 years).

The "Yellow Land" fund refers to monies designated for the maintenance of The Viewpoint and land to the rear of Singleton Village Hall.

## Year-end accounts

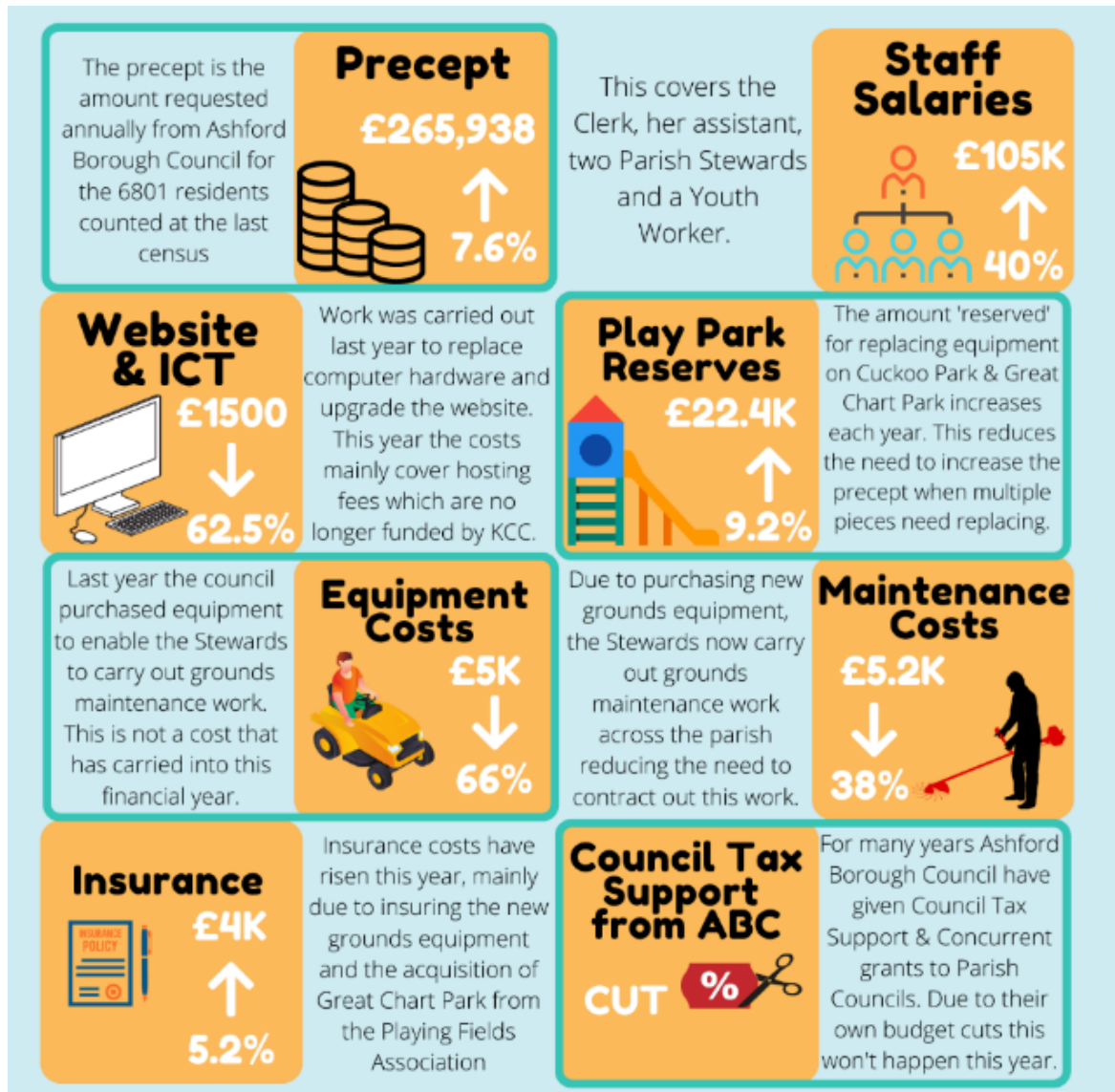
A copy of the year-end accounts for 2021-2022 will be posted to our website: [www.greatchartsingleton-pc.gov.uk](http://www.greatchartsingleton-pc.gov.uk)

An income and expenditure summary follows here:

## Income and Expenditure

Great Chart with Singleton Parish Income and Expenditure Account for Year Ended 31st March 2022					
	31st March 2021	Income Summary	31st March 2022		
	260,239	Precept	265,938		
	<b>260,239</b>	Sub Total	<b>265,938</b>		
		<b>Operating Income</b>			
	16,880	Income	11,113		
	<b>277,119</b>	Total Income	<b>277,051</b>		
		<b>Running Costs</b>			
	113,950	Administration	114,126		
	20,896	Caretaker	7,883		
	13,899	Maintenance	9,745		
	6,239	Projects	16,811		
	3,546	PFA	5,122		
	16,627	Singleton Environment Centre	30,351		
	<b>175,155</b>	Total Expenditure	<b>184,039</b>		
		<b>General Fund Analysis</b>			
	75,955	Opening Balance	114,463		
	277,119	Plus: Income for Year	277,051		
	353,074		391,514		
	175,155	Less: Expenditure for Year	184,039		
	177,918		207,476		
	63,455	Transfers TO / FROM Reserves	0		
	<b>114,463</b>	<b>Closing Balance</b>	<b>207,476</b>		

# Budget 2021-2022





## Bank reconciliation

	Metro Bank Current Account	88,227.41	
	Metro Bank Instant Access	76,291.08	
	Metro Bank Credit Card 6934	0.00	
	Metro Bank Credit Card 8589	0.00	
	NatWest Current	100.00	
	NatWest Reserve Account	148,303.75	
	Nationwide Business 1 Yr Fixed	211,246.97	
			<b>524,169.21</b>
<b>All Cash &amp; Bank Accounts</b>			
1	Metro Bank Current Account		88,227.41
2	Metro Bank Instant Access		76,291.08
3	Metro Bank Credit Card		0.00
4	NatWest Current Account		100.00
5	NatWest Reserve Account		148,303.75
6	Nationwide Business 1 Yr Fixed		211,246.97
	Other Cash & Bank Balances		0.00
	<b>Total Cash &amp; Bank Balances</b>		<b>524,169.21</b>

# Great Chart with Singleton Parish Council

## Contacts

### Chilmington Ward

Cllr Ian McClintock



Tel: 07919 278828

Email: [ian.mcclintock@greatchartsingleton-pc.gov.uk](mailto:ian.mcclintock@greatchartsingleton-pc.gov.uk)

- Finance Committee
- Great Chart Playing Fields Association
- Chilmington Green Planning Working Group
- Singleton Spaces
- Complaints Committee

### Great Chart with Singleton North Ward

Cllr Paul Tate



Tel: 07850 082023

Email: [paul.tate@greatchartsingleton-pc.gov.uk](mailto:paul.tate@greatchartsingleton-pc.gov.uk)

- Finance Committee
- Great Chart Village Hall – Chair
- Toke and Streeter Alms Houses Trust

### Singleton East Ward



Cllr Katrina Alexander





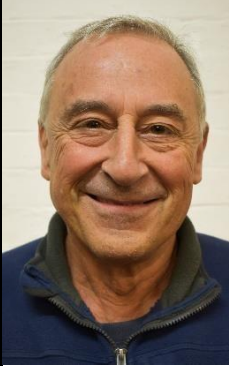


Tel: 07791 632493

Email: [katrina.alexander@greatchartsingleton-pc.gov.uk](mailto:katrina.alexander@greatchartsingleton-pc.gov.uk)

- Staffing Committee

<p>Cllr Janet Sullivan</p> 	<p>Tel: 01233 645400</p> <p>Email: <a href="mailto:janet.sullivan@greatchartsingleton-pc.gov.uk">janet.sullivan@greatchartsingleton-pc.gov.uk</a></p> <p>Vice Chair of the Parish Council also member of:</p> <ul style="list-style-type: none"> <li>• Staffing Committee</li> <li>• Chilmington Green Planning Working Group</li> <li>• Great Chart Playing Fields Association – Chair &amp; Secretary</li> </ul>
<p>Cllr Malcolm Wiffen</p> 	<p>Tel: 01233 635016</p> <p>Email: <a href="mailto:malcolm.wiffen@greatchartsingleton-pc.gov.uk">malcolm.wiffen@greatchartsingleton-pc.gov.uk</a></p> <p>Chair of the Parish Council also member of:</p> <ul style="list-style-type: none"> <li>• Finance Committee</li> <li>• Singleton Spaces- Chair</li> <li>• Chilmington Green Planning Working Group</li> <li>• Staffing Committee - Chair</li> </ul>
<p>Cllr Dave Gathern</p>	<p>Email: <a href="mailto:dave.gathern@greatchartsingleton-pc.gov.uk">dave.gathern@greatchartsingleton-pc.gov.uk</a></p>

Singleton West Ward	
<p>Cllr Peter Barker</p> 	<p>Tel: 01233 610241</p> <p>Email: <a href="mailto:peter.barker@greatchartsingleton-pc.gov.uk">peter.barker@greatchartsingleton-pc.gov.uk</a></p> <ul style="list-style-type: none"> <li>• Finance Committee</li> <li>• Amenities and Open Spaces Committee</li> <li>• Chilmington Green Planning Working Group</li> </ul>

<p>Cllr Yolanda Barker</p> 	<p>Tel: 01233 610241</p> <p>Email: <a href="mailto:yolanda.barker@greatchartsingleton-pc.gov.uk">yolanda.barker@greatchartsingleton-pc.gov.uk</a></p> <p>Vice chair of the parish council also member of:</p> <ul style="list-style-type: none"> <li>• Staffing Committee</li> <li>• Chilmington Green Planning Working Group – Chair</li> <li>• Complaints Committee</li> <li>• Great Chart Playing Fields Association</li> </ul>
<p>Cllr Geoff Darvill</p> 	<p>Tel: 01233 642357</p> <p>Email: <a href="mailto:geoffrey.darvill@greatchartsingleton-pc.gov.uk">geoffrey.darvill@greatchartsingleton-pc.gov.uk</a></p> <ul style="list-style-type: none"> <li>• Finance Committee</li> <li>• Singleton Village Hall – Chair</li> <li>• Great Chart Playing Fields</li> </ul>
<p>Cllr Sally Gathern</p> 	<p>Tel: 07815 803862</p> <p>Email: <a href="mailto:sally.gathern@greatchartsingleton-pc.gov.uk">sally.gathern@greatchartsingleton-pc.gov.uk</a></p> <ul style="list-style-type: none"> <li>• Amenities and Open Spaces Committee-Chair</li> <li>• Complaints Committee</li> </ul>
<p><b>Washford Ward</b></p>	
<p>Cllr Tom Ackrill</p> 	<p>Tel: 07780 470 668</p> <p>Email: <a href="mailto:thomas.ackrill@greatchartsingleton-pc.gov.uk">thomas.ackrill@greatchartsingleton-pc.gov.uk</a></p> <ul style="list-style-type: none"> <li>- Singleton Spaces - Trustee</li> </ul>

## Parish Council Staff and Contact details

<b>Aniko Szocs</b> 	<b>Parish Clerk and Responsible Financial Officer</b> Tel: 01233 616923 Email: <a href="mailto:TheClerk@greatchartsingleton-pc.gov.uk">TheClerk@greatchartsingleton-pc.gov.uk</a>
<b>Paula Cowperthwaite</b> 	<b>Deputy Clerk</b> Tel: 01233 616923 Email: <a href="mailto:paula.cowperthwaite@greatchartsingleton-pc.gov.uk">paula.cowperthwaite@greatchartsingleton-pc.gov.uk</a>
<b>Peter Walkden</b> 	<b>Parish Steward</b>
<b>Robert Heath</b> 	<b>Assistant to Parish Steward</b>

# Great Chart with Singleton Parish Council would like to thank its partners

Ashford Borough Council  
Aspire  
Kent County Council  
Kent Police  
Singleton Environment Centre  
Singleton Spaces  
The Bumblebee Conservation Trust  
Great Chart Village Hall  
Singleton Village Hall  
Great Chart Playing Fields  
Ashford Community Woodland  
Pilgrims Football Club  
Chilmington CMO  
Flora The Singleton Giant  
Great Chart Primary School  
John Wesley Primary School  
The Wyvern School  
Biffa  
Ashford Volunteer Centre  
Godinton and Great Chart WI  
Singleton WI  
Great Chart Cricket Club  
Great Chart Scouts, Beavers & Explorers  
Barrow and Spade Brigade  
Toke and Streeter Alms House Trust  
Friends of Singleton Lake  
St Mary's Great Chart with St Francis Church, Cryol Road