

GREAT CHART WITH SINGLETON PARISH COUNCIL

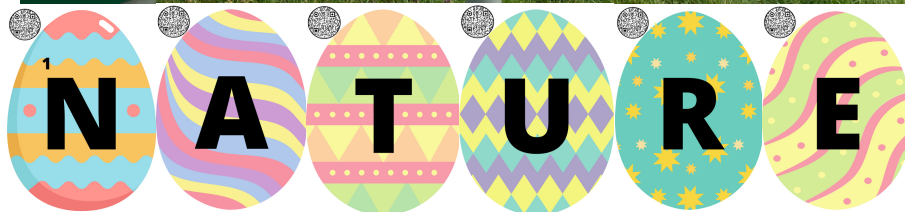
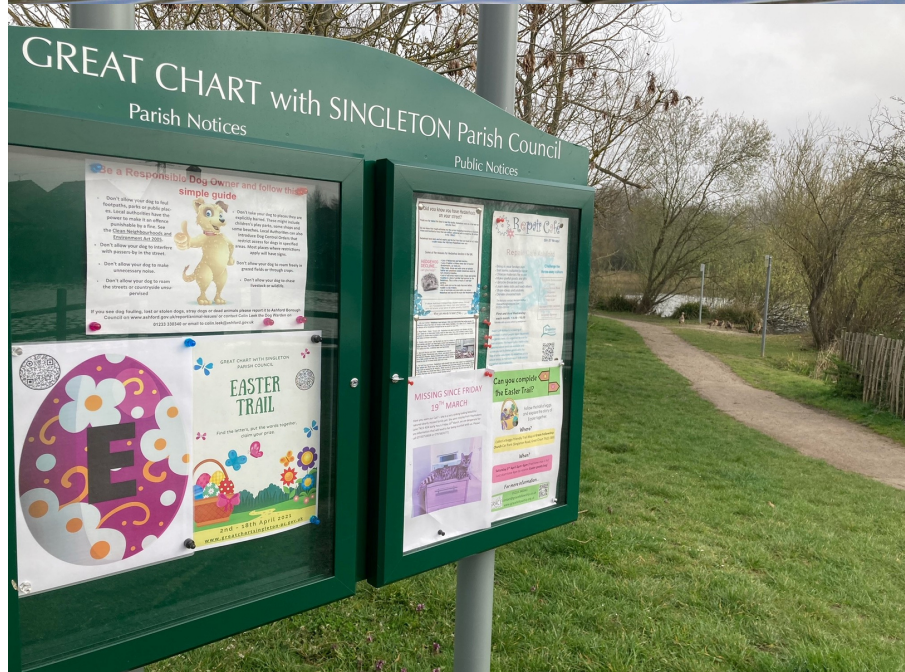


In This Special Green Issue Newsletter

- Meeting Dates and venues for 2021
- Latest News
- Meet Your Councillor
- Pop Up Cafe is back!
- Updates on
- Singleton Environment Centre extension
- Local environmental projects
- Updates from Clubs and Groups
- Useful Contact Info

DATES FOR YOUR DIARY

- Council meeting dates
 - 14 June
 - 12 July
- Pop Up Cafe
 - 14th July
 - 11th August



INSIDE THIS EDITION

Parish Council News	Page 3
Parish Council Meeting Dates	Page 4
Thoughts From Your Chairman	Pages 5-6
Meet Your Councillor	Pages 7-8
You've Asked, We've Done	Page 9
Singleton Environment Centre	Pages 10-11
Local Environment	Page 12
Tree Facts	Page 13
Group Reports	Pages 14-15
Hillcrest Allotments	Page 16
Clubs, Groups, Information and Contacts	Pages 17-20

Keep In Touch

 www.greatchartsingleton-pc.gov.uk
 greatchartwithsingletonparishcouncil
 Gcwspc  GCwSPC
 theclerk@greatchartsingleton-pc.gov.uk
 01233 616923

Photo Credits

Front Cover:

Ducklings - Emma Jobber

All other photos -
councils own


**1. Trees combat
climate change**

Newsletter Advertising and Articles

This newsletter is produced by Great Chart with Singleton Parish Council and is distributed to every house within the Parish and also included on our website and social media pages.

We welcome submissions for articles and events from local clubs, groups and businesses that benefit those living within our parish.

Any views or opinions included in this newsletter are solely those of the authors and do not necessarily represent those of the Parish Council.

We are able to offer advertising and sponsorship opportunities for local businesses. Please contact the Clerk using the contact details above for more information.



Our Easter Trail was very popular over the school holidays. It was lovely to see so many friends and families out searching for the eggs with their maps in hands. Don't forget to send us photos of your wildflowers, or tag us on social media using #singletonflowerpower



After a long break due to COVID-19, the pop up cafe is coming back on July 14th. The cafe will happen on the second Wednesday of every month after that, and the venue will alternate between Singleton Village Hall and Great Chart Village Hall. We are looking forward to seeing our regulars again, and hope to see some new faces with the addition of our alternative venue. If you need help getting to either venue, please email or call 01233 616923.



You may have noticed a couple of leaves popping up on the newsletter pages. These are facts about trees, which are further explained on page 13 and on our website at www.greatchartsingleton-pc.gov.uk under News.

Take a read of page 12 to find out about our art competition, open to everyone in the parish. The competition closes on 5th September 2021.

We hope you are enjoying the new format of our newsletter? Did you know that this newsletter is posted through the letterbox of every house in the parish - nearly 4,000 of them. Do you own a local business? If so, our newsletter is a great way to be seen by local people. The newsletter is delivered on it's own, so your advert won't get thrown away lost in a bunch of leaflets, and is printed on high quality colour paper. Our rates start from as little as £37.50 per advert. Please contact TheClerk@greatchartsingleton-pc.gov.uk for more information.



The consultation period for the proposed 20mph zone from Hoxton Close to Wesley School Road has now closed. The results were strongly in favour of implementing the 20MPH zone for the main road route and all side roads off them. The paperwork will take a few weeks to get in order, but hopefully the new speed limit will be in place by July. There will be a promotional campaign when the limit is changed so that everyone is aware.

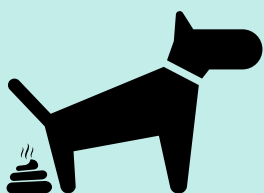
The precept is the amount requested annually from Ashford Borough Council for the 6801 residents counted at the last census

Precept

£265,938



In the last issue we issued an incorrect figure. We said our precept was being raised by 7.6% for a Band D property, when final approved amounts meant it was only raised by 1.8%. We are still going to do everything we originally promised to do though.



We often wonder why anyone would go to the trouble of picking up their dog's mess only to leave it hanging neatly on a tree in a plastic bag. The Parish Council's dog poo bag art installation in May would like to highlight and tackle this issue, and remind residents that there will be no dog poo fairy coming round to pick these bags up in the decades it will take to decompose. We would like to remind residents that dog mess can be placed in all bins, and encourage people to use them if they have already bagged up the mess. We hope the display will highlight our message and help us to work towards keeping the parish dog mess free.

PARISH COUNCIL MEETINGS 2021



The Parish Council meets on the second Monday of the month to discuss local issues and to make decisions. The meeting venue alternates between Singleton Village Hall and Great Chart Village Hall. The dates and venues for the rest of 2021 are confirmed below, why not come along to one of the meetings to find out more about the Parish Council's activities. For more information on agendas and minutes please visit our website www.greatchartsingleton-pc.gov.uk and click on The Council tab

The remaining dates for 2021 meetings are:

14 June 2021 - Singleton Village Hall

12 July 2021 - Great Chart Village Hall

13 September 2021 - Singleton Village Hall

11 October 2021 - Great Chart Village Hall

8 November 2021 - Singleton Village Hall

13 December 2021 - Great Chart Village Hall

If between planned meetings an urgent issue arises, an Extraordinary Meeting can be called. These are announced at least three days in advance and are publicised on our website and social media.

Remote Meetings

At the start of the coronavirus pandemic, emergency legislation was passed to allow Parish Councils to meet remotely. This legislation expired on 6th May 2021 and was not extended. This means that to comply with current law, the council must meet face-to-face for all future meetings. We are aware that some residents will continue to social distance for the foreseeable future, so we look forward to seeing you at a meeting as soon as you feel comfortable to attend.



3. Trees provide oxygen

THOUGHTS FROM THE CHAIRMAN



Welcome to the second PC newsletter for 2021, in our earlier edition I think we said there was a light at the end of the tunnel to be coming out of this Covid-19 situation, little did we realise the light was so far away, table service has started at Footprints café within the Environment Centre and hopefully by the time you read this, eating and drinking inside has been allowed as well.

We recently heard the sad news that HRH Prince Philip, Duke of Edinburgh passed away peacefully on Friday 9th April, a constant companion to the Queen for 73 years, I am sure all of the Royal Family will miss his presence and had we not been in the midst of a global pandemic, his funeral service would have been spectacular, but it was still a fitting and moving ceremony.



As usual, your Parish Council has been busy, despite lockdown. We have just agreed to support a program which lends out litter picking kit to any of our Parishioners who are willing to give up some of their free time to improve the part of the parish they live in – it seems that dropping litter has become a by-product of more people walking to stay healthy, don't get me started about the amount of litter thrown out of cars all over the Borough – so please contact our Clerk if you want to have a go.

Our Team (Ani & Paula) organised a very popular Easter egg hunt for the two weeks of the school holidays, there were three routes, each with a different answer made up of the letters on the eggs posted all over the parish. It was a great success and I saw family groups out doing the trails in all sorts of weather, but I have to say I have seen some very funny answers. But it was great to see so many people having a go – so thank you Ani & Paula for organising this for everyone.

The extension at the Singleton Environment Centre is complete, but as I write not yet handed over. Meetings in halls cannot take place until 17th May, so we will be ready certainly from then and I understand EcoKids & Mini-professors will be back using the Woodland Room before then. We will be having a grand opening of the Extension, probably in July when we will have an open day at the Centre for everyone – so watch this space.

Last year I got roped in to taking a more formal post at the Cricket Club after having been a Vice President since my father passed away (in 1997) as he was a great cricketer and supporter of the club. During 2020 they managed to play about 15 games during the whole Summer – but this year we have some new people in posts, Bar Manager & Social Secretary and they are looking forward to be able to open the bar and the club house by running some events during the week when the Cricketers are not using it. I know the Colts Section and both the Saturday & Sunday Teams are always looking for new players, so if you have a young person or even an older one who wants to try their hand, they will be made welcome!

The PC is partnering up with Chilmington CMO, Ashford Community Woodland (ACW), Singleton Environment Centre and others as we embark upon a project that will see Colemans Kitchen Wood (an ancient woodland) opposite the Environment Centre, and

**4. Trees save
water**



THOUGHTS FROM THE CHAIRMAN



at the top of the Chilmington Discovery Park, much better looked after and managed but also create a "Friends of CKW" to involve some of our parishioners getting 'hands on' with looking after this great parish asset and there are some very enthusiastic new residents in Chilmington who want to help too.

Writing this note I am slightly anxious about future meetings of the PC as the adjustment on the Legislation that covers our meetings and allows us to meet remotely via Teams is coming to an end on 6th May, which means we will be forced to meet in person as it will be our Annual Parish Council meeting (to elect a Chair etc) which we cancelled last year – I fear this might be happening too soon as not everyone has had the vaccination, nor do they feel comfortable meeting up with others yet too, so I am hoping the powers that be in Government make the adjustment longer for a few months, to allow things to normalise a little more before we get back to 'face to face' meetings.

I do hope that we are coming out of the Covid situation and everyone is careful about the way things happen during this process and we can get back to some sort of normality, although I think our new normal will be different to that of 2019, but I guess we will adapt and make the best of our very changing world that we have come to know lately. I do know that some of the user groups are slowly coming back to both of our Village Halls and hopefully after 17th May, when meetings can take place again, more will be coming back.

Look out in future newsletters and Social Media, not to mention our noticeboards for some of the events that are planned for the summer, both in the parish and at the Environment Centre and now also in Colemans Kitchen Wood.

Ian McClintock, Chair – Great Chart with Singleton PC

**5. Trees help prevent
water pollution**



**CHILMINGTON MANAGEMENT
ORGANISATION**

A charity dedicated to the residents
of Chilmington Green; to own,
manage and maintain excellent
shared spaces and buildings for the
benefit of the community in present
and future generations.

Contact Us
cmo.org.uk
hello@cmo.org.uk
07771 838740



Charity No. 1194013
Company House No. 12134646



MEET YOUR COUNCILLOR



Each newsletter we introduce you to one of the councillors that make up your Parish Council—you may well recognise their faces already. In this issue Paul Tate is answering your questions. He is councillor for the Great Chart with Singleton North Ward.

1) What is your name and what roles do you hold in the Parish?

I am Paul Tate and I'm the councillor for Great Chart. I am also a member of the Finance sub committee.

2) Tell us a bit about yourself.

I have lived in the parish since 1980 and in the village since 1995. I was born in Yorkshire, grew up in the Midlands and came to teach in Ashford in 1972 (in fact it is highly likely that some of you reading this may have been taught by me!).

3) Why did you become a Councillor and what skills have you brought to the table?

Since retiring from full time teaching 2011, I have been able to be more actively involved in the Parish. This started when I was reminded by the chairman of the Parish Council that I had agreed to become a Councillor once I had retired, though I continued marking Design & Technology (D&T) A level work until 2018. Prior to this I had been a committee member of the Great Chart Society since 1995 helping with the running of many functions for its members and the wider village community. I have been an active member and, more recently, chairman, of Great Chart Village Hall Committee where one of the first projects I became involved in was the much needed updating of the toilets, including disabled facilities, to meet modern requirements. (This also avoided the frustration of being called out to keep patching bits together to make the antiqued toilets function!). Fortunately I was able to utilise my D&T skills further to design and project manage the recently refitted and updated kitchen facilities

in the hall so that they meet current H&S requirements to prepare and serve food, thus helping to give the hall a new lease of life and broadening the hall's range of functions for the local community.

Last year I took over as treasurer of the Almshouses in the village, and, along with the other trustees we have been engaged in updating the facilities for the residents and to ensure their preservation for future generations.

The skills gained in my professional career have been of great use as a Councillor, such as being able to appreciate other people's points of view (actually listening to what others have to say), finding practical solutions, often having to look at problems from a different angle to come up with a solution or compromise.



6. Trees reduce violence



MEET YOUR COUNCILLOR



4) What do you enjoy most about being a Councillor?

I really enjoy being a parish councillor. Our Parish Council is made up of people with a wide range of backgrounds and skills, which make it both an approachable and productive PC. The good humoured banter at meetings ensures nobody monopolises the agenda, everything is readily scrutinised and everyone feels valued. Those members of the public who attend the meetings can testify to this, as they are certainly not stuffy affairs. If you have not been to a Parish Council meeting I would encourage to attend at least one to see us in action and get to meet the Councillor for your area.

5) What do you personally think is the most important part of the Council's work?

I feel that a great strength of our Parish Council is its ability to be able to feed back to our Borough Councillors people's views and concerns, as we are fortunate that they invariably always attend our PC meetings and are able to explain or look into our concerns.

6) What do you feel is the Council's biggest achievement to date?

Some of the biggest achievements the Council has achieved has been the taking over and successfully running the Environment Centre, supporting youngsters in the parish through play areas and play fields and being able to support local clubs and organisations with grants for projects. Tackling the ongoing problem of traffic calming both in Singleton & Great Chart has been a challenge for all of us, but progress is being made (albeit slowly) thanks to the diligent efforts of Councillors to keep it high on our agenda.

7) What do you personally want to achieve as a Councillor in the future?

At a personal level I have a great desire to get something done about the 'rat running' through The Street in Great Chart which has houses, many of which are listed, with windows only feet away from the throughfare. Many residents have raised concerns about the volume and speed of vehicle using the old road through the village rather than using the by-pass, opened in 1983, which was supposed to take the traffic away from this ancient street. I have been involved in the Speedwatch initiative for the past few years in the hope that people might drive carefully through the village.

8) What do you like to do in your spare time?

Having two young grandchildren with child minding commitments makes for a hectic lifestyle yet again, in between DIY projects and amateur photography.

Ashford In Bloom

The Ashford In Bloom competition is back for 2021 and we would love to see some gardens from Great Chart and Singleton being entered - we have had previous winners from the parish. We are particularly fond of wildlife friendly gardens so we are pleased that one of the categories is Most Environmentally Friendly Garden. For more information take a look on Ashford Borough Council's website. Whether you do or don't decide to enter the competition, we would love to see photos of your wildlife friendly gardens. Please email them to TheClerk@greatchartsingleton-pc.gov.uk or message them to us on social media, and we may repost them or print them in future newsletters if we have your permission.



YOU'VE ASKED WE'VE DONE



Spring has sprung and the Parish Stewards have been out and about as usual, tidying the place up. They cut back the mass of brambles alongside the footpath between Great Chart School and Windsor Court - and disposed of all the litter, cans and bottles hiding inside it.



The community woodlands has had some clearance work carried out to remove fly tipped rubbish which has been detrimental to the local wildlife. This was done by Ashford Borough Council and part funded by the Parish Council. Please can we remind people not to leave litter in the woodlands, and if you see fly tipping to report it to Ashford Borough Council.

8. Trees are teachers and playmates

The lines marking out the walking and cycle lanes on Singleton Road had become damaged and faded. The Parish Clerk reported this via the KCC website and KCC came and repainted them. Thank you!



A bin requested by the Parish Council was installed four weeks later on the Viewpoint between Singleton Village Hall, Strouts Road and Normandy Way. Perfectly located for snack packets on the way home from school, and opposite our dog poo bag dispenser for dog owners.



Dial 999 in an emergency
Site: Cuckoo Park,
Wesley School Road, TN23 5LW

What are SUDS?

A Sustainable Urban Drainage System mimics the natural drainage process and minimises potential negative flooding impacts from nearby developments. They support the adaptability of the area to the impact of climate change, whilst also enhancing biodiversity.

As the SUDS collect water run off, you can never be sure how deep the water you can see is going to be. It is likely to be deeper than you think. Even in summer, it will likely be full of deep mud.

DANGER

- DEEP WATER
- NO SWIMMING
- ICE RISK

If you need to make contact about an issue in the area, please contact the Parish Clerk, Great Chart With Singleton Parish Council, call 01223 810223 or email thetask@greatchartwithsingleton.gov.uk

New information signs have been erected in Cuckoo Park explaining the purpose of the SUDS (Sustainable Urban Drainage System) there, the benefits it provides but also warning of its potential dangers.



We have installed our first Bat Box around Singleton Lake. Made by the Repair Cafe and installed by the Parish Stewards we hope it is the first of many we can install to provide shelter for our nocturnal friends.

The Stewards have had to clean up and repair a number of our noticeboards recently. Please can we remind people that the left side of the boards is unlocked, please don't flypost on the outside of the boards.



ENVIRONMENT CENTRE

With the publication of our second parish magazine for 2021, it seems that the various lockdowns are coming to an end and restrictions limiting indoor group meetings are being eased. This is wonderful news and enables the Centre to fully re-open and start providing the full range of activities you're used to seeing.

As with many other organisations the past year has been a difficult one for the Centre. Revenues have been significantly reduced, but thanks to the Furlough Scheme and some generous Local Authority grants, we've managed to keep our "heads above water" and retain all of the staff. By the time you receive this copy of the Parish Magazine, you will hopefully be able to enjoy the full offer at the Footprints Café, both inside and outside, although you will still need to observe social distancing and wear a mask inside when not seated at your table.



Footprints Cafe have just completed an upgrade of the Yew room and now have their own satellite kitchen which means they can cook more roast potatoes for the Sunday carvery! A carpentry work shop has just started up and the charity "Blossoms of Hope" are doing an amazing job improving our allotment area too.



As has been well documented, we have added a large extension to the Centre with a two storey structure opposite the existing workshops on the lower part of the site. The Centre Manager, John, explains more about what the extension will bring to the centre over the page.

One beneficiary of the extension is the Repair Cafe. This voluntary organisation will repair your household items for minimal, or often no, cost and have an 80% success rate of repair. Now that the extension is up and running, the Repair Cafe are the sole users of the original workshop giving them more work space. They are also using the standalone container as storage, and have even turned the roof into a wildflower garden.



10. Trees provide a canopy and habitat for wildlife

As the light at the end of the tunnel starts to shine more brightly, we are pleased to welcome visitors, both regular and new, to the Centre.

Malcolm Wiffen,
Chair, Singleton Spaces

ENVIRONMENT CENTRE

Hi Everyone, I'm John. My role as manager at the Environment Centre is a varied one and has been right from the beginning. As I write this I can't help but think back to the first day of work (now over 5 years ago) and thinking what a great place this really is and how much potential it had. Having worked in hotels for over 20 years, this certainly was a refreshing new challenge to take up. Each of the 5 years has been totally different and the challenges have varied from changes in operators (now the Centre is operated by Singleton Spaces), bringing Footprints Cafe "in-house", obtaining charity status (this took serious effort from a lot of individuals), much needed reinvestment across the Centre and of course the impact of Covid!

All said and done however I am so very excited as we are now in the process of opening our new extension to the site - The Brisley Centre! Made from old shipping containers we now have three additional rooms, an observation platform and a lovely new office for myself! To see a rundown area of the site get such a make over has been a privilege to be part of. Hearing visitors talk about the beautiful view from the observation platform never gets boring.



The Brisley Centre will allow for a lot of educational activities to take place and we hope to add to this by installing our own "Spring Watch" system so that people can see the birds nesting, chicks hatching and other wildlife in action on a monitor from inside the educational room. We are also looking to increase the number of school visits with the help of our own educational officer. The Woodland Room hosts all our children's activities and in return this means the workshop has been handed over to the Repair Cafe Team. Both user groups are very pleased!



What is most exciting is that amongst all these improvements since Singleton Spaces took over; there are still so many fresh ideas coming forward from people that love the Centre. I very much hope to be just as busy in the coming years to implement them all!



Enjoy Your Visit!
John Alexander
Centre Manager



Amenities, Open Spaces and Environment Committee Report.

Firstly, I hope you noticed the new name for this sub-committee; we agreed the name change to reflect our additional focus on, and responsibility for, the local environment.

Secondly, I wanted to thank you for the very positive and encouraging responses we received to our last article. It was great to hear your ideas. Please do keep your suggestions coming!

In this newsletter, we are focusing on trees. I recently attended an Environment Conference in which the importance of trees and their crucial role in combatting climate change, and reducing pollution, was repeatedly emphasised. As a Parish Council, we are very proud of our record for tree-planting and it was encouraging to hear from the experts that our efforts are taking us in the right direction.

In light of this, we are **running an art competition** which everyone is invited to take part in. We would like you to send us a picture of a local tree or trees, along with one fact about trees. This could be a drawing, sketch, photograph or painting. We will select our favourite pictures to be featured in our next newsletter and on our local noticeboards. Please send your pictures to our clerk stating your name, age (if under 18) and contact details. Entries from children are especially welcome but would need to be submitted by a parent or carer, please. Please be aware that by entering the competition, you agree to you/your child's tree picture potentially being displayed, along with you/your child's first name and age (if under 18). Please email TheClerk@greatchartsingleton-pc.gov.uk or post in the red post box next to the main door at Singleton Village Hall. **The closing date for submissions is Sunday 5th September 2021.** We look forward to seeing your entries!

Furthermore, you will find, dotted throughout this newsletter, some leaves with facts about trees on them. They are explained in even more details on the next page or on our website at http://www.greatchartsingleton-pc.gov.uk/News_30641.aspx

Can you find them all? Did you learn something new? What about this fact here?



On a similar note, we would like to tell you about our collaboration with KCC and their Plan Bee project. After watching the Plan Bee conference online, I met up with several members of the Kent Wildlife Trust, along with our clerk, Ani, to discuss ways in which we can make our parish more pollinator-friendly. We are currently investigating planting pollinator-friendly flower beds on bus stop roofs and bins. We are also looking into improving the North Field by installing a pond and planting pollinator-friendly flowers there. We have also planned a socially-distanced walkabout with KCC to identify other areas where we could reduce mowing and encourage wild flower growth, again with the aim of improving outcomes for all pollinators.

Finally, I attended a Climate Change conference which explained how we can calculate and reduce the council's carbon footprint. It was quite technical and, at times, beyond my expertise but, nevertheless, very useful and informative. The council will now consider how we can take this forward.

Cllr Sally Gatherern.



11. Trees prevent soil erosion



TREE FACTS AND INFORMATION



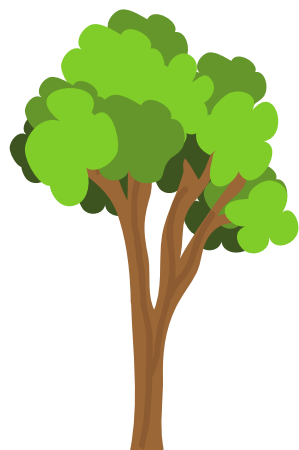
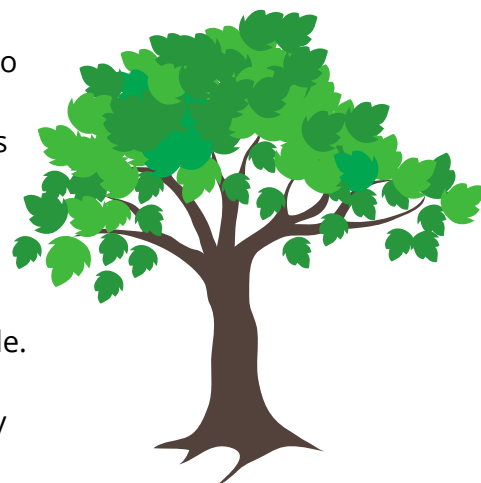
Have you found the leaf fact on each page yet? Here are more detailed explanations about each fact.

1) Excess carbon dioxide (CO₂) is building up in our atmosphere, contributing to climate change. Trees absorb CO₂, removing and storing the carbon while releasing oxygen back into the air. In one year, an acre of mature trees absorbs the same amount of CO₂ produced when you drive your car 26,000 miles.

2) Trees absorb odours and pollutant gases (nitrogen oxides, ammonia, sulphur dioxide and ozone) and filter particulates out of the air by trapping them on their leaves and bark.

3) In one year an acre of mature trees can provide enough oxygen for 18 people.

4) Shade from trees slows water evaporation from thirsty lawns. Most newly planted trees need only fifteen gallons of water a week. As trees transpire, they increase atmospheric moisture.



5) Trees reduce runoff by breaking rainfall thus allowing the water to flow down the trunk and into the earth below the tree. This prevents stormwater from carrying pollutants to the ocean. When mulched, trees act like a sponge that filters this water naturally and uses it to recharge groundwater supplies.

6) Neighbourhoods and homes that are barren have shown to have a greater incidence of violence in and out of the home than their greener counterparts. Trees and landscaping help to reduce the level of fear.

7) Is it winter, spring, summer or autumn? Look at the trees.

8) Whether as houses for children or creative and spiritual inspiration for adults, trees have provided the space for human retreat throughout the ages.

9) Trees as landmarks can give a neighbourhood a new identity and encourage civic pride.

10) Sycamore and oak are among the many urban species that provide excellent urban homes for birds, bees, and squirrels.

11) On hillsides or stream slopes, trees slow runoff and hold soil in place.

12) Trees can mask concrete walls or car parks, and unsightly views. They muffle sound from nearby streets and main roads, and create an eye-soothing canopy of green. Trees absorb dust and wind and reduce glare.

13) The beauty of a well-planted property and its surrounding street and neighbourhood can raise property values by as much as 15 percent.

14) Studies show that the more trees and landscaping a business district has, the more business will flow in. A tree-lined street will also slow traffic – enough to allow the drivers to look at the store fronts instead of whizzing by.

15) An apple tree can yield up to 15-20 bushels of fruit per year and can be planted on the tiniest urban lot. Aside from fruit for humans, trees provide food for birds and wildlife.



GROUP REPORTS

Due to coronavirus restrictions only now lifting, many of our groups have not been running. We are looking forward to next issue's reports in the hope that they are full of activities that have been allowed to go ahead.

GREAT CHART PRIMARY SCHOOL

During international waste week in Great Chart Primary School we learnt how we can save many waste products such as food, paper, plastic and other things that are not reusable. We now know that we should buy reusable water bottles, not plastic ones from the shops; a reusable shopping bag that you can use instead of buying more and a reusable lighter that is not a match that you may throw away. If you don't use reusable products and you throw them away then they will go to landfill - big holes in the ground - where rubbish is piled up and that can be bad for the environment.

We also found out that most of the food we waste could have been eaten (in one year most of us waste about 70kg of food.) We all understand now that some items have labels on them to tell us if they can be recycled and the more we recycle things the better it is for our planet.

Some of the children in our school took part in a competition to make a meal - or some type of food - out of things we would normally waste. For a starter, I used potato peelings with different herbs on top and then cooked them. I made - for the main course - a chicken casserole with leftover chicken from a roast dinner. It also included cauliflower leaves on the side. For a nice refreshment I made a banana milkshake with some old bananas that would have been thrown away otherwise.

In conclusion, it is definitely best to always buy reusable products and if you can't reuse food then put it in a compost bin; if you buy a plastic non-reusable bottle then check if it can be recycled; if you have a packet of food that had your fruit in then look and see if it can be recycled and we now all know that we should always try to not waste as much things now.

Ingredients

5 bananas going brown
500ml Milk



Banana Milkshake

Recipe

1. Peel and cut the bananas and put them in a jug.
2. Pour in the milk.
3. Use a blender until the bananas have all disappeared.
4. Pour over some ice and serve.
5. Do not forget to put the peels in the compost bin!



Emily (Year 6)

Potato Peel Crisps

Ingredients

Potato peelings
Vegetable oil
Salt
Pepper

Recipe

1. up the oven to 180degrees Celsius.
2. Collect up your potato peelings.
3. Drizzle oil into an oven dish.
4. Put the potato peelings into the oven dish.
5. Season with salt and pepper.
6. Bake in the oven for 10 minutes until brown and crispy.



13. Trees increase property value

GREAT CHART CRICKET CLUB



Great Chart Cricket Club has been taking a break over lockdown, but we are now recruiting for the forthcoming season. We are looking for players of any standard to join our friendly club, along with anyone wanting to get back in to cricket or who has always wanted to play. We have a Saturday friendly team and a Sunday league (KVCL) team. Also new for this year we have entered a side in the Sunday 20/20 league.



Adult training is on Wednesdays from 18.00 until dark
We are also looking for children of any standard from the ages of 6 to 16
Training is on Sundays mornings 10.00 until 12.00

For additional details please contact :-
Adults: Darren McGoldrick 07758 781954 / James Ainsley 07867 780679
Kids: Tony Cadd 07796 378312
Secretary: Paul Arnup 07905 869027



ASHFORD HEDGEHOG OBSERVATION GROUP

This year is Hedgehog Street's 10th birthday! Hedgehog Street is a sub-charity set up by the British Hedgehog Preservation Society to raise even more awareness for this declining species.

<https://www.hedgehogstreet.org/> To celebrate they are asking all hedgehog lovers to do 10 things to help the hedgehogs in our gardens and green spaces this year.

At this time of year one of the best ways to help keep hedgehogs healthy is to check before using any garden tools such as forks or spades and especially mowers and strimmers. Unfortunately these are some of the most hazardous ways to inflict injuries so please 'think hedgehog' and check the area first!

It is also a good idea to check an area before starting any gardening or clearing. Hoglets are born at this time of year so check carefully before disturbing a nest. If you're replacing a shed or decking check underneath with a torch first so you don't get any surprises!

Can we make Great Chart with Singleton a hedgehog-friendly parish?!

Share your hedgehog-friendly gardens with 'Ashford Hedgehog

Observation Group' (on Facebook/ Instagram) and follow for more tips and advice.



GREAT CHART & GODINTON WI

At the end of a very unusual period, we are pleased to say all our members are safe and well. We have been keeping in contact with one another by phone; writing and social distance calls. Many have learned how to access Zoom for meetings. However, not everyone has had the equipment for the new technology or have welcomed it. We must remember the WI is known for its friendship; support; education and diversity and to respect one another.

In August after the 1st lockdown some members had the pleasure of meeting in our Treasurers garden for Knit & Natter. All government guidelines were adhered to. During the 3rd National Lockdown Great Chart & Godinton were invited to join Kennington WI's Monday evening Zoom meetings. This enabled us to understand how other groups in our Federation were dealing with the situation. We were able to enjoy their lectures; craft; entertainment etc. via these Zoom meetings. At Easter, each of our members received a surprise bag containing Easter goodies; Quiz; recipe for Muffins and our monthly newsletter aptly called "Not Jam & Jerusalem". Going forward this Institute hopes to restart its meetings at Godinton Village Hall in July 2021 at 7.30pm. The group enjoy many activities such as walking; dancing; good speakers and eating out in fact most events involve food.

If you would like more information on this active; lively group please contact:- Secretary Janet Goodwin 01233 332510 or Committee member Pam Grigg 01233 878013

14. Trees increase business traffic

HILLCREST ALLOTMENTS



GROW YOUR OWN IN GREAT CHART

It used to be easy to get an allotment plot. In the 1970s and 1980s, growing your own went out of fashion, only for a huge renaissance to take place from the 1990s onwards. The situation was helped by uncertainties following 9/11 and then the 2008 financial crash, after which getting a plot became so much more difficult. The parish's Hillcrest Allotments opened in 2015, just south of the area where the village's original allotments were originally located; these closed in the 1960s. Initially, it proved difficult to persuade people to take up plots. How things have changed! Now everybody wants to grow their own, especially so since the coronavirus pandemic hit. Being able to (legally!) spend time outside and be part of a friendly community has been a godsend during the various lockdowns we have endured. Working with nature, as has been shown, has a calming effect on everyone.

Most of the people who take up a plot have never been on allotments before and most don't know what to expect. Plots sizes have shrunk over the years to better reflect the amount of time today's plotheolders have to spend growing fruit and vegetables. We offer three sizes. Beginners are encouraged to go for a 7m x 6m or a 10m x 6m plot, for which they pay £22.50 per annum; more experienced gardeners usually opt for a larger 15m x 6m plot, which cost an additional £10.00. Those rates haven't changed since we opened.



Sometimes, it's scary when you start something new like allotment gardening, so we make sure that everybody who joins the Barrow & Spade Brigade, the plot holders' association that manages the site on behalf of the parish council, is recommended a good, starter's guide to vegetable and fruit growing. In addition, there are numerous vloggers on YouTube that we suggest plot holders seek out, who give a visual guide to what you can plant each month and, more importantly, what you shouldn't be planting (because it's still too cold).



Most of the most recent plot holders have embraced the "no dig" method of gardening, whereby the underlying soil is not disturbed; instead, compost is added to the surface each autumn, winter or spring, on top of a layer of cardboard if the earth is full of weeds. By not digging, no weed seeds are brought to the surface, halving the amount of work required and therefore making life much easier. However, how you work your plot will depend entirely on you. If you need help, experienced gardeners will tell you how to overcome your problems, or suggest how you might do something better. Most of us started out with little or no knowledge and virtually everybody managed to grow 500 courgettes in their first year because they sowed too many plants! So, don't feel shy about requesting a plot – nobody will judge you.

Finally, gardening is perhaps one of the best stress-busters out there and when you eat your first fruit and vegetables the sense of satisfaction is wonderful.

Contact TheClerk@greatchartsingleton-pc.gov.uk for more information.



CLUBS AND GROUPS



**Please be aware that times and dates may
change due to coronavirus**

1st Great Chart Scouts Group - Contact Dave or Sally Gathern 01233 633966
Beavers (6-8.yo) - Friday 5-6:30pm
Cubs - (8-10.5yo) - Friday 6:30-8pm

1st Singleton Scouts Group - Contact Jill Lane 01233 641773/ 07799 886549
Beavers (6-8yo) Wednesday 5:15-6:30pm
Cubs (8-10.5yo) Wednesday 6:30-8pm

Singleton Rainbows - Fridays 4:15-5:15 at SVH.
Contact Izzy Hammond
singleton2ndrainbows@outlook.com

1st Great Chart & Singleton Guides - Mondays 6:30-8:30pm at SVH. Contact Laura Bowtell 07534 404445 gcsingletonguides@gmail.com

Speed Watch. Contact area co-ordinator Garry Parry 01233 640110 garry@whp.co.uk

Pilgrims Football Club - Contact Kyran Wilford 07984 352008 kyran@pilgrimsfc.co.uk

Ashford Community Woodland
ashfordcommunitywoodland@hotmail.co.uk
www.ashfordcommunitywoodland.org

Repair Cafe Ashford
Email: lenchitt@yahoo.co.uk
1st and 3rd Wednesday of the month at SEC

Great Chart & Godinton WI
Secretary Janet Goodwin: 01233 332510
Committee Member Pam Grigg: 01233 878013
19:30 on 3rd Wednesday of the month at Godinton Village Hall

Paek Ma Taekwondo - contact Master Geoff 6th Dan 07836 621060 at SVH.
Tuesday 5:30-6:30pm /6:30-8 Juniors and Seniors
Thursday 6:30-8pm Juniors

Dream Dragons Theatre - Wednesdays 7-10pm at SVH. Contact 01233 668767 or www.dreamdragons.co.uk

Stardust Studios - Children's dance classes at SVH. Contact Natalie Kitts 01233 625786/ 0984956 or info@starduststudios.co.uk

St Mary's Great Chart & Singleton. Sunday services - 9:30am at St Mary's Great Chart and 11am at St Mary's in SVH. Contact Libby Varley 01233 620371. office@stmarysgreatchart.org
www.stmarysgreatchart.org

Flora the Singleton Giant. Contact Peter 01233 610241 peter@singletongiant.org.uk

Great Chart Cricket Club
www.greatchartcc.co.uk

Ashford Concert Band. Thursdays 7-8:30pm at John Wesley School
www.ashfordconcertband.co.uk
info@ashfordconcertband.co.uk

Grace Fellowship at Singleton Road
www.gracefellowship.org.uk

Friends of Singleton Lake
Website: www.friendsofsingletonlake.co.uk

Ashford Volunteer Centre
Telephone: 01233 665535
Email: contact@ashfordvc.org.uk
Website: <https://ashfordvc.org.uk>

USEFUL INFORMATION



VENUE CONTACT DETAILS

Singleton Village Hall

Tel: 07887 575647

Email: bookings@singletonvh.co.uk

Great Chart Village Hall

Tel: 01233 610173

Email: greatechartvillagehall@yahoo.co.uk

Great Chart Playing Fields Buxford Pavilion

Tel: 01233 427407

Email: bookings@greatechartplayingfields.org.uk

Singleton Environment Centre

Tel: 01233 343885

Email: centremanager@singletonenvironmentcentre.org.uk

EMERGENCY CONTACT DETAILS

William Harvey Hospital
01233 633331

Kent Highways Service
03000 418181

Environment Agency
03708 506 506

Environment Incident Reporting
0800 80 70 60

South East Water
0333 000 0001

Floodline
0345 988 1188

UK Powernet
0800 029 4285

Power Cut
0800 31 63 105

Samaritans
116 123 email jo@samaritans.org

Kent County Council - Enquiries - Social Services
03000 41 41 41

Emergency Services **999**
Press **55** on a mobile if unsafe to speak
Text **60066** if deaf/hard of hearing

Kent Police - non emergency numbers
Call **101** or use **Live Chat** at www.kent.police.uk
Call **111** for medical non-emergencies

OTHER INFO

Allotments

Contact the Parish Clerk on 01233 616923
theclerk@greatechartsingleton-pc.gov.uk

Dog Warden Colin Leek

Tel: 01233 330340

Email: colin.leek@ashford.gov.uk

Mobile Library

Knoll Lane: Thursdays 15:50-16:05

Coronation Drive: Saturday (fortnightly) 10:55-11:25

Aske's Court: Friday 14:55-15:25



BOROUGH & COUNTY COUNCILLOR CONTACT INFORMATION*



ASHFORD BOROUGH COUNCILLORS

Weald Central Ward Councillor:
Jessamy Blanford

Tel: 01233 840050
Email: jessamy.blanford@ashford.gov.uk

Singleton East Ward Councillor:
Bill Barrett

Tel: 07449 454044
Email: bill.barrett@ashford.gov.uk

Singleton West Ward Councillor:
Kalysha Howard-Smith

Tel: 07586 332504
Email: kalysha.howardsmith@ashford.gov.uk

Washford Ward Councillor:
Neil Shorter

Tel: 07827 253400
Email: neil.shorter@ashford.gov.uk

KENT COUNTY COUNCILLORS

Councillor
Charlie Simkins

Tel: 01233 756705
Email: charlie.simkins@kent.gov.uk

Councillor
Dirk Ross

Tel: 07776 270416
Email: dirk.ross@kent.gov.uk

COUNCIL CONTACT DETAILS

Ashford Borough Council

Tel: 01233 331111
Web: www.ashford.gov.uk

Kent County Council

Tel: 03000 414141
Web: www.kent.gov.uk

PARISH COUNCIL STAFF

Parish Clerk
Aniko Szocs

Tel: 01233 616923
Email: theclerk@greatchartsingleton-pc.gov.uk

Assistant to the Clerk
Paula Cowperthwaite

Tel: 01233 616923
Email: paula.cowperthwaite@greatchartsingleton-pc.gov.uk

Parish Steward
Peter Walkden

Email: theclerk@greatchartsingleton-pc.gov.uk

Assistant Parish Steward
Robert Heath

Email: theclerk@greatchartsingleton-pc.gov.uk



PARISH COUNCILLOR CONTACT INFORMATION



CHILMINGTON WARD

Cllr Ian
McClintock

Tel: 07919 278828
Email: ian.mcclintock@greatchartsingleton-pc.gov.uk

GREAT CHART WITH SINGLETON NORTH WARD

Cllr Paul
Tate

Tel: 07850 082023
Email: paul.tate@greatchartsingleton-pc.gov.uk

SINGLETON EAST WARD

Cllr Katrina
Alexander

Tel: 07791 632493
Email: katrina.alexander@greatchartsingleton-pc.gov.uk

Cllr Janet
Sullivan

Tel: 01233 645400
Email: janet.sullivan@greatchartsingleton-pc.gov.uk

Cllr Malcolm
Wiffen

Tel: 01233 635016
Email: malcolm.wiffen@greatchartsingleton-pc.gov.uk

Cllr Kyran
Wilford

Tel: 07984 352008
Email: kyran.wilford@greatchartsingleton-pc.gov.uk

SINGLETON WEST WARD

Cllr Peter
Barker

Tel: 01233 610241
Email: peter.barker@greatchartsingleton-pc.gov.uk

Cllr Yolanda
Barker

Tel: 01233 610241
Email: yolanda.barker@greatchartsingleton-pc.gov.uk

Cllr Geoffrey
Darvill

Tel: 01233 642357
Email: geoffrey.darvill@greatchartsingleton-pc.gov.uk

Cllr Sally
Gathern

Tel: 07815 803862
Email: sally.gathern@greatchartsingleton-pc.gov.uk

WASHFORD WARD

Cllr Tom
Ackrill

Tel: 07780 470668
Email: thomas.ackrill@greatchartsingleton-pc.gov.uk

