

Great Chart with Singleton Parish Newsletter Spring 2019



Keep in Touch

Website: www.greatchartwithsingletonpc.kentparishes.gov.uk

Twitter: twitter.com/GCwSPC

Facebook:

facebook.com/greatchartwithsingletonparishcouncil

Inside this edition

Chairman's Report	Page 3-4
Borough Council Ward Boundary Change	Page 5-6
Pilgrims Football Club	Page 7
Launch of Dolly Parton's Imagination Library	Page 8
Great Chart & Godinton WI	Page 9
Hillcrest Allotment	Page 10
Friends of Singleton Lake	Page 11
Repair Café Ashford	Page 11
Knife crime– cut it out	Page 12
Singleton Environment Centre	Page 13
Pop-up Café	Page 14
Great Chart Cricket Club	Page 15
Parish Council meeting Dates	Page 16
Clubs and Groups	Page 17
Useful Information	Page 18
Parish Contact Details	Page 19
Easter Service	Page 20
Advertising	Page 20

Great Chart with Singleton Parish Newsletter is published by the Parish Council and is distributed to every house within the parish. We are pleased to accept submissions for articles, events and group details. We are also able to offer advertising and sponsorship opportunities for local businesses.

Please contact the Clerk on 01233 616923 or email theclerkgcwspc@gmail.com. Any views or opinions in this newsletter are solely those of the authors and do not necessarily represent those of the Great Chart with Singleton Parish Council.

Newsletter advertising

We are able to offer advertising and sponsorship opportunities for local businesses. If you are interested please contact the Clerk on 01233 616923 or email to theclerkgcwspc@gmail.com

Chair's Report



Ian McClintock

Welcome to the last newsletter before the Borough & Parish elections on 2nd May, I must admit I find the process of having an election quite unsettling as I am a great believer in “if it's not broke, don't fix it!”, simply because we have a great team of Parish Councillors who work very hard for our Community. Every four years we get the opportunity to escape the PC, if that is the wish, and perhaps let someone else take the rudder and create some new ideas – and that is always a good thing.

Some of you may have noticed that there has been a hive of activity amongst the hedgerows on the A28 bypass recently, I initially thought it was KCC installing a gate on the footpath nearby to prevent quad bikes driving down passed the allotments and causing damage to the playing fields, but after a couple of emails I have found out it is KCC, but the hedge is full of Ash trees many of which are infected with a fungus that causes Ash dieback, so they have had to be removed. Although this may look tidy but we can do without removing trees on this sort of scale, but the disease is quite contagious. Now some of the houses will notice the traffic noise from the road near to them, but I am told that the hedge will thicken up over time.

The PC has been very busy since the last issue; first we have unveiled a new sign for Singleton. We were lucky to have the sign designer, the creator of the wooden sculpture that makes up the centre of the sign and also the guys from Blackforge Arts that made the sign all attend the ceremony, which was really well supported by parishioners.



You may have also noticed that the Great Chart village sign has been removed for renovation after some rot was found in the base of the wooden post, we are taking this opportunity to renovate the whole sign before it is returned in April.

We have also installed some new outdoor gym equipment on the playing field next to the new play kit in Singleton Road, we will be having an official unveiling in May that we are hoping to get a professional sportsman to help with so look out for posters and social media notices for this.

We also unveiled our Snow pup to the public. Again, this was really well attended – Snowy was officially unveiled by our Ward Member & Mayor, Cllr. Jessamy Blanford and Snowy's designers, Kaya Cook and Robyn Bailey, who are 2nd year art students from Ashford College.

Snowy has taken up residence at the Singleton Environment Centre for a few months, after which we plan to send him on his travels around the Parish, including a brief stay back in the Pilgrims Hospice, where he spent most of his time when the Snow Dogs art trail was on. After that he will visit lots of organisations in the parish, a full list will be published when we have worked out his travel schedule.



I mentioned earlier about elections, there will be an article about the (Borough) Ward boundary changes that are taking place after the election on 2nd May, later in this issue, but the main point of this is that the PARISH boundary has not altered much so there is nobody that has been “moved” out of the parish – more will be explained later.

My last job for this issue is to publicly thank all of my fellow members of the Parish Council for their hard work over the last 4 years and in most cases much longer – our Parish Council is very much a joint effort and there is not one of them that I would not like to continue for the next term, but I also know that some of them are not standing for election again, although this is a shame, but their community spirit will not diminish because they leave the PC. I know all of the PC will join me in thanking our very hard working Parish Clerk, Aniko, for all of her support and enthusiasm she has shown for our Parish during this term and I know she will continue to work hard for our Parish with our newly elected Parish Council after May.

Ian McClintock

Chair- Great Chart with Singleton PC

Borough Council Ward boundary changes 2nd May

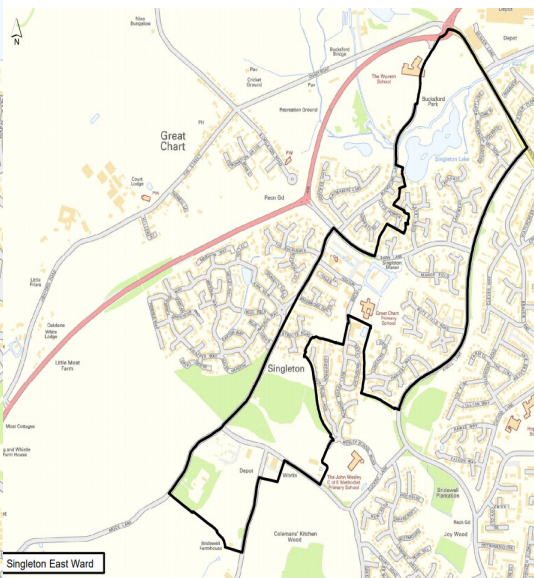
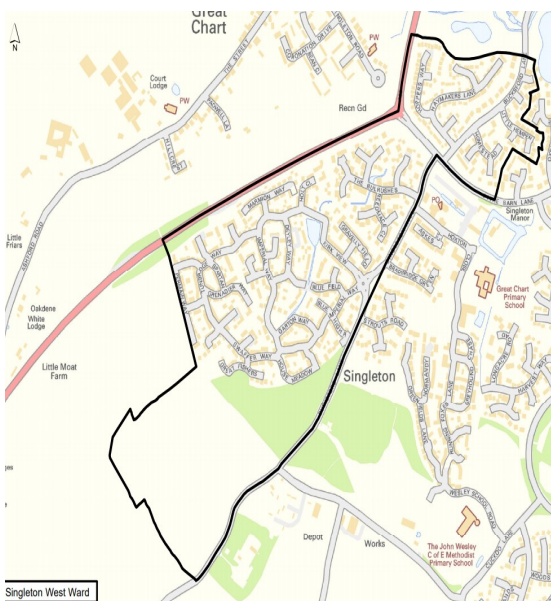
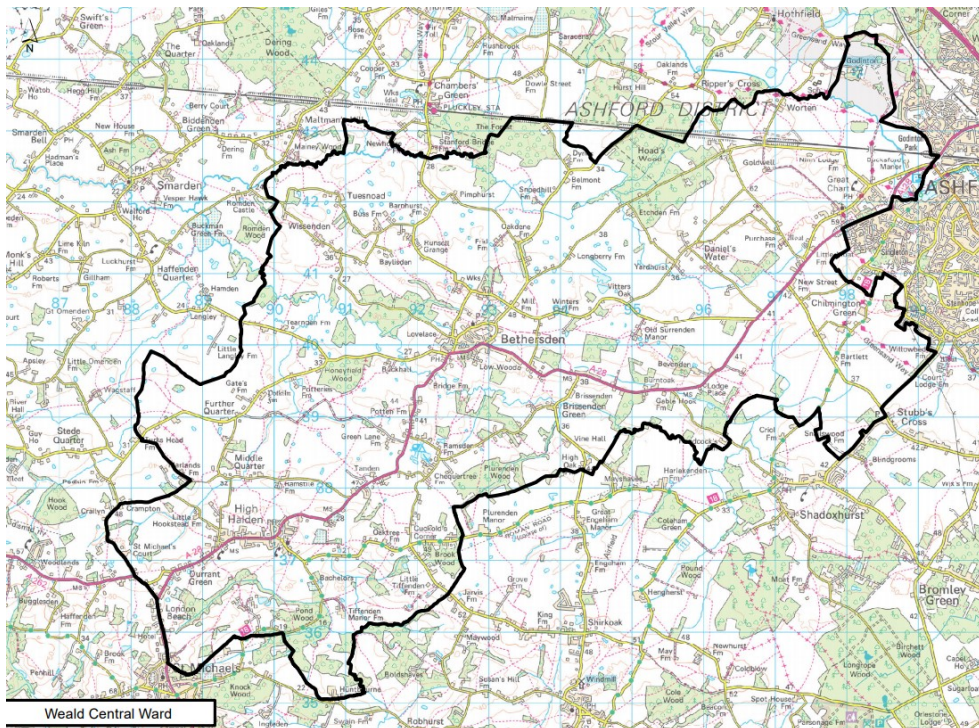
In our last edition I mentioned that we would be getting another Parish Council (PC) member following an addition for the growth of Chilmington – but it seems the Boundary Commission has trumped this decision by making some adjustments to the Borough Council (BC) Ward Boundaries, the result of which has left us with 11 PC Members. These are split as follows: Four each in Singleton East and Singleton West and one each in Chilmington, Washford and Great Chart.

There is, however, a change to the Borough Wards within our Parish (which is complicated if taken together), but less so if I try to just talk about BC Wards. Singleton is now to be divided into two Wards, with a Ward Member for each; these are called Singleton East & Singleton West. Great Chart has been put into a two member ward with Bethersden, High Halden and part of St Michaels and this is called Weald Central. Finally, Running Foxes Lane and the all of the roads coming off it are now to be in Washford Ward, part of which is in Kingsnorth and will be represented by another Ward member that will cross both parishes. So after the election we may have four Borough Councillors attending our PC meetings, as if two were not enough already! Our two KCC Members (Dara Farrell and Charlie Simpkins) are not changing or being re-elected at this time.

The main point to emphasise is that the PARISH Boundary is changing very little and we are not gaining or losing any dwellings, so nobody has “moved” to a different Parish, which is of great relief to me as I would consider that a complete nightmare! Our Parish is growing slightly larger to encompass the whole of the Chilmington development site, in readiness for Chilmington to have its own Parish Council in about 8 years time. This will mean that our Parish will now extend as far as Long Length (previously in Kingsnorth) and also as far as Tally Ho Road (previously in Shadoxhurst).

Of course all of this is only correct if I have fully understood all of the complexities of the adjustments made by the Boundary Commission, if not I will have to make the corrections in the next issue – I am hoping to include the maps from the BC web site showing the new Wards, but I have found the Weald Central Ward covers such a vast area, this one may be omitted.

Ian McClintock



Map source: <https://www.ashford.gov.uk/councillors-meetings-and-elections/elections-and-electoral-registration/polling-districts-and-polling-places-interim-review-2018/new-ward-maps/>

Pilgrims Football Club

Pilgrims FC is a Charitable Football Club based at Great Chart Playing Fields since the 2014/15 season. We are a club that believes every player matters, regardless of ability, everybody is entitled to play football and we are happy to provide this to our members. The great thing about being in such a fantastic parish is the support we receive from the Playing Fields Association, Parish Council and that 85% of our members live within the Parish. We run teams from Under 8s to Seniors (16+).



Our U13's were crowned Ashford & District Youth League Under 13 Pacific Division League Champions on Saturday 9 March 2019 after their 9-2 home victory against Hawkinge Youth U13.

Two seasons ago, the team went a whole season without winning a single game and now they can call themselves league champions. I could not be prouder of the boys hard work this season and long may it continue.

Huge congratulations to the squad, Damien, John and Lee for all the blood, sweat and tears they put into being the first team to win a league title at Pilgrims since 2008.

We are hoping that our U12s can secure a league and cup double over the coming weeks so watch this space and lookout for updates from Pilgrims FC in the next parish newsletter

If you would like any further information regarding Pilgrims FC, please get in touch with Kyran Wilford, Trustee & Club Secretary on 07984352008 or kyran@pilgrimsfc.co.uk

Launch of Dolly Parton's Imagination library in Singleton

Sarah Jayne and Andy crust from Singleton are proud to be founders and affiliates of the Ashford imagination library.

Dolly Parton's Imagination Library of the United Kingdom is a free book gifting organisation devoted to inspiring a love of reading in the hearts of children everywhere. Each month, enrolled children receive a high quality, age-appropriate book in the post, free of charge. Children receive books from birth to age five.



In December of 2007, Dolly Parton travelled to London for a special announcement about her Imagination Library. To celebrate the programme's launch in the United Kingdom, a group of school children gathered on the steps of the Savoy Hotel to sing Dolly's song "I Believe in You." The Imagination Library's coverage in the UK includes England, Northern Ireland and Scotland.

Book selections in the UK include popular characters such as Peppa Pig and beloved authors and illustrators including Lynley Dodd.

Additionally, the Royal National Institute of Blind People (RNIB) assists in the conversion of select titles to braille and audiobooks for children in the United Kingdom who are blind or partially sighted.

Great Chart & Godinton WI

As the Institute name suggests it is the amalgamation of two smaller Women's Institute groups. This happy union now has more than thirty members from a wide variety of backgrounds.

Great Chart is a village and Godinton a suburb of the fast expanding town of Ashford. The Institute keeps in touch with both areas by supporting local events such as the Tombola Stall we manned at Great Chart's School Fête. At Godinton we held a Coffee Morning in the local Assisted Housing Complex, a very enjoyable event for both residents and WI members.

To seal the amalgamation of these two Institutes, members are producing individual crafted squares to form a new covering for our Presidents Table. We aim to go on building links within our joint communities and encourage more women to take part in what we have to offer and prove we are stronger together!

General meeting take place on the third Wednesday of each month and activity sessions on the first Wednesday of each month.

We play darts at the New Chimneys Public House on Godinton Park every Thursday and we have a Knit & Natter session on the fourth Monday of the month, between 10-11.30am at the Grapevine Cafe in Singleton Village Hall.

Programme

- ◆ **General meeting:** April 17th Art of Hand Bell ringing
- ◆ **Activity:** 3rd Easter Crafts
- ◆ **Darts:** Thursday at New Chimneys Public House Godinton
- ◆ **Knit & Natter:** April 29th (as 4th Monday is Easter Monday)
- ◆ **General meeting:** May 15th Resolutions plus other activities.
- ◆ **Activity:** 1st Flower Arranging
- ◆ **Knit & Natter:** May 20th (as 4th Monday is a Bank Holiday)
- ◆ **General meeting:** June 19th Talk by Fire Services
- ◆ **Activity:** 5th Fish & Chips by the sea
- ◆ **Knit & Natter:** 24th at Grapevine Cafe Singleton Village Hall

For further information please contact :- **Janet 01233 332510**
or committee member:-**Pamela 01233 878013**

Hillcrest Allotment

For the plot holders of Hillcrest Allotments at Great Chart, March and April mark the start of the gardening year. It is when we put in our potatoes, onion sets and lots of varieties of different plants and seeds. However, most of the produce won't be available until mid-summer. Even autumn planted onions, garlic and broad beans won't be available quite yet. Nevertheless, those of us with established beds of strawberries and other soft fruit will see the benefits as of late May and early June.

In the meantime, there is soil to be dug, weeds to remove and manure to spread. It sounds like a lot of hard work, but it is all great fun. Not only do you get to spend lots of time outdoors doing things that are good for your health, but you also get to meet lots of similarly minded people, who'll give you tips, advice and even spare plants, as well as recommendations as to where to source value for money plants and seeds.

If you fancy giving it a go, the most you'll ever pay is £32.50 a year and £10 less than that if you want a starter plot, so there's no financial excuse for not joining the Barrow & Spade Brigade.

You might also be interested in trying to grow fruit and vegetables using the no-dig method.

Traditionally, gardeners have dug their plots each autumn to remove weeds and incorporate compost or manure. However, there is a school of thought that says this is totally unnecessary. Instead of removing weeds, you can spread cardboard on the ground then top it off with homemade compost or manure - and just leave it. The cardboard, which stops the weeds from growing, decomposes over time and mixes in nicely with the compost that is already in place. Much of this material is then taken underground by worms, increasing both soil fertility and organic matter. Anything planted in this wonderful mixture needs less water and looking after, with no need to endlessly take out weeds, since you haven't greatly disturbed the soil structure, so the weed seeds that are there never germinate. Over time, you get fewer slugs and snails and fewer diseases, since natural predators kill off many of the nasties that might otherwise cause problems.

Making your own compost is fun, too, and is where most of the heavy work for your plot is concentrated.

Results from no-dig suggest yields will grow by at least 5% and the amount of time you need to dedicate to gardening is drastically reduced. It is win-win all round and well worth a go.

If you have a patch of particularly weed-infested land, you can make it usable simply by spreading manure and compost on the surface and then covering it with black plastic or weed suppressing fabric and then leaving it for six months to a year by which time you will have fantastically fertile soil and few if any weeds. If, in the meantime, you want to use that land for a crop, you simply make a slit in the plastic and plant something like a potato, cucumber or tomato. They will take root and grow amidst the weed killing carnage brought about by the black plastic stopping light and water reaching other things trying to grow beneath.

Simples, as those rather annoying meercats might say.

If you fancy a plot please contact theclerkgcwspc@gmail.com

Friends of Singleton Lake

Friends of Singleton Lake had a fantastic time helping out with the Yellow Fish Workshop in the February half-term. We helped teach about pollutants and how feeding the ducks and leaving too much food or the wrong type of food can become a pollution problem to the lake and surrounding river.

Our Stour, a group run by Kentish Stour Countryside Project, taught the children about pollution and litter in rivers and the harm this can do to wildlife, whilst Southern Water taught everyone that “only rain should go down the drain”!

Oh, and ‘flushable’ wipes may indeed flush but they NEVER decompose, just clog up our pipes and drainage systems! So try to avoid flushing anything down the toilet apart from the 3 P’s: Pee, Poo and Paper!



Look out for info soon for our next events:

- ◆ Sunday 14th April Forest Therapy
- ◆ Saturday 25th May River Dipping
- ◆ Friday 28th June Poetry Session



Bin it? No way!

Have you got an old furniture that needs a new lease of life? Or an old radio that doesn't work anymore? Don't bin it, bring it to Singleton Environment Centre where the Repair Café can fix it for you. The Café operates in the afternoon between one and four, on the first and third Wednesday of each month.

Repair # Recycle # Reuse

Knife crime – cut it out

It is illegal to

- Sell a knife (including cutlery or kitchen knives) to anyone under 18.
- Use a knife in a threatening way (even if it is a legal knife).
- Carry, buy or sell any type of banned knife – no matter what age you are.

The following are offensive banned weapons:

- Flick knives – also called 'switchblades' or 'automatic knives'
- Butterfly knives
- Disguised knives – where the blade is hidden, for example in a belt buckle or fake mobile phone

There are many other knives that are illegal to carry on your person. Call **101** or speak to your local community officer for a full list of banned knives.



If you choose to carry a knife, you are not only risking your own safety and future, but others too.

If you do not carry a knife, you cannot use it.

Do not take the risk.

Remember

- Carrying a weapon is illegal. You could be arrested, taken to court and given a criminal record, even if it is an imitation weapon.
- The maximum penalty if you are found carrying a knife is **four years** in prison and a fine of **£5,000**.
- Old weapons, even if stored away, can injure or kill if they get into the wrong hands.



Report it

If you know someone who carries a weapon, report them to police. They could end up harming you, themselves or someone else.

For all non-urgent crime reports or enquiries call **101**.

In an emergency, if life is in danger or crime is in progress, call **999**.

Alternatively call Kent Crimestoppers, anonymously on **0800 555 111**.



**Kent
Police**

**Protecting and serving
the people of Kent**

Singleton Environment Centre

Up-coming Events:

Early notice of our Summer programme:

Hedgehogs

Saturday 15th June 10:30am to 12:30pm £5 per head

An illustrated talk by Ian Gray of the Kent Mammal Group

Summer Quiz

Saturday 29th June 7:30pm to 10:00pm £5 per head

A fun evening of general knowledge quizzing. Teams of four to six, bring your own drinks and snacks. Popular, so book early!

Environmental Activities and Open Day

Saturday 6th July 10:00am to 3:00pm This is **free** event

Come and enjoy a day of activities and demonstrations all with a positive environmental twist! How to go plastic-free, why vegan food is becoming increasingly popular and learn more about bees and their products. Lots of free tasters and samples for the adults and exiting things to do all-day for the children. And it's FREE!

Repair Café-Ashford

Saturday 20th July 10:00am to 1:00pm Free entry

Bring along your small electrical or mechanical items that need repair and see if our Repair Café group can fix the, free of charge! Demonstrations of practical skills throughout the morning.

Knit, Crochet and Craft for the Environment

Saturday 10th August 10:00am to 1:00pm Free entry

Learn to knit, crochet or quilt with our experienced crafters. Get ideas on how to upcycle discarded items and be inspired by the demonstartions throughout the morning.

Bank Holiday Fun Day

Saturday 24th August 10:00am to 3:00pm This is a **free** event

Storysack, pond dipping, treasure hunt and other activities .



Great Chart

Pop-Up Café and Information Hub

Village Hall

Wednesday, 8th May 2019
Wednesday, 12th June 2019
Wednesday, 10th July 2019
Wednesday, 7th August 2019
Starting at 9.30 am

Come and get together with old friends and new. Have a cuppa and a delicious slice of cake. We'll have all sorts of local information available or you can just come for a chat.

Please help us to spread the word. Everyone welcome ... see you soon!

Can't get there under your own steam? Call us and we'll see if we can help.

Ani- Parish Clerk **01233 616923** or email to **theclerkgcwspc@gmail.com**



Friends of Rural Kent Coffee and Information Project



FoRK

Great Chart Cricket Club – New members welcome

By the time you read this, Spring will (hopefully!) be with us and with the warmer weather comes the new cricket season.

Unfortunately, as you may be aware, grassroots cricket is going through a bit of a crisis at the moment with many village teams, both locally and nationally, struggling for numbers from time to time.

We have certainly not been immune to the trend and a couple of years ago, were forced to discontinue our Sunday 2nd XI - although we hope this is only a temporary measure.

However, Great Chart Cricket Club is lucky enough to have some of the best facilities in East Kent for cricketers and we are always on the lookout for new members of all ages and abilities.

Currently we run a Sunday XI playing in the Kent Village League and a Saturday 'friendly' XI, catering for the slightly less competitive side of the game (although we still play to win!).

We also run a thriving 'Colts' section with teams for all age groups and we welcome social members if you just want to come along and take advantage of the club bar.

If you are thinking of taking up the game, or if you have played in the past and would like to get back into cricket, please check out our website for details on how to contact us:

www.greatchartcc.co.uk

We will also be holding our hugely popular boot fairs again and the dates this year are:

- Monday 27th May
- Monday 26th August
- Sunday 6th October

Paul Arnup

Secretary - GCCC

Parish Council Meeting dates

Meetings are usually the second Monday each month, with two meetings in May for the Annual Parish Council meeting (when the chairman is elected) and the Annual Meeting of Electors when the Parish Council hosts a meeting to report on the previous year, both from the Parish Council and many Parish Organisations. There is not usually a meeting in August due to holidays.

Monday 13th May 2019 Annual Parish Council meeting	Singleton Village Hall 7.30 pm
Monday 20th May 2019 <i>Annual Meeting of the Electors</i> <i>This meeting alternates between</i> <i>Great Chart & Singleton each</i> <i>year and refreshments will be</i> <i>provided</i>	Singleton Village Hall at 7 pm
Monday 10 th June 2019	Great Chart Village Hall at 7.30 pm
Monday 8 th July 2019	Singleton Village Hall at 7.30 pm
Monday 9 th September 2019	Great Chart Village Hall at 7.30 pm
Monday 14 th October 2019	Singleton Village Hall at 7.30 pm
Monday 11 th November 2019	Great Chart Village Hall at 7.30 pm
Monday 9 th December 2019	Singleton Village Hall at 7.30 pm

There might be extra meetings added over the year for public Committee meetings, these will be advertised as required.

Clubs and Groups

<p>Beavers—Thursdays 5:30-7 pm at GCVH, boys and girls aged 6-8 Contact Shelley Bowman shelley_bowman@yahoo.co.uk</p>	<p>Singleton Rainbows Wednesdays 4:15-5:15 pm at SVH Fridays 4:15-5.15 pm SVH</p>
<p>Cubs—Fridays 6:30-8 pm at GCVH boys and girls aged 8-10 ½ , Contact Jill Lane 01233 641773/ 07799 886549 jillmlane@msn.com</p>	<p>1st Great Chart and Singleton Guides Mondays; 6:30 - 8:30 pm at SVH- Contact Terry Lockwood – 07704 359434</p>
<p>Scouts—Mondays 7-9 pm at GCVH boys and girls aged 10 ½ -14 – contact Dave Gathern 01233 633966/ 07961202097 Over 14? We also run an Explorer Group</p>	<p>Dream Dragons Theatre Wednesdays 7-10 pm at SVH contact 01233 668767 or www.dreamdragons.co.uk</p>
<p>Paek Ma Taekwondo Tuesday 5.30pm-6.30pm Beginners 6.30pm-8pm Advanced Thursday 6.30pm-8pm Juniors 8pm-9.30pm Seniors SVH– Master Geoff 6th Dan - 07836621060</p>	<p>St Mary's Great Chart & Singleton Sunday services 9:30am at St Marys in Great Chart; 11am at St Mary's in Singleton Village Hall, Hoxton Close E mail rector@stmarysgreatchart.org Website www.stmarysgreatchart.org Pastoral Care: 07756 805507</p>
<p>Youth Club (Coming back soon) Fridays 7-9 pm SVH Ian McClintock email: ian.mcclintock59@yahoo.co.uk</p>	<p>Speed Watch-Gary Parry Great chart with Singleton Speedwatch Coordinator 01233 640110 gary@wthp.co.uk</p>
<p>Great Chart Cricket Club www.greatchartcc.co.uk</p>	<p>The Grapevine Community Café at Singleton Village Hall Mon & Thu am</p>
<p>Singleton Giant Email: peter@singletongiant.org.uk Phone: 01233 610241</p>	<p>Stardust Studios – Children's Dance Classes— Classes held at SVH, Contact Natalie Kitts 01233 625786/07899 844956 info@starduststudios.co.uk</p>
<p>Pilgrims FC (Football Club) Contact Name: Kyran Wilford Contact Number: 07984352008 Email: kyran@pilgrimsfc.co.uk</p>	<p>Grace Fellowship at Singleton Road http://www.gracefellowship.org.uk/</p>
<p>Friends of Singleton Lake Email: friendsofsingletonlake@outlook.com</p>	<p>Ashford Community Woodland Email: ashfordcommunitywoodland@hotmail.co.uk</p>
	<p>Barrow & Spade Brigade Email: theclerkgcwspc@gmail.com</p>

Abbreviations:

SVH-Singleton Village Hall—GCVH-Great Chart Village Hall

Useful Information

Allotments

Parish Clerk – 01233 616923-
theclerkqgcwspc@gmail.com

Litter/Overflowing bins/ fly-tipping:

streetscene@ashford.gov.uk

Dog Warden

Colin Leek – 01233 330340 –
colin.leek@ashford.gov.uk

Mobile Library

Knoll Lane: Thursdays 15:50-16:05
Coronation Drive: Saturday
(fortnightly) 10:55-11:25
Aske's Court Friday 14:55-15:25

Emergency Contacts

Emergency Services 999 For non-emergencies police **101** or email
csu.ashford@kent.pnn.police.uk

Environment Agency, General Enquiries: **03708 506 506**

Floodline 0345 988 1188 Incident Reporting **0800 80 70 60**

UK Powernet General Enquirers **0845 601 4516**

Power cut **0800 31 63 105** and the new number **105**

Gas Leaks **0800 111 999** South East Water **03330 001122**

Kent County Council/ Enquiries/ Social Services **03000 414141**

Booking Venues

Great Chart Village Hall— Tel: 01233 610173

Email greatechartvillagehall@yahoo.co.uk.

Singleton Village Hall—Tel:07887 575647,

Email: bookings@singletonvh.co.uk

Great Chart Playing Fields—Buxford Pavilion— Tel: 01233 427407

Email: gcpfa@barkercomputersolutions.co.uk

Parish Contact Details

Great Chart with Singleton North Parish Councillors

Ian McClintock
07919 278828
ian.mcclintock59@yahoo.co.uk

Yolanda Barker
01233 610241
y.barker@barkermanor.co.uk

Peter Barker
01233 610 241
p.barker@barkercomputersolutions.co.uk

Paul Tate
07850 082023
paultatepc@gmail.com

Malcolm Wiffen
01233 635016
malcwiffen@btinternet.com

Singleton South Parish Councillors

Geoff Darvill
01233 642357
geoffsvhpc@gmail.com

Malcolm Eke
01233 638062
malcolmeke@aol.com

Sally Gatherern
07815 803862
sallygatherern@aol.com

Angus Willson
07976 239295
angus.willson@btinternet.com

Janet Sullivan
01233 645400
janetsullivan36@msn.com

Great Chart and Singleton North Ward Councillor

Jessamy Blanford—01233 840050
jessamy.blanford@tiscali.co.uk

Kent County Councillor

Charlie Simkins -01233 756705
charlie.simkins@kent.gov.uk

Singleton South Ward Councillor

Bill Barrett—07449 454044
barrettwbarrett@aol.com

Kent County Councillor

Dara Farrell
Dara.Farrell@kent.gov.uk

Parish Clerk - Aniko Szocs—01233 616923 or theclerkqcwspc@gmail.com

Parish Office Singleton Village Hall, Hoxton Close, Ashford TN23 5LB
Office opening hours 9 am -1pm other times by arrangement.

Easter Service

14th April—Palm Sunday

9.30 - Morning Service at St Mary's Great Chart 11 am - Morning Service at St Mary's Singleton

17th April 10-12 noon –Activity morning at Singleton Village Hall

18th April - Maundy Thursday: 7 pm information Holy Communion Service in Great Chart Village Hall followed by mediation in the Church

19th April - Good Friday

10.30 am - All age service at St Mary's in Singleton, 2pm - Last hour at the

21st April - Easter Sunday

7 am Sunrise Service Wye Downs, 9.30 am—Holy Communion Service at St Mary's Great Chart, 9.30 am—Breakfast at St Mary's in Singleton

11 am - Holy Communion Service at St Mary's in Singleton

Thinking of selling or letting your property in Great Chart?

I can give you straightforward advice regarding the value of your house. Please call me on 01233 506260



Sarah Holgate
Specialist Rural and Village Agent



www.hobbsparker.co.uk

HOBBS • PARKER
The Villages