

Great Chart with Singleton Parish Council Annual Report Financial Year 2020-2021

Community events



Singleton Environment Centre

Singleton Lake



Great Chart

Contents

Foreword

Chair's Annual Report

Clerk's Annual Report

Cllr Bill Barrett's Annual Report

Cllr Kalysha Howard-Smith Annual Report

Police Community Support Officer

Great Chart Village Hall

Great Chart Primary School

Singleton Giant

Singleton Environment Centre

Great Chart & Godinton WI Group

Great Chart Cricket Club

Great Chart Remembers

Singleton Scout Group

Finance Report

Grants Allocated

Earmarked and Reserved Funds

Great Chart with Singleton Parish Council members contact details

Parish Council Staff and contact details

Thank you

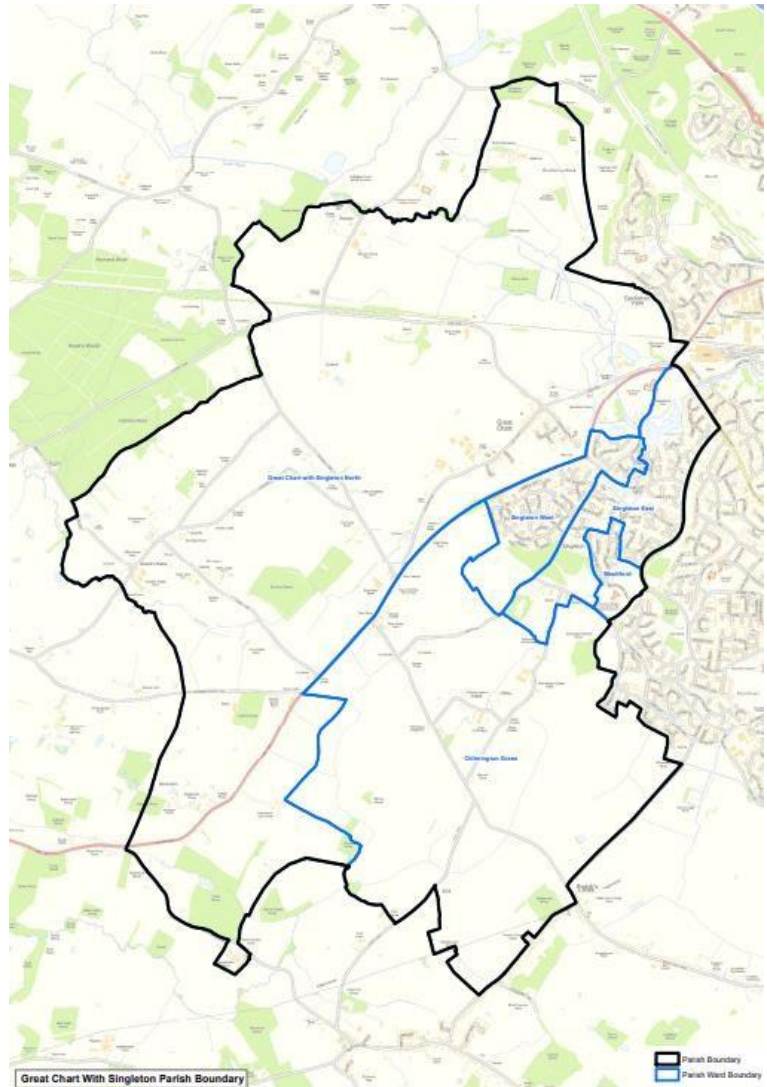
Foreword



This report is a good opportunity to look back on the past year's activities, starting with the Chairman's and Clerk's report, followed by the local Councillor's reports.

Located on the south-west side of Ashford, Great Chart with Singleton Parish is home to 6801 residents (2011 Census)¹. The parish borders several other parishes; Bethersden to the west, Hothfield to the north, Kingsnorth to the south and Shadoxhurst to the south west. On the east is South Ashford which is currently an un-parished area. The Parish Council works in close partnership with neighbouring parishes as well as Ashford Borough Council and Kent County Council to improve the area for its residents.

Despite the challenges the Parish Council faced due to Covid, the financial year 2020-2021 has been a productive year. The council started to maintain parish owned land, held a couple of events and made improvements around the parish.



The report will include an overview of the parish's financial accounts. It will also provide a summary of some local clubs, societies and organisation's activities.

You can view the large [map](#)

1 GREAT CHART WITH SINGLETON PARISH

¹ Ashford Borough Council Year Book

Chair's annual Report

Chairs Review June 2020/21

Under normal circumstances I would normally start this by welcoming everyone to our Annual Meeting of Electors, but I am sure as you all know things have been far from anywhere near normal over the last year. I remember writing this report last year saying that we were in strange times, I never thought we would be still talking about Covid-19 over 12 months later, but many things have changed in the last year.

We had just started having all of our Parish Council (PC) meetings remotely, which surprisingly worked quite well, or at least it did after we had got the hang of it. Of course periodically I think each one of us had our own technical issues, but we managed to carry on the work for our Parish, even though all of our planned events had to be cancelled.



Last year, I mentioned the new noticeboards that were about to arrive. These are all in place now and a few more were added in places that we felt needed one. When the last two are installed in Chilmington there will be 15 in total. All in a great green colour with the Parish name on them. One slight annoyance is during our various lockdowns, some kind person took it upon themselves to post some sticky labels on the outside of the Perspex. The glue seemed to contain something that etched into the plastic, and we have had to replace the Perspex in a few of them.

The Chilmington development has grown slowly over this last year. There are approximately 120 new households within the Parish. We welcome the new residents in our parish. I understand there may be still a few teething problems and accessibility to the outside world. The Chilmington Green School is about to open in September with over 120 children moving in. I am hoping the PC will have a great working partnership with them as we do with the other primary schools within the parish.

The existing primary schools are on each end of Hoxton Close & Wesley School Road and the PC has successfully campaigned to Highways to reduce the speed on these roads to 20 mph and all of adjoining the roads too. This is a great step forward to make all of these roads much safer. The consultation has finished and Highways are very shortly going to put in some small road markings to let everyone know about the reduced speed. Both schools joined in a competition to design a poster about the new speed limit. Myself and a couple of other Councillors had the very difficult job of judging the entries, which were of a very high standard. The results will be shared across our social media and the winners will have the designs made into banners which will be shown outside the schools. We did pick out some special entries that we will also be using on our website and in some other places too.

The Singleton Environment Centre extension was delayed hugely due to the virus. Finally in May of this year, we were handed over the completed new building, and within

the limits of the pandemic, it has already been used by several groups. I understand the Chilmington CMO will be holding their AGM in the extension in July. We are planning a grand opening on Saturday 31st July, so look out for notices nearer the time. I am sure you will hear more about this from the Chair of Singleton Spaces later in this review.

Due to change in legislation that allowed local authorities to hold meetings remotely, the May meeting was held face to face. The council decided to merge both of our May meetings as it was too soon to invite the usual 50 or so people who attend the Electors meeting into a village hall. During the meeting we did elect the Chair, Vice-chair and all of the committees this year. I must thank my fellow Councillors once again for their confidence in me as I remain Chair for what is to be my 23rd year on the PC.

Last year I mentioned that our Caretakers were about to change their name and they are now called Parish Stewards as this fits in much better with the work they continue to do all over the parish. Our newsletter shows some of their work every month. I must thank Peter and his assistant Rob for their hard work over the last 12 months. As they mainly work outside, they were able to work throughout the lockdown, with Rob only taking time off during the first lockdown.

Having just mentioned the newsletter – I hope you have noticed we have changed the format and gone to an A4 publication. Some of the extra cost being offset by a few adverts, but we will not let these flood the issue and I hope you agree they are a great publication. We try to produce quarterly and deliver to every household in the Parish, so watch out for them and let us know if you think you have been missed.

I have already thanked my colleagues on the PC for their support, but I must thank them, with a special mention of Malcolm, our Vice-Chair, for all their hard work during the last 12 months. Reading the many papers, reports and planning applications that were still coming through despite not meeting face to face. We have a great team, made up of lots of diverse personalities, ages and experience who all choose to be a Parish Councillor in order to make our parish a little better for everyone. The parish councillors work hard, and we are very grateful.

As always, I must thank the numerous teams of Trustees that oversee so many organisations within our parish that the PC is lucky to be partnered with, from Village Halls to War Memorials – all of these Trustees work for free to manage these vital assets within the parish, again for the benefit of the whole parish and all of our parishioners.

My final thanks must go to the most important person within our organisation and that is Aniko our Clerk, who without her diligence and hard work this year, I am not sure we would have come out of the pandemic with nearly so much achieved – last year I mentioned that Paula had joined us as an Assistant to the Clerk, she has passed her CiLCA and is now our Deputy Clerk, so again congratulations to Paula. I am so pleased they work so well together, the only downside to this is there are now two of them to watch what I get up to!

I think I must finally wish all of our Parishioners good health; I hope that Covid has not touched you too much and I wish all of you well for the next year. I hope we are nearer to getting back to some sort of normality for everyone, but I fear normal will be a bit different for a good while yet.

Cllr Ian McClintock - Chair Great Chart with Singleton Parish Council



Photos

Top left: Litter Pick at Singleton Lake

Middle left: The new extension at Singleton Environment Centre

Bottom left: The new format newsletter

Top right: The viewing room at Singleton Environment Centre

Middle right: Cuckoo Park play area, sand topped up

Bottom middle: parish council grant helped to lay Astro turf for Pre-school

Bottom left: Signs at Cuckoo Park to remind residents of the COVID rule

Clerk's annual Report

When the 2020-2021 Financial year began, the world was still getting used to the changes the pandemic had brought upon us. In the early days we all hoped that soon we could return to normal, but a year on we still have some restrictions in place. But it is not all doom and gloom and there is a light at the end of the tunnel. The vaccine to control the virus is being rolled out and most residents received at least one dose meaning life can return to some normality.

Despite all the challenges the parish council was able to continue to work hard and managed to close another productive and successful year. The parish council was in a fortunate position to be able to hold council meetings remotely. There were initial technological challenges for us as we tried to navigate the world of technology, but Cllrs quickly adapted, and the council managed to hold successful meetings.

Improvements around the parish

I am pleased to highlight some of the improvements the parish council has made in the past year. These includes the addition of two new dog poo bag dispensers. The dispensers are replenished regularly with poo bags and it's free to all residents. The parish now has 8 dispensers altogether dotted around. Thank you to Ashford Borough Council the parish also benefitted from new bins. These bins are multifunctional and can take both refuse and dog waste. The parish council is particularly pleased to have been able to replace all the old wooden noticeboards with new aluminum ones. The noticeboards are open on the righthand side to local groups and charities to advertise their events.

The parish council is pleased to say that working in partnership with Kent County Council a scheme will be introduced to reduce speeds to 20 mph from Hoxton Close all the way to Cuckoo Lane's junction. The scheme received positive support from most residents and will be implemented in July 2021. The speed limit restriction will also include the roads adjoining Running Foxes Lane. Also, thanks to Kent County Council, a large part of a footpath running alongside Great Chart Primary School has been replaced, making it safer for the residents.

Singleton Environment Centre has seen the addition of a new classroom and viewing room. This will allow the centre to host more educational events. I must thank Cllrs McClintock and Wiffen for all their hard work and effort to make this project a successful one. The finished classrooms are of outstanding quality, and we hope that many residents will have the opportunity to use the new facility. I would like to thank the Centre manager John Alexander and the staff at Footprints Café. They have all worked extremely hard during these strange times.

Community engagement events

The Parish Council held a few events, adhering to COVID guidelines to ensure these were safe for residents to participate in. During the summer the Parish Council hosted their annual picnic event, free hot dogs and burgers were served to residents whilst kids could take part in craft activities. The Scarecrow Trail proved to be a huge success too with the residents and saw some amazing entries. The parish council's scarecrow was displayed at Singleton Environment Centre but sadly did not win. Due to the pandemic the Pop-Up Café had to be cancelled but we hope it will return in the next year.

The Team

The team continued with their excellent work throughout the year. The parish stewards were able to continue with their work as they mainly work outdoors. The new mower has been tested and the stewards started to cut grass at parish council owned land, including Cuckoo Park and the field by Singleton Village Hall. Apart from grass cutting and the general maintenance in the parish the stewards regularly litter pick and maintain overgrown vegetation in parts of the parish. Cuckoo Park is part of the parish steward's maintenance schedule too and it keeps them very busy as the play park covers a large area with many pieces of equipment. If you see them out and about make sure you say hi, or let them know if there are any issues.

Paula has been settling in well and since joining us has successfully completed the Certificate in Local Council Administration qualification. This wasn't an easy task especially during the pandemic, and I would like to congratulate her for the fantastic achievement. Paula has also been working hard improving our communication channels and organising events, which I am sure many of you took part in.

Volunteers

During the height of the pandemic the community proved just how strong and supportive they are. Very quickly a support network was set up and residents helped those in need with shopping, prescription collection and supporting each other at a very difficult time. It was heartwarming to see the number of volunteers stepping up in a very short time. It was a very emotional period of time and I can't thank the volunteers enough for all they have done during the pandemic. They are the unsung heroes of our community. Thank you!

Thank you

I would like to thank all the members of the Parish Council for their hard work during this very difficult past year. Every Councillor brings different skills and qualities that helps the council achieve its objectives. I would also like to thank the Borough and County councillors, the PCSO and other partners for their support. I would like to thank the team who is supporting the parish council's vision and continue to work hard and with dedication to make the parish a pleasant place to live and work.



Photos from left: new bin at Normandy Way, new noticeboard by Cuckoo Park, new path adjacent to Great Chart Primary School and new hedge planted on The Viewing Point.

Aniko Szocs

Parish Clerk & RFO

Cllr Bill Barrett



Dear Parish Council and residents,

This year has been anything but normal, and indeed the adjustment needed to continue to be a productive councillor has been difficult. Firstly, learning the full suite of on-line tools needed to keep getting work done was tough at the start. Second, the fact that site visits, and face to face meetings have only really begun again properly in the last few months has also made things difficult. And thirdly, accepting that work agreed will take longer than normal due to the pandemic isn't always easy to explain to residents when in their eyes they want it done at normal work rates. All that being said there have been some achievements in Singleton East over the last year I can report and that I am proud of.

Firstly, I have worked tirelessly with ABC officers and the Parish Council to begin to reduce the amount of fly tipping and Anti-Social Behaviour at the Ashford Community Woodland (ACW) , on the site above where the Singleton Environment Centre resides. The Parish Council very kindly gave £2500 towards the clearing of the overflowing ditch, and ABC contributed the rest, including the cost of removing the fly tipped waste. This has meant we now have ditch cleared to a depth of 1metre deep to try to prevent motorcycles and Quad Bikes from accessing the field and causing damage to the grasslands.

Added to this effort to prevent vehicular access, KCC Public Right of Way (PROW) officers have installed a set of steps at one of the entrances, which obviously makes it more difficult to ride or drive a motorised vehicle up. And I have contributed £1500 towards a new metal gate to be installed at the entrance point with Chart Road from the ACW, which again will hopefully help to stop unauthorised access.

One final point on the ACW was the large amount of fly tipped waste on a small section of land owned by KCC on the other side of Bucksford Lane/Mock Lane, which had been used as an illegal tipping ground for many, many years. In the early part of the spring this year KCC attended and cleared all the waste and put up large concrete blocks to prevent access to the site again. This has already made a difference with flora and fauna returning and I am glad that I pushed this issue very strongly as leaving that area as a dumping ground just was not an option for me.

In other areas I have continued to liaise with Kent Police and our PCSO Catherine Stevens on a variety of topics. Namely the Singleton Centre and small-scale Anti Social Behaviour in the evening times. The refurbishments and the fact there is now CCTV in a hub at the centre should help moving forwards, but we will have to wait until the refurbishments are finished. Myself and the Parish Council are in a dialogue with the centre managers and will continue to try to improve the facility for everyone.

Finally, in regards Singleton Lake the Public Space Protection Order (PSPO) continued to work throughout the pandemic, with a few more fines being given out by Kent Police for people breaking

the rules. I have had meetings with officers from ABC, and have sought to get work moving to improve the car park, repair and enhance the car park bridge which is now in urgent need of replacing, and to widen the paths around the lake where the grass has encroached. All in all Singleton Lake is a much nicer place to visit and live around than it was in late 2015 when I first became councillor for Singleton.

I want to wish everyone a lovely summer and let's hope by late July things have returned fully to normal and the pandemic is largely behind us.

Regards

Cllr Bill Barrett.

e:Bill.barrett@ashford.gov.uk

Bill Barrett

Singleton West Ward

Cllr Kalysha Howard-Smith



Dear Residents,

The past year has been incredibly unpredictable and turbulent for all; it was great to hear from more residents as you ventured around the local areas, and explored what Ashford had to offer as we came in and out of lockdown.

Some issues were brought to my attention; litter and the environment being the most common, as well as flyposting and dog mess. I am working closely with officers and the relevant portfolio holders within the Council to ensure that Singleton West is well looked-after in these areas.

Furthermore, I have secured some time with the Chief Executive of the Council to walk around the ward and discuss your issues in person.

In last 12 months I have been very pleased to support several local projects using my Community Members Grant, including Singleton Environment Centre, Revelation, GC&S Parish Council, Gateway Church Ashford, and SK8 Side.

As always, I am easily reachable by email (Kalysha.howardsmith@ashford.gov.uk). Do get in touch if you have any concerns or issues you'd like to bring to my attention.

Over the next year, I hope to hear from more residents and meet you at various community events as we start to come back together.

Thank you, take care.

e:Kalysha.howardsmith@ashford.gov.uk

Kalysha Howard-Smith

Singleton East Ward

Police Community Support Officer – Catherine Stevens

These last 12 months have continued to be dominated by the coronavirus. Irrespective of how challenging this has been, Kent Police has continued to work hard protecting and serving those that live here. As always, I am very grateful for all the support and assistance that I receive from the residents, the Great Chart with Singleton Parish Council and the borough and county councillors. It is heartening to see that people really do care about the communities in which they live and work.

Over the last year, I have been working in areas where there have been reports of nuisance vehicles and anti-social behaviour. These have included Singleton Lake / Buxford Meadow, the Singleton Environment Centre / Ashford Community Woodland and the Singleton Centre in Hoxton Close. I have been working with a number of representatives from Kent County Council, Ashford Borough Council and the Parish Council to try and resolve the issues that have been brought to my attention. As always, if you experience any anti-social behaviour or nuisance vehicles then please report it to Kent Police ideally using the online tool or live chat. There is also an Ashford Kent Police Twitter page **@KentPoliceAsh** that gives you updates of what is happening in the area. I do tweet when I am out and about, so you can see what I have been up to. I also produce a monthly newsletter which is available on the Great Chart with Singleton Parish Council website.

With the lifting of the coronavirus restrictions, community events such as the monthly Pop-up Café and bike marking will be able to take place once more. The dates of these will be advertised by the Parish Council. I am very much looking forward to participating in these again as they are a very good opportunity for community engagement. Please come along if you can.

Regardless of what the future holds, Kent Police will continue to be there when the public needs us.



Catherine Stevens PCSO 46059869

Community Safety Unit | Ashford Police Station | East Division

Great Chart Village Hall

Like all village and community halls Great Chart Village Hall has been affected by the lockdowns and restrictions due to corona virus. These have created problems for people and organisations that had the hall booked for regular activities, parties and weddings to name but a few. We are grateful for their understanding and look forward to welcoming them back in the near future.

The new extended kitchen should now be able to be used again and this has proved to be very popular with hirers requiring catering facilities for party bookings at the weekend, helping to maintain and increase the number of weekend bookings. This has had a beneficial effect of allowing the trustees to maintain very reasonable hiring fees for local community groups using the hall.

During the course of the enforced closure the trustees have been busy tackling maintenance and updating tasks to ensure the hall is welcoming when it returns to normal use. We took the opportunity to have the hall wood block flooring sanded and resealed, which normally puts the hall out of use for a week. It now looks magnificent and enhances the character of the hall. We have also had the rear room painted at long last, along with the main part of the hall below the dado line which again has had a rejuvenating effect to the cosmetic appearance of the hall.

We have taken notice of the sad state of the boundary fence on the car park side of the hall and intend to have this replaced with a good picket fence, making the grounds secure for children's parties. Quotes have been sought and the new fence should be completed before the summer.

Several double glazed window panels have been replaced during the course of the year, two appear to have been the victims of a catapult.

The new boiler has proved to be more efficient using less gas over the course of the year whilst heating the hall more evenly and providing hot water on demand, resulting in a £300 refund from British Gas this year whilst being left on a background setting during the lockdown to prevent a freezing of pipework and dampness in the hall.

The finances are looking secure, we are starting to be able to build up some reserves, as with any old building repairs tend to be more expensive to rectify. We have been fortunate to receive grants to maintain the hall throughout the pandemic to ensure it can continue to serve the community in future.

I would like to thank my fellow Trustees, the parish council and ABC, along with the local community for their continued support to allow this local village hall to be so successful.

Paul Tate Chairman GCVH

Great Chart Primary School

Annual report to the Parish Council May 2021 by Great Chart Primary School

What a strange year it has been for everyone but as a community I feel that we have really pulled together and supported each other extremely well. The challenges the school has faced, like all schools, since March 2020 have been phenomenal and for such a long time feeling like we were purely revolving around crisis management throughout this time.



However, as a school we have adapted and changed constantly reacting to restrictions and guidelines. Throughout all of this turmoil the children of Great Chart Primary School have adapted and demonstrated a very clear understanding of our school values: respect, responsibility, resilience, aspiration, independence and kindness. Overnight they had to adapt their routines and structure to homeschooling and remote learning, they had to avoid seeing and mixing with their friends and all of a sudden they had to learn without the support of the adults in school being by their side. Although this was a huge change for them the children engaged and worked really hard especially during the most recent lockdown. With children learning from home, our parents should be congratulated for the support they have given them. Many were also juggling their own careers whilst magically turning into teachers! They have done an incredible job in continuing the learning for the children and should be extremely proud of how they had to adapt and change their whole lives.



With remote learning, staff in school had to adapt the way they taught. Not only juggling teaching the children who were able to come to school but also teaching those at home. All of a sudden we had to adapt to teaching online: live lessons, recorded lessons, 'google meets' and so much more. This has been a huge learning curve for all of us but something everyone took part in to ensure we did the best we possibly could for our children. We also had to support remotely some of our most vulnerable families. Whilst some came to school, others we supported via google meets, food packages and food vouchers.

Now we are back at school, the challenges don't end. Although learning continued throughout all of the disruption of lockdowns, bubbles and individuals having to self isolate, we now have the massive task of recovery from all of this. Whilst many children have excelled, many children in our community have found learning from home extremely difficult and now face the uncertainty of being 'left behind'. This is a mammoth task and will not be achieved overnight. However, we are doing all we can to support children in their learning and more importantly their mental and physical well being.

The word 'bubbles' now has a whole new meaning to our children. They have not been able to mix for over a year which has now become the norm. We recently held an event for the Daily Mile where the whole school was on the field at the same time. The look of surprise on the faces of the children was amazing.

We are really hoping that the next school year will be 'normal' but with all the challenges we have faced there have been some real positives. I truly believe we have become a much stronger community and we have been given the opportunity to review the ways we organise and plan things. With every dark cloud, there's a silver lining.

Thank you to the children, staff, governors and parents of Great Chart Primary School. What an amazing team.

Wendy Pang
Headteacher- Great Chart Primary School

Singleton Giant

Over the past 12 months Flora has been pretty much kept shut away with the exception of coming out for the 8pm clap for carers and providing some relief by walking some of Imperial Way.

Other vents that were planned on attending were cancelled or she would be there entirely at her own expense which did not make any sense for us.

We have carried out some repair work to her frame and hands, with a bit more planned for her neck.

We cannot wait to get Flora out and about again to amaze, and possibly scare, the residents of Great Chart with Singleton, Ashford, Kent and the much wider community.

Peter Barker-Chair

Flora – The Singleton Giant Association



Singleton Environment Centre

For everyone, 2020 was a very difficult year and like so many, I am glad that it is over and we are able to look forward to the future with a little more optimism! When the initial lock-down came into effect at the end of March, we tried to stay open to offer fresh produce, but in the absence of any income from conference bookings, quickly realised this was not a sustainable option and we were reluctantly forced to close. Following this first period of lock-down and with all the necessary precautions in place, we were able to re-open in July and had a relatively successful summer being the final destination of the Singleton Trail and hosting the Parish Picnic.



And just when we all thought things were starting to get a little better along came a second wave and a second lock-down, forcing us to close again. The light on the horizon was the December transition to a tiered system, only to discover that Kent would be in tier three, the most restrictive, which meant our options to re-open were confined to just being able to offer a take-away service. We deliberated long and hard as to whether this would be viable but decided to take an optimistic approach and give it a go, including the reintroduction of the take-away Sunday Carvery. This proved to be very popular but was to end up being short lived as a new, more easily spread, strain of the virus appeared

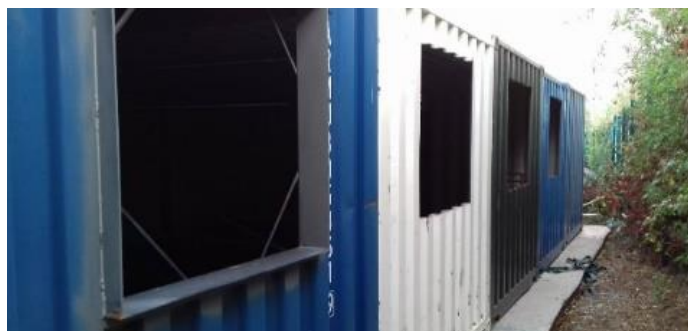


Photo showing Brisley Room before

and plunged us back into lockdown. As we moved into 2021, the trustees concluded that, for the time being, the Centre would remain closed considering that our commercial interests were secondary to the elimination of the virus. That paints a fairly grim view of the last year, but it hasn't all been bad.

Our big project in 2020 has been the construction of a two-storey extension opposite the existing workshops at the bottom of the site. This extension will provide a large, dividable space on the ground floor suitable for meetings, classes and small functions. Upstairs will be an education room, which will eventually offer live wildlife coverage from cameras across the site. Outside is a viewing platform which looks out over the nearby ancient woodland and recently planted addition to the new Chilmington green space. We've also been able to include an office for the Centre Manager, who has been using a cupboard in the main building as his office! The extension should be finished by the end of January and we will hold a grand opening once restrictions are lifted. There is some additional work to do installing solar panels, but this can be done while the extension is in use.

I would like to thank everyone involved in bringing this extension to fruition, particularly ABC Councillor for Roman ward, Heather Hayward and Parish Council chair, Ian McClintock. Working with ABC, we were also able to negotiate the replacement and re-siting of the car-park lighting which has improved safety. Let me also extend grateful thanks to the staff whose dedication has earned the Centre an enviable reputation in the local community and to the trustees, volunteers all, whose hard work guides the Centre's environmental mission.



Photo showing Brisley Room now

Malcolm Wiffen
Chair, Singleton Spaces

Great Chart & Godinton WI Group Annual Report

Obviously, we have all experienced throughout the past months and still are experiencing very strange times due to the Coronavirus Pandemic. Sadly, it has meant that since March 2020 we have not been able to meet as a group, experience the activities that we all love and enjoy, including collective Federation meetings; outings; our individual WI's monthly meetings and other interests. However, we have managed to keep in touch with many of our members using the wonders of technology, newsletters and phone calls.

Before our everyday lives were turned upside down, back at the end of 2019 and the start of 2020, we enjoyed our normal meetings and activities including the annual AGM in November

when we elected our officers and committee members for the coming year and ended the evening with an invigorating game of playing card bingo !! At our November activities evening we got into the Christmas spirit by making and decorating tinsel wreaths creating a sparkling display.

In December, our craft activities continued in the festive theme by decorating empty bottles and filling them with strings of little lights, once again making a fantastic display. We decided to go out for our festive celebrations, so suitably clad in Christmas jumpers, sparkly tops and jewellery we enjoyed a super meal at a local hostelry with lots of fun as members opened their Secret Santa gifts.

As our January activities evening fell very close to the New Year we decided not to hold one but instead to plan a trip to a local Pantomime which many members enjoyed immensely later in the month. At our main meeting in January we were given a most interesting and informative talk by the local Fire Service which led us all to think deeply about how we manage our households in relation to fire prevention.

February saw us having fun playing bingo and eating buns at our activities evening followed later in the month by a most amusing and interesting speaker entitled "Arty Gladys". We were enthralled with the talk on the history of 'Print' by a gentleman who had worked in newspaper print for many years and now created various forms of printing using 'Arty Gladys', an original wooden printing machine.

Early March, before lockdown at our activities evening we had great fun making chocolates using various moulds with different coloured and flavoured chocolate pebbles.

Then sadly lockdown happened and all our plans for our birthday meeting in March had to be cancelled, invites had been sent out to all WI's in the Kennington group to attend our "Irish Shenanigans night" but sadly not to be.

We had many other interesting and exciting speakers, activities, outings and events planned for the rest of the year but all had to be cancelled, hopefully as we go into 2021 we can begin to re-organise.

In the slight respite period between the two lockdowns and following strict Covid rules and regulations we did manage to resurrect our "Knit & Natter" sessions albeit in a member's garden and socially distanced. Then when the "Rule of 6" was introduced we held a few darts sessions with six members again bedecked in masks, significant amounts of hand sanitiser and very socially spaced but along with life in general that has all had to stop once again to fulfil the Government's Regulations to fight this horrendous virus.

We look forward to the day when normality can resume but in the meantime owing to the fact we are unable to hold an AGM in November 2020, our existing committee members and officers have agreed to continue until November 2021.

Janet Goodwin
Secretary
Great Chart & Godinton WI

Great Chart Cricket Club

This report is to provide Great Chart Parish Council with an update following the grants which were provided to Great Chart Cricket Club (GCCC) just prior to the Covid pandemic which has had a huge impact on everyone, not just GCCC.

It would not be an overstatement to say that the club was in quite a difficult position when the council kindly made the grants. The financial position of the club at the time was precarious and some difficult decisions would have been necessary to prevent the club running out of money. Even if said difficult decisions had been taken, had there been a failure with some of the critical infrastructure, it is possible that the club may not have survived.

The provision of the grants was such a relief and meant that the club could plan with certainty that funds were available, and actions put in place to provide long-term sustainability.

This position of financial stability also ensured that the club was not in financial difficulty at the start of the pandemic. Although operating costs were drastically reduced as we were forced to close during lockdown, there are still costs which cannot be avoided and which were being incurred at a time with no income.

The funds were used primarily to replace equipment which had either failed or was coming towards the end of its serviceable life.

The equipment included a new glass washer for the bar. The previous unit had failed and caused a lot of damage to the main area within the Pavilion. New heaters have been installed throughout the Pavilion which will hopefully help prevent frost damage, which is something the club experienced a couple of years ago and will also enable the club to be used during cold periods.

The new cooker which has been provided has made the provision of catering much more achievable than with the previous equipment as very little of it was in working

Finally, Wi-Fi has been installed which has helped not only in terms of the operation of the club but also is attractive to existing and potential new members as our lives seem to revolve around online technology.

The combination of the above has provided a new lease of life after what has been such a difficult time for everyone.

So, on behalf of everyone at GCCC, I would like to express our appreciation to the parish Council for the grants provided, which enabled our club to overcome a particularly difficult time and plan for the future.

Kind regards,

Nigel Champion
Chairman



order.



Great Chart Remembers

Sadly, our report makes for glum - and very short - reading. There were a whole series of commemorations planned for the year and all the following had to be removed, due to the Covid19 lockdowns and to encourage the maintenance of social distancing.

75th Anniversary of VE - 8th May

75th Anniversary of VJ Day - 15th August

80th Anniversary of the Battle of Britain Day - 15th September

Remembrance Sunday 8th November

70th Anniversary of the start of the War in Korea - 25th June

The RAF Cadets (305) Ashford Squadron wished to hold a wreath laying event for Battle of Britain Day and requested to use the War Memorial in Great Chart. This was not advertised to discourage a large gathering immediately before lockdown, but the event was beautifully performed by a suitably reduced contingent of Cadets. The event was supported by the Mayor of Ashford, Councillor Jessamy Blanford, The Chair of the PC and the secretary of RAF 5003 Squadron veterans, who's standard is laid up in St Mary's.



Future events

This year marks the centenary of the unveiling of the Great Chart War Memorial on 4th August 1921 (seven years to the day after the declaration of war in 1914) Subject to the unpredictable progress of the covid pandemic we are hoping to hold a commemoration on 4th August with an accompanying small exhibition and service in St Marys. Definite timing and dates are yet to be decided, as 4th August is a Wednesday and would prevent many being able to attend. Hopefully we will be able to return to a normal Remembrance Sunday - this year on 14th November. Sadly these dates cannot be certain, but are wholly dependent on the progress of the Covid 19 pandemic

Ian Wolverson

GREAT CHART REMEMBERS

Singleton Scout Group

Originally the 1st Singleton group was a satellite cub pack attached to 1st Great Chart Scout Group. As local demand grew, the District Team decided it should become an independent group and 1st Singleton Scout group was born starting with Cubs and then adding a beaver colony in April 2021, both meeting at the John Wesley School.

Throughout the pandemic the cub pack met weekly on zoom. Leaders worked hard to produce a varied program and the cubs were able to gain a variety of badges and awards despite the restrictions. As we were unable to ask for the usual amount of subs, the group struggled financially without any reserves to draw on, having only been in existence for 5 months when the lockdown started. The 1st Singleton group would like to thank the Parish Council for their grant which enabled the group to continue in these financially difficult times. Thankfully the cubs and beaver groups are nearly fully subscribed already and we look forward to getting the children involved in more and more activities as the restrictions lift.

Finance Report

Finance Officer's Report

The financial year 2020-2021 has been a productive year for the Parish Council. This short report will highlight some of the main achievements.

Over the past year the parish council has been working with Kent County Council on its Highway Improvement Plan. The plan contains all the wishes of the residents that would make an improvement to road and pavement alike. As part of this plan a 20 mph speed limit has been introduced starting from Hoxton Close along Running Foxes Lane to Cuckoo Lane. The Traffic Regulation Order has been financed by the parish council and will be implemented in the next few weeks. The parish council also held a couple of community events, but sadly most of the planned events had to be cancelled. This meant that funds allocated for those activities were unspent. The newsletter has seen a huge improvement and is now printed on A4 size on good quality paper which has slightly increased the cost, but fortunately with a few adverts some of the additional cost can be offset. The newsletter is printed 4000 copies an increase by 500 copies which has also impacted on the cost. The parish council received much positive feedback from residents about the new format of the newsletter and we are pleased that the additional cost is paying off. Over the past year the parish council held all its meetings online, which meant that the budget for venue hire remained the same. There were other budget lines, where due to the pandemic, the allocated funds remained unspent. Those funds will be carried over to the next financial year and will be spent on what they were originally allocated for.

The Parish Council continues to provide financial support to a number of local organisations and the established grants application procedure seems to work well, giving Councillors adequate information to assess each request without being too onerous for applicants to complete. A small contribution from each household provides a substantial 'pot' from which to support a variety of organisations and amenities within our community.

Independent Auditor's comment

The Parish Council accounts, and governing documents are reviewed annually by an internal auditor and an external auditor. The internal auditor's comments can be read below:

"Firstly, in going through the Minutes, I was pleased to note that the council had re-approved all the relevant documents (Standing Orders, Financial Regulations, Risk Assessments, policies etc). I am, once again, happy to confirm that in my view the council is being well run, and the that the accounts present a true and fair picture of the council's affairs and year-end situation.

Mike Cuerden
Independent Internal Auditor

Grants allocated in 2020-2021

The parish council was pleased to support the following groups with grants:

Organisation	Description	Amount
St Mary's in Great Chart	Grant for signs outside church	£ 170.00
Great Chart Cricket Club	Grant contribution towards Cooker, dishwasher and Electricity bill	£ 2275.25
Singleton Giant	Insurance renewal	£ 725.00
Great Chart Pre-School	Grant towards astro turf	£ 7,000.00
	Total:	£ 10,170.25

Earmarked and Reserved Funds

The parish council is responsible for the maintenance and upkeep of Cuckoo Park and Great Chart Play Park. These are an ongoing project. In the case of Cuckoo Park in addition to general maintenance, a fund for replacement of the equipment is required for when it reaches the end of its usable life (approx. 20 years). The parish council is also considering to replace the existing play equipment at Cuckoo Park as some has shown signs of wear. The "Yellow Land" funds refer to monies designated for the maintenance of The Viewpoint and land to the rear of Singleton Village Hall.

Cuckoo Park 10 yr maintenance fund	£36,599
Cuckoo Park 20 yr maintenance fund	£39,461
S106 Funds for Cuckoo Park	£118,000
Yellow Land s 106 funds	£42,332
Yellow Land Play Equipment	£20,000
Contingency reserves	£35,000
General reserve	£114,463
Parish Office	£10,000
Great Chart Play Park	£20,000

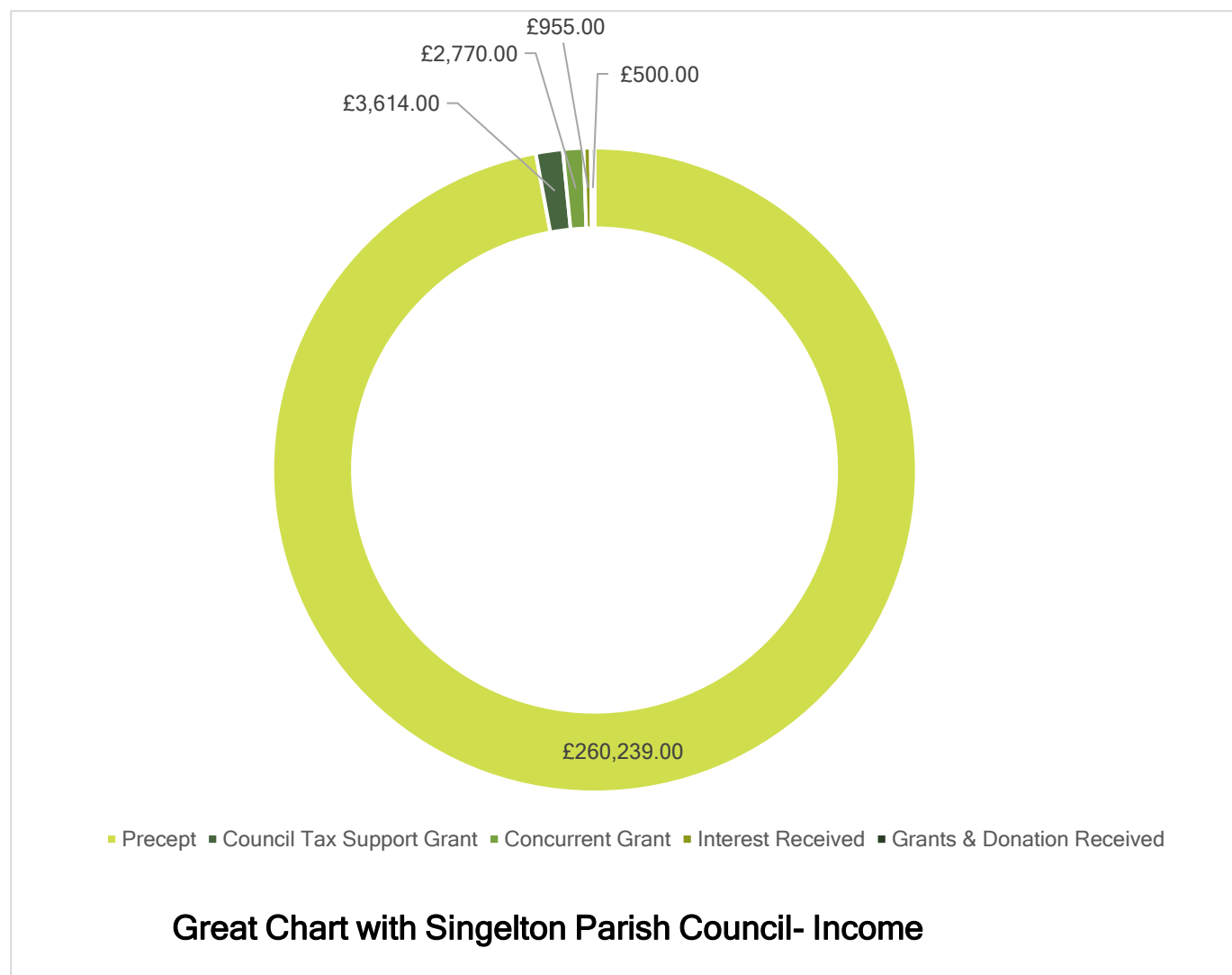
Total: £435,855

Year-end accounts

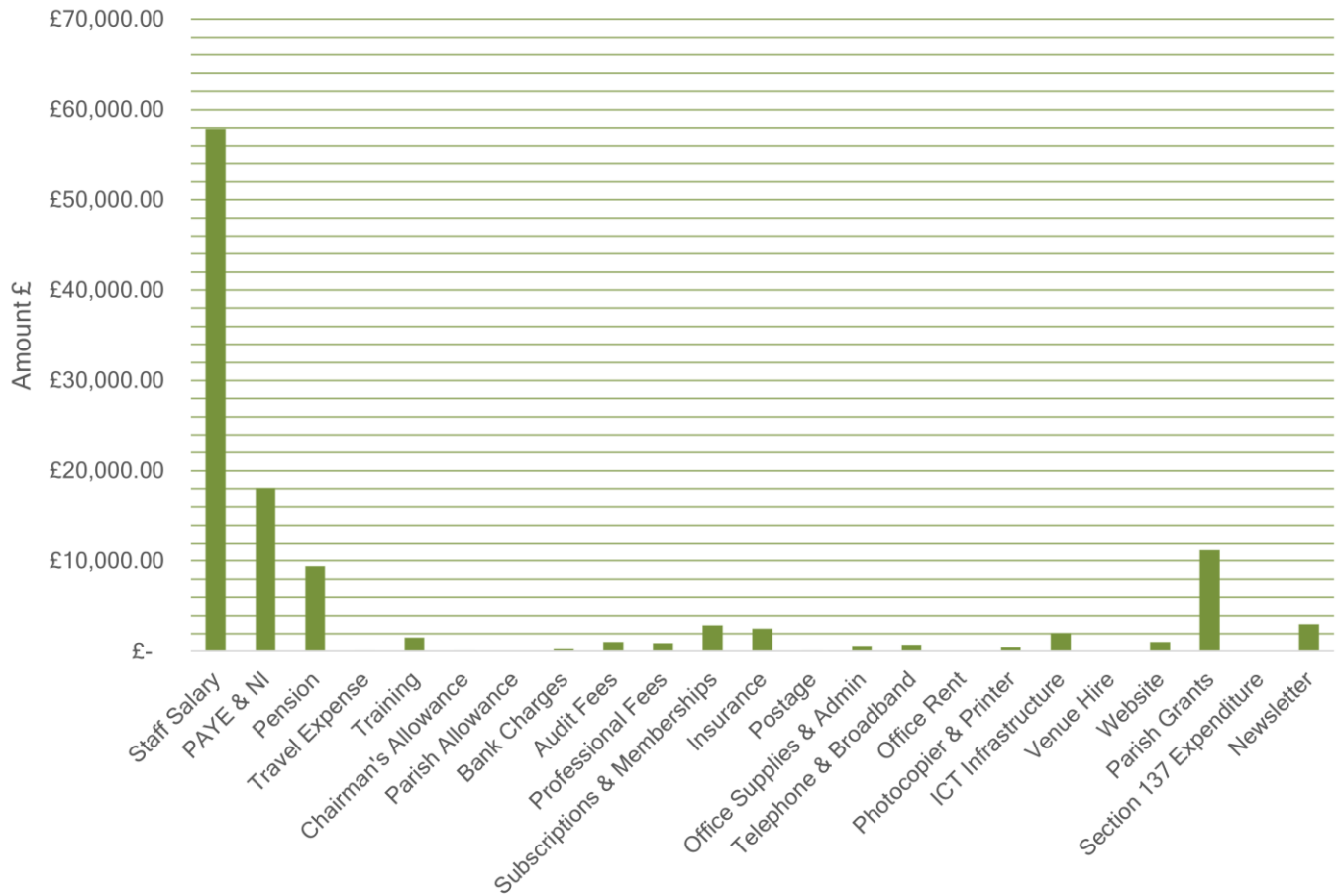
A copy of the year-end accounts for 2020-2021 will be posted to our website

www.greatchartsingleton-pc.gov.uk however, if you would like to find out more please contact us via theclerk@greatchartsingleton-pc.gov.uk

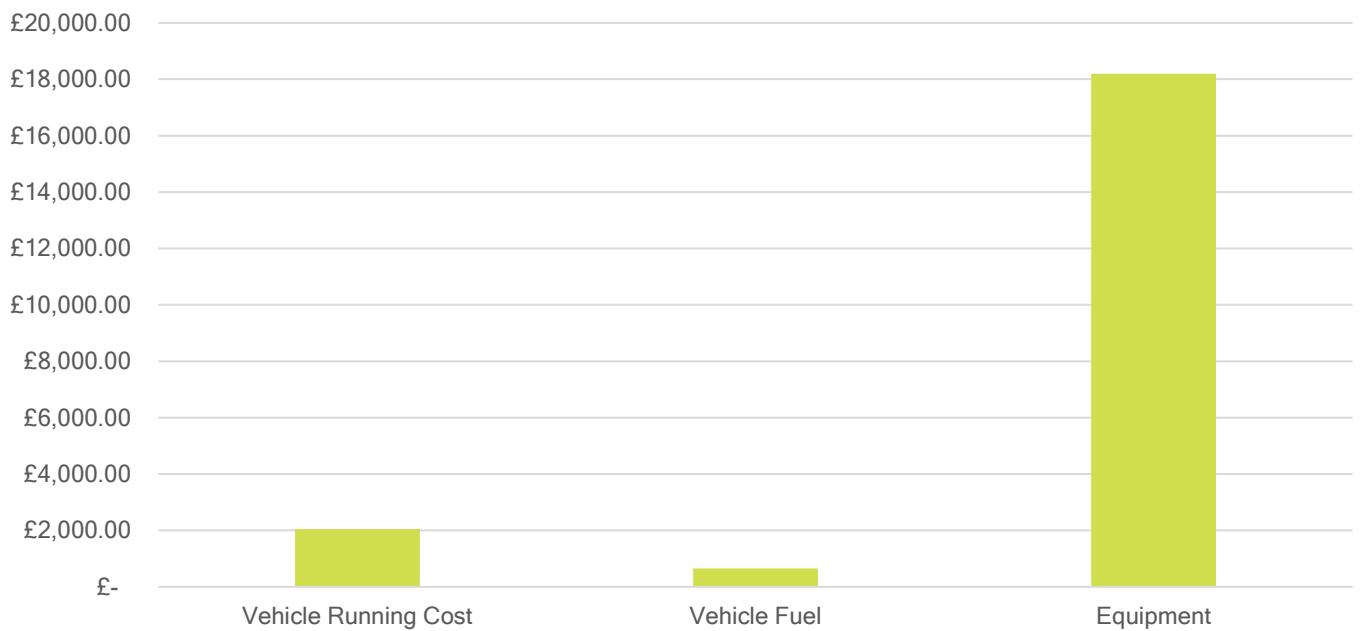
An income and expenditure summary follow here:



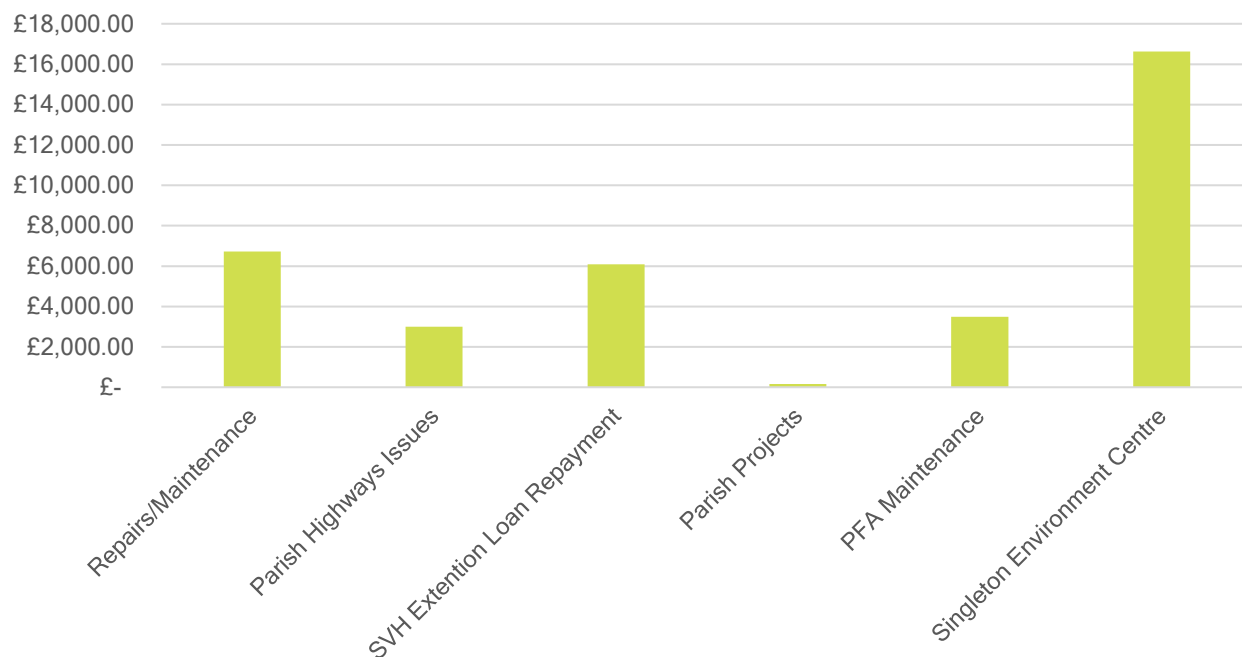
Expenditure-Administration



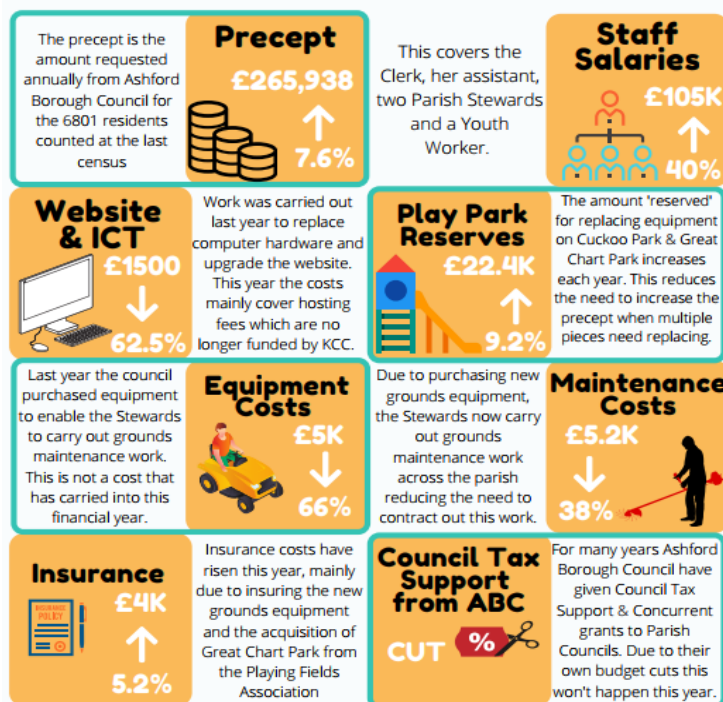
Expenditure - Ground Maintenance



Expenditure- Maintenance and Community Assets



Headlines from next year's budget



Great Chart with Singleton Parish Council

Contacts

Chilmington Ward

Cllr Ian McClintock



Tel: 07919 278828

Email: ian.mcclintock@greatchartsingleton-pc.gov.uk

Parish Council Chair also member of the following committees:

- Finance Committee
- Great Chart Playing Fields Association
- Chilmington Green Planning Working Group
- Singleton Spaces
- Complaints Committee

Great Chart with Singleton North Ward

Cllr Paul Tate



Tel: 07850 082023

Email: paul.tate@greatchartsingleton-pc.gov.uk

- Finance Committee
- Great Chart Village Hall – Chair
- Toke and Streeter Alms Houses Trust

Singleton East Ward

Cllr Katrina Alexander



Tel: 07791 632493

Email: katrina.alexander@greatchartsingleton-pc.gov.uk

- Staffing Committee

Cllr Janet Sullivan





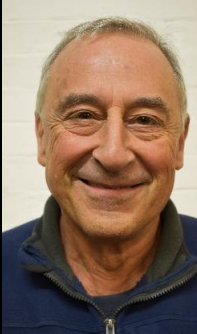
Tel: 01233 645400


Email: janet.sullivan@greatchartsingleton-pc.gov.uk


- Staffing Committee
- Chilmington Green Planning Working Group
- Great Chart Playing Fields Association – Chair

<p>Cllr Malcolm Wiffen</p> 	<p>Tel: 01233 635016</p> <p>Email: malcolm.wiffen@greatchartsingleton-pc.gov.uk</p> <p>Vice Chair of the Parish Council also member of:</p> <ul style="list-style-type: none"> • Finance Committee • Singleton Spaces- Chair • Chilmington Green Planning Working Group • Staffing Committee - Chair
<p>Cllr Kyran Wilford</p> 	<p>Tel: 07984 352008</p> <p>Email: kyran.wilford@greatchartsingleton-pc.gov.uk</p> <ul style="list-style-type: none"> • Pilgrims Football Club- Chief Operating Officer





Singleton West Ward

<p>Cllr Peter Barker</p> 	<p>Tel: 01233 610241</p> <p>Email: peter.barker@greatchartsingleton-pc.gov.uk</p> <ul style="list-style-type: none"> • Finance Committee • Amenities and Open Spaces Committee • Chilmington Green Planning Working Group
<p>Cllr Yolanda Barker</p> 	<p>Tel: 01233 610241</p> <p>Email: yolanda.barker@greatchartsingleton-pc.gov.uk</p> <ul style="list-style-type: none"> • Staffing Committee • Chilmington Green Planning Working Group – Chair • Complaints Committee • Great Chart Playing Fields Association
<p>Cllr Geoff Darvill</p> 	<p>Tel: 01233 642357</p> <p>Email: geoffrey.darvill@greatchartsingleton-pc.gov.uk</p> <ul style="list-style-type: none"> • Finance Committee • Singleton Village Hall – Chair

<p>Cllr Sally Gathern</p> 	<p>Tel: 07815 803862</p> <p>Email: sally.gathern@greatchartsingleton-pc.gov.uk</p> <ul style="list-style-type: none"> • Amenities and Open Spaces Committee • Complaints Committee
--	---

Washford Ward	
<p>Cllr Tom Ackrill</p> 	<p>Tel: 07780 470 668</p> <p>Email: thomas.ackrill@greatchartsingleton-pc.gov.uk</p> <ul style="list-style-type: none"> - Singleton Spaces - Trustee

Parish Council Staff Contact details

<p>Aniko Szocs</p> 	<p>Parish Clerk and Responsible Financial Officer</p> <p>Tel: 01233 616923</p> <p>Email: TheClerk@greatchartsingleton-pc.gov.uk</p>
<p>Paula Cowperthwaite</p> 	<p>Deputy Clerk</p> <p>Tel: 01233 616923</p> <p>Email: paula.cowperthwaite@greatchartsingleton-pc.gov.uk</p>
<p>Peter Walkden</p> 	<p>Robert Heath</p> 
Parish Stewards	Assistant Parish Stewards

Great Chart with Singleton Parish Council would like to thank its partners

Ashford Borough Council
Aspire
Kent County Council
Kent Police
Singleton Environment Centre
Singleton Spaces
Great Chart Village Hall
Singleton Village Hall
Great Chart Playing Fields
Ashford Community Woodland
Pilgrims Football Club
Chilmington CMO
Singleton Giant
Great Chart Primary School
John Wesley Primary School
Biffa
Ashford Volunteer Centre
WI Godinton and Great Chart
Great Chart Cricket Club
Great Chart Scouts, Beavers & Explorers
Barrow and Spade Brigade
Toke and Streeter Alms House Trust
Friends of Singleton Lake
St Mary's Great Chart and Singleton