

Hello,

FEBRUARY REPORT for Washford Farm, Park Farm North, Park Farm South, Kingsnorth, Roman Ward Bridgefield, Mersham, Sevington South and Finberry.

In my role as a PCSO I am either on foot or in a Police vehicle, engaging with the community and visiting those who need my help, assistance and reassurance.



Well this month has been extremely cold with all the snow that arrived. We are still in lockdown and please remember only to go out for essentials. The weather conditions can mean an increase in road traffic accidents.

If you are out and about on foot go carefully as we don't want any injuries or broken bones. So please stay indoors and stay safe, spring is not far away now.

Covid Breaches

Police are still getting plenty of reports of people breaking Covid regulations and each report is being dealt with by Officers. This includes small businesses trying to open, as well as gyms and hairdressers. We are giving out more and more Fixed Penalty Notices for anyone not sticking to the Covid regulations. This lockdown is hard on each one of us and we are all being affected in different ways. The more people who keep breaking these regulations and spreading Covid, the longer it is going to take to get out of lockdown.

Linnet Drive Finberry

There has been an attempted breaking in through the front door in Linnet Drive. No entry was made thankfully, but please stay vigilant and make sure your properties are as secure as you can make them. This includes ensuring you always keep front and back doors locked. There are simple things you can do to protect your property including, Investing in CCTV or Ring Doorbell, use a door chain, don't leave side windows open if you're not in that room. You can also obtain special timer switches that will bring your lightings on specific times, if you are out in the evenings or away from home.

Catapults

Again, reports of catapults, this time targeting farmers in Pound Lane Kingsnorth. One farmer had all the light bulbs in the barn shot out, presumably by catapults. The farmer then found a wounded lamb with a broken leg. Shortly after the farmer had dealt with the lamb and the light bulbs, he returned to the site and found more youths throwing rubble at sheep. This behaviour is totally unacceptable, especially targeting defenceless animals, not to mention the criminal damage. I have been patrolling the area as frequently as possible to give reassurance and to try to catch these youths.

Digital surgery – Join the conversation

Pose your questions to your local **PS Jazz Bloomfield** and **PCSO Anne Martin**

Tuesday 9 March, 1pm-2pm

For Washford, Park Farm North, Park Farm South, Kingsnorth Village & Bridgefield, Mersham, Sevington South with Finberry and Roman residents to raise any matters they wish to discuss via Microsoft Teams.

If you are interested in this virtual, video meeting then register your interest by emailing csu.ashford@kent.police.uk and you will be sent the joining link the day before.



Kent Police

Dispersal Order

On the Saturday 27th February and 28th February we have a dispersal order on to disrupt youths with catapults all over the area of South Ashford.

S.34 Anti-social Behaviour, Crime and Policing Act 2014 Dispersal power that is in place this weekend. It has been authorised by A/Insp 11922 REED due to the recent increase in incidents involving catapults in south Ashford.

- It is in place from 17:00hrs Friday 26/02/2021 until 17:00hrs 28/02/2021.
- It allows groups or persons to be dispersed from a defined area for up to 48 hours if causing or likely to cause harassment, alarm, or distress to members of the public in the area, or crime or disorder in the area. If they return without good reason (such as living or working within the area) they are liable to arrest and prosecution. Under this power police may also direct a person to surrender relevant items of property – such as catapults



Kent Police Ashford @kentpoliceash · 15h

...

#Pcso's have been patrolling in the area of #washfordfarm today, due to the freezing weather 🌨️ happy to see not many people around, please only go out if essential due to weather and #COVID19. am



2



7



Kent Police Ashford @kentpoliceash · 4 Feb

...

Officers from #Ashford Community Safety Unit have been supporting motorists to prevent catalytic converter thefts.

Full details here... kent.police.uk/news/kent/news...



1



21



Please call the Police immediately if you see anyone firing a catapult.

Romance Scam

How can you spot the signs?

You've struck up a relationship with someone online and they declare their love for you quite quickly.

They constantly make up excuses why they can't video chat or meet in person and they try and move your conversation off the platform that you met on.

They claim to be overseas, working in the military or medical profession. They might say they are abroad, carrying out vital work, including charity work. This helps them paint a picture of themselves as being heroic, trustworthy and reliable, and also gives them an excuse for the use of international dialling codes or poor internet connection.

When they ask for your help, it will be for a time critical emergency. The reason will be something emotive, which pulls at your heartstrings. They'll open up to you about a problem, or something that is worrying them to appear vulnerable and make you feel sorry for them. They may get defensive if you decline to help.

They tell you to keep your relationship private and insist that you don't discuss anything you talk about with your friends and family. This also includes the crisis they find themselves in that requires money. They will convince you this is part of the normal privacy that forms a healthy relationship.

4

How can you protect yourself?

Avoid giving away too many personal details when speaking online to someone you've never met in person, as it can lead to your identity being stolen. This includes revealing your full name, date of birth and home address - even if you're doing it for what seems to be harmless reasons, such as your partner wants to send you flowers or a gift.

Stay on the site's messaging service until you meet in person. Criminals want to quickly switch to other platforms that are less regulated and have better encryption, so there's no evidence of them asking you for money.

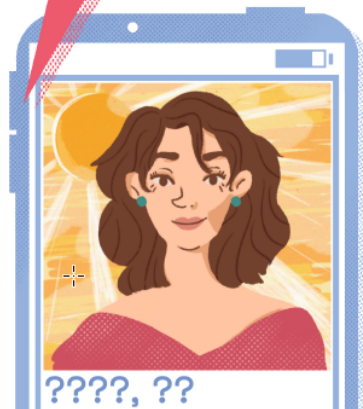
On social media, only accept friend requests from people you know and trust.

Most online platforms have a reporting tool which you can use if you suspect someone online is using pictures that don't belong to them, you are suspicious of their behaviour, or they have asked you for money. Reporting their user profile means it can be blocked which helps protect others.

If their pictures seem too perfect or doesn't match up with what they tell you about themselves, you can perform a reverse image search on Google to see if the photos have been taken from somewhere, or someone, else.

5

Fall for the person,



not the profile.



TO STOP FRAUD

ActionFraud

National Fraud & Cyber Crime Reporting Centre

actionfraud.police.uk

Kent Fraud Alert System



TO STOP FRAUD™

Council Tax Banding Scam

I have been contacted by a Kent resident informing me that they have been telephoned and informed by a fraudster that they were being called by them on behalf of their local council, as it been discovered that their property had been put into the wrong tax band of an E when it should have been in band D.

The fraudster stated their tax band will be reduced by approximately £200 per annum and that they were entitled to a refund of approximately £4,000 based on the time they had been resident in the property. However, they went onto state that they could sort this out for them but that there would be a charge of £160 plus VAT. When challenged they gave the name of a company and their company number, which when checked on companies' house relates to a company involved in the repair of communication equipment. This was identified by the intended victim as a scam and they disconnected the call.

Never assume or believe any caller is genuine. Your council would never employ a company like this to act on their behalf, so if unsure, it is important to contact your local Council and discuss this with them.

If you believe that you may have fallen victim to this type of scam, then please contact you Bank immediately and then report to Action Fraud as soon as possible by calling 0300 123 2040 or visiting www.actionfraud.police.uk

Preventing fraud

Together, let's stop scammers.



Remember, ABC:

 never Assume

 never Believe

 always Confirm

Get the latest scam advice: 
[@KentPoliceECU](https://twitter.com/KentPoliceECU)



**Kent
Police**

Contacting Kent Police

Report a non-urgent crime online www.kent.police.uk/report

Talk to us on LiveChat – available 24/7 www.kent.police.uk/contact

In an emergency, if crime is in progress or life is in danger call **999**

If deaf or speech impaired, text 'police' and your message to **60066**

www.kent.police.uk   

Please be aware of the below from the Kent Dog Lost team:

Be aware that there is a new ploy being undertaken by dog thieves. Having a white van with RSPCA stickers on and removing dogs from dog walking owners under the pretext that the dog matches the description of a stolen dog.

Never, let your dog be taken by anyone. Insist they follow you to the vets to have the dog scanned to prove ownership by the Chip. If they're not for real, they won't go with you! I have never known the RSPCA to operate in the way stated above.

Phone the Police at the first opportunity, with as much detail as possible and if at all possible take photos of the offenders and car registration. There are also reports, of these thieves door knocking in residential areas.

Suspect charged with burglaries in Ashford and Westgate-on-Sea

A suspect will appear in court charged in connection with burglaries in Ashford and Thanet.

Following an investigation by the Chief Constable's Crime Squad, Michael McDonagh, of Church Hill, Loughton, Essex was charged on Thursday 28 January 2021 with burgling a property in Guildford Avenue in Westgate on 12 October 2020, where designer bags and foreign currency were reported stolen.

The 19-year-old was charged with a second burglary offence, relating to an incident in Gordon Close, Ashford, on Saturday 10 October, when cash was stolen.

He was also charged with attempted burglary of a property in Torrington Road, Ashford on the same date.

Mr McDonagh currently remains in custody and is due to appear at Folkestone Magistrates' Court on Friday 29 January

Illegal use of mobile phones at the wheel – two week campaign

Motorists are being reminded about the dangers of using a mobile phone at the wheel as officers seek to reduce injuries and deaths on Kent's roads.

The advice is issued as officers start a two-week operation in support of a National Police Chiefs Council road safety campaign.

Between Monday 8 and Sunday 21 February 2021, officers from Kent Police's Roads Policing Unit will be targeting the minority of drivers who make calls and send texts when they should be paying attention to the road.

Patrols in marked and unmarked vehicles will also be testing for drivers under the influence of drink or drugs when they think an offence may have been committed.

Using a phone while driving is one of the offences dubbed the 'fatal four' as it is one of the biggest contributing factors to fatal and serious injury collisions. The other factors are speeding, failing to wear a seat belt and driving under the influence of alcohol or drugs.

Those stopped by patrols will be reminded that their behaviour makes them four times more likely to be involved in a collision.

Chief Inspector Elena Hall said: 'Most motorists comply with the law and our main aim is to educate the drivers of the risks posed by being distracted by mobile phones, including hands-free use, while in control of a vehicle.

'This includes being less aware of what is happening on the road around them, failing to maintain proper lane position and steady speed, and taking longer to brake and stop.

'All drivers need to take responsibility for their own actions. Using a handheld phone while driving is illegal. We are working to reduce collisions and casualties on our roads and everybody needs to play their part, concentrate, and drive safely

Police in Ashford provide support against catalytic converter thefts

Police in Ashford are taking steps to support vehicle owners at risk of catalytic converter theft.

Ashford Community Safety Unit has supplied permanent security-marking kits to several garages in the town, in an initiative which will allow mechanics to mark the catalytic converters of cars when they are brought in for a service.

If the engine part is then stolen, it will be harder for the thieves to sell on, and easier to locate, identify and return to the owners if it is recovered by police. The markings will also help identify and prosecute offenders.

Catalytic converters are found in the exhaust system of vehicles and reduce the output of toxic gases and pollutants. Criminals sometimes steal them because they aren't easily identifiable and can be sold on for the precious metals found inside them.

As well as the introduction of the kits, officers have been carrying out patrols in the district where thefts have been reported, as well as working with scrap metal dealers.

Ashford CSU Inspector Simon Johnson said: 'We appreciate how upsetting and inconvenient the theft of a catalytic converter can be when your vehicle is targeted by thieves, so within the Community Safety Unit we have been looking at actions we can take which will make things much harder for any opportunist thief.'

PCSO Laura Langridge, Ashford's crime prevention officer, said: 'We are grateful to the garages for working with us on this initiative.'

'We will be speaking to past victims of catalytic converter thefts to see if this is something they would be interested in, to hopefully prevent them from being targeted again.'

Vehicle owners interested in the kits must email the Community Safety Unit: csu.ashford@kent.police.uk.

Motorline Toyota, Motorline Peugeot and Kwikfit garages in the town have a supply of the kits.

Other measures can be taken to reduce the risk of theft:

- Contact your car's manufacturer, as some sell clamps and security cages that make catalytic converters more difficult to steal.
- Park your vehicle in a garage whenever possible.
- If you do not have a garage then park in a busy, well-lit area.
- Consider installing good quality CCTV cameras.

One stop

The One Stop Shop service has been set up again at Repton Community Hall with effect from 24th November operating from 9.30 to 11.30. Further information is that social distancing and PPE will be in place and all candidates will have to wear a face mask.

Further Support and Information can be obtained by contacting the following agencies-:

- Rising Sun Domestic Violence and Abuse Service – Confidential Helpline – 01227 452852. This line is available 9am – 5pm Monday to Friday.
- Freephone 24-hour National Domestic Violence Helpline run in partnership between Women's Aid and Refuge - 0808 2000 247 or the Men's' Advice Line on 0808 801 0327.
- Domestic Abuse Support Services in Kent and Medway - www.domesticabuseservices.org.uk

If you are in danger, please call 999 immediately.

Contacting Kent Police

-  Find your answer online. Browse our A to Z question finder www.kent.police.uk/askthepolice
-  Email your local policing team. Visit www.kent.police.uk/yourarea
-  For non-urgent issues, call **101**
-  In an emergency, if crime is in progress or life is in danger, call **999**
-  If deaf or speech impaired, text 'police' and your message to **60066**
-  Find us on Facebook
-  Follow us on Twitter [@kent_police](https://twitter.com/kent_police) or find your local account at www.kent.police.uk/yourarea
-  Follow us on Instagram [@kent_police](https://www.instagram.com/kent_police)

 **Kent Police** www.kent.police.uk



If you have coronavirus symptoms:

- High temperature
- A new, continuous cough
- A loss of, or change to, your sense of smell or taste.

Get a test now

Do not leave home for a least 10 days after the test

Wash Hands

Keep washing your hands regularly

Cover Face

Wear a face covering in enclosed spaces

Make Space

Stay at least 2 metres apart – or 1 metre with a face covering or other precautions.



COVID – 19 Information and Guidelines!

CORONAVIRUS – Due to new guidelines being announced by the government regularly with regards to COVID-19, please refer to their website for the most update to date information

at: <https://www.gov.uk/coronavirus>.

Further information Regarding COVID 19 guidelines can be found at:

<http://gov.uk/government/publications/face-coverings-when-to-wear-one-and-how-to-make-your-own/face-coverings-when-to-wear-one-and-how-to-make-your-own>

REPORTING CRIMES

Please can I remind the community to report crimes or information by the correct channels i.e. via 101, www.kent.police.uk - report a crime or tap the live chat button on this website. Or 999 if an emergency is happening here and now. Crimes are not to be reported to me via e-mail please as not always on duty.

Police do not monitor community Facebook, Twitter, neighbour next door apps etc...and these are not the correct way to report things going on, otherwise we are unaware and unable to help you in your community.

Public Meetings

All public meetings are now cancelled due to Covid-19.



Anne Martin 59654 PCSO
Community Safety Unit | Ashford Police Station | East Division